

# Inland **ENTERTAINMENT**

The Inland Empire's Guide to Fun

# REVIEW

November, 2004

**FREE**  
**\$150**  
IN COUPONS  
INSIDE

# Let There Be Lights!

Light festivals kick off  
the Holiday season in  
the Inland Empire

**"Grease"**

In Riverside

OUR COVER

*"Wildlights" and Santa at  
the Living Desert*



# KENWOOD FACTORY OUTLET

Supplies limited and model #'s & prices may vary SO HURRY IN SOON!

## FALL WAREHOUSE SALE

### HOME THEATER SYSTEM SPECIALS

**HTB506**

**RETAIL PRICE \$600<sup>00</sup>**  
**OUTLET PRICE \$399<sup>95</sup>**  
**SALE PRICE \$329<sup>95</sup>**

FACTORY NEW

- 100 Watts x 6
- Dolby Digital & DTS
- 3 video, 6 Audio Inputs
- 6 Speakers Plus 8" 150 watt Power Subwoofer

**HTB406**

**RETAIL PRICE \$500<sup>00</sup>**  
**OUTLET PRICE \$299<sup>95</sup>**  
**SALE PRICE \$249<sup>95</sup>**

FACTORY NEW

- 100 Watts x 6
- Dolby Digital & DTS
- 3 video, 6 Audio Inputs
- 5 Speakers Plus 8" Subwoofer

**MANAGERS SPECIAL**  
**VERY LIMITED QTY**

- 100 Watts x 5
- Dolby Digital & DTS
- 3 S-Video, 2 in/1 out
- 1 Optical, 2 Coaxial
- 5 Speakers Plus 8" Subwoofer

**HTB755DV**

**RETAIL PRICE \$700<sup>00</sup>**  
**OUTLET PRICE \$319<sup>97</sup>**  
**SALE PRICE \$279<sup>97</sup>**

FACTORY RECONDITIONED

### CD PLAYERS



**KDC-C667**

- 6 Disc CD Changer
- Disc Naming 100 Discs
- CD Text
- Plays CD-R/RW Discs
- Anti-Vibration Disc Transport

**RETAIL PRICE \$200<sup>00</sup>**  
**OUTLET PRICE \$159<sup>97</sup>**  
**SALE PRICE \$99<sup>97</sup>**

FACTORY RECONDITIONED

### CAR AUDIO



**KRC-509S**

**AM/FM CASSETTE**

- 45 Watts x 4
- CD/MD Changer Control
- Rear Preouts

**RETAIL PRICE \$150<sup>00</sup>**  
**OUTLET PRICE \$89<sup>97</sup>**  
**SALE PRICE \$59<sup>97</sup>**

FACTORY RECONDITIONED



**KDC-122**

**AM/FM/CD PLAYER**

- 45 Watts x 4
- CD, CD-R/RW Playback
- Rear Preouts

**RETAIL PRICE \$150<sup>00</sup>**  
**OUTLET PRICE \$94<sup>97</sup>**  
**SALE PRICE \$69<sup>97</sup>**

FACTORY RECONDITIONED



**KDC-519**

**AM/FM/CD PLAYER**

- 50 Watts x 4
- CD, CD-R/RW Playback
- Front Rear Preouts
- Remote Control
- Self Hiding Removable Faceplate

**RETAIL PRICE \$250<sup>00</sup>**  
**OUTLET PRICE \$159<sup>97</sup>**  
**SALE PRICE \$99<sup>97</sup>**

FACTORY RECONDITIONED



**KDC-X759**

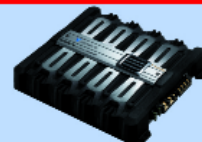
**AM/FM/CD PLAYER**

- 50 Watts x 4
- CD, CD-R/RW Playback
- Front, Rear, Nonfading Preouts
- 4.5V High Voltage Preamp Output
- System E's + Advanced Crossover System

**RETAIL PRICE \$450<sup>00</sup>**  
**OUTLET PRICE \$229<sup>97</sup>**  
**SALE PRICE \$149<sup>97</sup>**

FACTORY RECONDITIONED

### POWER AMPLIFIERS



**KAC-7201**

- 800 Watts Maximum Output Power
- Stereo, Mono, Tri-Mode
- Gold Plated RCA Inputs

**RETAIL PRICE \$250<sup>00</sup>**  
**OUTLET PRICE \$139<sup>97</sup>**  
**SALE PRICE \$99<sup>97</sup>**

FACTORY RECONDITIONED

### AUDIO RECEIVERS



**VR-606**

- 5.1 Dolby Digital & DTS
- 3 S-Video Inputs/Outputs
- 5 DSP Modes
- Remote Control

**RETAIL PRICE \$200<sup>00</sup>**  
**OUTLET PRICE \$159<sup>97</sup>**  
**SALE PRICE \$129<sup>97</sup>**

FACTORY RECONDITIONED

**Closeout Model**



**VR-707**

- 6.1 Surround Sound
- Dolby Digital & DTS
- 2 Coaxial, 1 Optical
- 2 S-Video, 3 Composite

**RETAIL PRICE \$300<sup>00</sup>**  
**OUTLET PRICE \$199<sup>95</sup>**  
**SALE PRICE \$169<sup>95</sup>**

FACTORY NEW

### DVD PLAYERS

**KENWOOD sovereign**

VERY LIMITED QTY



**DV5700**

**Sovereign 5 Disk DVD/CD/VCD Player**

- DCI Farquodja Progressive scan
- 24 Bit/192 KHZ Left & Right Channel D/A Converters

**RETAIL PRICE \$950<sup>00</sup>**  
**OUTLET PRICE \$499<sup>95</sup>**  
**SALE PRICE \$379<sup>95</sup>**

FACTORY NEW

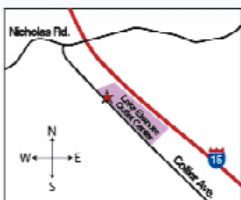


**DVF-3080S**

- Single Disc DVD Player
- Progressive Scan
- Plays WMA / MP3 / DVD / CD
- Plays Kodak Picture CDs

**RETAIL PRICE \$120<sup>00</sup>**  
**OUTLET PRICE \$109<sup>95</sup>**  
**SALE PRICE \$99<sup>95</sup>**

FACTORY NEW



Lake Elsinore Outlet Center

17600 Collier Ave.  
 #K196

14110 E. Firestone Blvd.  
 Santa Fe Springs



**Save BIG on all Accessories!**

COMPOSITE VIDEO • OPTICAL CABLE • S-VIDEO • COMPONENT VIDEO

Factory Closeouts. Very Limited Quantity. Shop Early For Best Selection. Limited To Stock On Hand.

**30%-70% OFF ORIGINAL RETAIL PRICING**

You must present this ad to get the lowest prices. Expires Nov. 30th, 2004.

VISIT US FOR ALL OF YOUR HOME AND CAR AUDIO NEEDS!

LAKE ELSINORE

SANTA FE SPRINGS

**2 Locations To Serve You!**

**951-245-5860**

**562-921-3431**

Some products are factory reconditioned & come with at least a 90-day manufacture warranty. Photos for illustration purposes only. All products are limited to stock on hand. Not responsible for typographical errors.

# *Alpine Slide* *at Magic Mountain*

Snow Play area Magic Carpet • Makes the return to the top EASY!

**Children FREE!**

(2-6 years old, with an adult)

For information call  
**(909) 866-4626**



**When it's cold enough, we make our own snow!**

Whether natural or man-made, you'll have a fun-packed day on our spacious snowplay hill.

Your **Alpine Slide** experience begins with a scenic chairlift ride above the beautiful Big Bear Lake. Then, with you controlling the speed, your toboggan plummets back down the mountain creating a thrill you'll want to relive again and again!

**Parents Pay only if they play!**

Parents...sun on our spacious deck while the kids play!

**Year-round family fun**

with 300 clear days a year!

**Go Carts • Video Games • Delicious Snack Bar**  
**2 hours from most Southern California cities; 3 hours from Las Vegas**

On Big Bear Blvd. • Big Bear Lake • 1/4 mile west of the village • Family Fun!

[www.alpineslidebigbear.com](http://www.alpineslidebigbear.com)

**Light it up!**



Every year, the Holidays seem to begin earlier and earlier. I think the reason for this is simple: people love the Christmas season! With Halloween out of the way, and Thanksgiving something of a seasonal prelude to festive times, the holly-jolly season can begin in earnest.

Unofficially, the Christmas season begins with lighting ceremonies, most of which begin at the end of November. Anything that can carry a few thousand light bulbs, from buildings to zoos, can gain a festive flare. If you love this Christmas tradition, we have a guide for you, starting on page 6, to help you find the lighting ceremony closest to home.

With all that Holiday cheer blazing, you'll probably want to go hunt for a tree. We've got your guide there too, on page 10.

From all of us here at the Inland Entertainment Review magazine, Happy Thanksgiving and joyous Holidays!

*Tom Pigeon, Editor*

**INDEX**

<b>Bring on the lights</b> . . . . .6	<b>Getting 'Funny' in Big Bear</b> . . . . .18
<b>Oh, Christmas tree!</b> . . . . .10	<b>Casino guide</b> . . . . .19
<b>Grease opens</b> . . . . .12	<b>Golf guide</b> . . . . .22
<b>Fun Holiday shopping</b> . . . . .13	<b>Party planning page</b> . . . . .24
<b>Mountain Holiday Jubilee</b> . . . . .14	<b>Kid stuff guide</b> . . . . .25
<b>Luxury paradise</b> . . . . .15	<b>What to do</b> . . . . .26
<b>Winter fun in Big Bear</b> . . . . .16	<b>Coupons</b> . . . . .30
<b>Remembering Pearl Harbor</b> . . . . .17	

Editor In Chief **Tom Pigeon**  
 Publisher **Word Mill Publishing**  
 Ad Manager **Shirlee Pigeon**  
 Advertising **Kim Falciani**  
**Dianna Adkins**  
**Andrea Christensen**  
 Distribution **Darrell Crowell**

[WWW.INLANDREVIEW.COM](http://WWW.INLANDREVIEW.COM)

Inland Entertainment Review is published monthly and can be found at more than 450 locations throughout the Inland Empire (Riverside and San Bernardino Counties), including Ralph's Supermarkets and Blockbuster Video stores. Inland Entertainment Review brings you the best in Inland Empire Entertainment.

Inland Entertainment Review is not responsible for incorrect pricing or information listed or for loss or damage of unsolicited materials. Opinions expressed by writers and advertisers are their own and do not necessarily represent those of the publisher. Redistribution in whole or in part is prohibited.

Copyright 2004 by Word Mill. All rights reserved.

**CONTACT US**

For mail correspondence,  
 or to send advertising materials:  
 Inland Entertainment Review, 5005 LaMart Dr. #204  
 Riverside, CA 92507  
 Advertising or Editorial inquiries (951) 686-7575  
 Fax (951) 686-0290  
 Email [IER@InlandReview.com](mailto:IER@InlandReview.com)  
 Website [www.InlandReview.com](http://www.InlandReview.com)



Word Mill Publishing, creating quality publications since 1992

**kinetic**

**CONVERSATIONS**

Riverside Community College  
**DANCE DEPARTMENT**

December 3 & 4, 2004  
 Landis Auditorium  
 Riverside City Campus  
 For tickets call: 951/222-8100

**SAWDUST ART FESTIVAL**  
**14 TH ANNUAL WINTER FANTASY**

**ART-CRAFTS-GIFTS**  
**SANTA-SNOW**  
**HOLIDAY ENTERTAINMENT**  
**THREE CAFES**

**FOUR WEEKENDS**  
 Open 10 AM - 6 PM  
 Nov. 20, 21  
 Nov. 26, 27 & 28  
 Dec. 4, 5  
 Dec. 11, 12

**SAWDUST ART FESTIVAL**

The Night Before Christmas' Painting by Kelly Akins

935 Laguna Canyon Road, Laguna Beach, CA 92651  
 949.494.3030 [www.SawdustArtFestival.org](http://www.SawdustArtFestival.org)

# Great Family Fun

## Apple Season Continues!



It's fun in the Glen!  
**At Oaktree Village**  
Open Every Day • 10am-5pm

Animal Park • Artisans & Crafters\*  
Train Rides\* • Pony Rides\*  
Mountain Town Museum • Reptile Cave  
Fishing • Petting Farm  
Shops & Restaurants

\* Weekends only

### Apple Annie's

Home of the ORIGINAL Mile High Apple Pie

**(909) 797-7371**

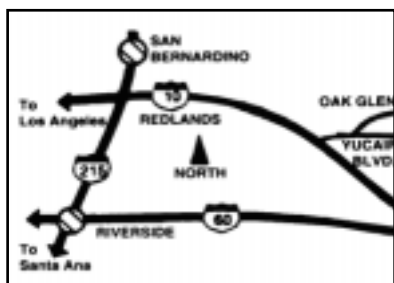
Located at Oaktree Village in Oak Glen



38480 Oak Glen Rd., Oak Glen, Calif.

**(909) 797-4020**

[oaktree-village.com](http://oaktree-village.com)  
[oaktreevillage@att.net](mailto:oaktreevillage@att.net)



### APPLE SEASON

Through November  
Fishing Contests  
Piglet Races  
Goat Milking  
Apple Cider  
Apples • Shows  
**AND MORE!**

# Holiday Celebrations



## Bring on the **LIGHTS!**

The holidays just wouldn't be the holidays without Christmas trees, carolers, and lights .... lots and lots of lights!

In fact, the bright glow of multi-colored lights are often the first sign that the Christmas season has begun: many of the Inland Empire light spectaculars begin in late November. That's why we devote this feature to showing you where to get your fill of lights!



*Photo by Michael J. Elderman*

*Riverside Festival of Lights' attendees enjoy a carriage ride beside the historic Mission Inn.*

### **Festival of Lights**

#### **DOWNTOWN RIVERSIDE**

One of the largest events in downtown Riverside is the Riverside Festival of Lights. Thousands of visitors come from near and far to view the millions of twinkling lights and holiday decorations atop the Historic Mission Inn Hotel, located in the heart of downtown Riverside.

The Riverside Festival of Lights Switch-On Ceremony kicks off the holiday festivities on **Friday, November 26**, at 6:15 pm. The event includes carolers and strolling performers, specialty vendors, and downtown Riverside stores open late for holiday shoppers.

The popularity and success of The Riverside Festival of Lights has grown

tremendously over the years. The initial half-million lights have grown to more than two million twinkling lights on the Mission Inn. In addition, decorations now include stars on the light poles on Mission Inn Avenue and miscellaneous lights and decorations on the Main Street Pedestrian Mall, managed by the Riverside Downtown Partnership. Attendance has also sky-rocketed from hundreds of spectators to an estimated 25,000 attendees each year.

New features of the Festival of Lights include net lighting on all the Mission Inn Avenue Pergola walkways and additional lights on the poles extending to the 91 Freeway.

The Festival of Lights continues with Downtown Aglow through January 8, 2005. Downtown Riverside remains aglow through the holiday season. Every weekend visitors can enjoy free live entertainment ranging from local choral groups to jazz quartets on the Main Street Pedestrian Mall hosted by the Riverside Downtown Partnership. In addition, carriage rides, holiday food, merchandise vendors and blocks of local shops and eateries are all centrally located in historic downtown Riverside.

For more information, call 951.781.5896 or visit [www.RiversideDowntown.org](http://www.RiversideDowntown.org).

### **Third Annual Tree Lighting Celebration**

#### **SAN BERNARDINO**

The National Orange Show Events Center is holding its Third Annual Holiday Tree Lighting Ceremony. The traditional ceremony will begin at 6pm, Sunday, **November 28**, with 25,000 lights around the NOS grounds and the spectacular 70-foot tree overlooking the Lagoon.

The festive atmosphere will include the sights and sounds of the holiday season. Local dignitaries and NOS personalities will be present to welcome the community. Live music from local churches and schools, hot cocoa, cookies, and candy canes all contribute to the Holiday atmosphere. Santa and his elves will also be on hand to entertain.

ChildHelp USA will sponsor the "Forest of Hope," the presentation of 20 decorated trees to lucky winners, as part of the evening's charitable events. This is the largest community tree-lighting event of its kind in the San Bernardino area.

The Third Annual Holiday Tree Lighting Ceremony will be held on Sunday, November 28, from 6pm to 8pm in the Lagoon area at the NOS Events Center. Enter Gate 9 off the 600 block of

### **Festival of Trees**

Each year, the Riverside County Regional Medical Center hosts its annual Festival of Trees event at the same time as the Festival of Lights Switch-On Ceremony in Riverside.

The Festival of Trees is held at the Riverside Convention Center, which is within walking distance from the Mission Inn. Dozens of decorated Christmas trees are on display, most with unique themes.

For more information, call (951) 358-7950.

# Bring on the Lights

South Arrowhead in San Bernardino. The event is free to the public. For additional information, call (909) 888-6788.

## Feast of Lights

### REDLANDS

The Feast of Lights is a traditional event at the University of Redlands, a service of worship that begins with representations of the season of Advent and celebrates the birth of the Messiah in spoken word, tableaux, song and instrumental offerings.

The 58th Annual Feast of Lights performances will take place Friday through Monday, **Dec. 3-6**, in the Memorial Chapel at the University of Redlands campus, 1200 E. Colton Ave. in Redlands.

For the 36th year, Professor Jeffrey Richard will direct the combined talents of over 160 choristers from the University Choir, the Community chorus of Redlands, the Chapel Singers, and the Madrigals. They will be accompanied by about 35 instrumentalists in the Festival Orchestra and on the Casavant pipe organ.

The celebration ends with a dramatic light display as the choir continues to

sing, exiting with individual lights onto the illuminated outdoor University Quadrangle.

Friday, Saturday and Monday performances begin at 8pm; the Sunday performance is a matinee at 4pm.

Tickets are on sale at the Campus Events office in the Hunsaker Center at the University of Redlands. Ticket prices range from \$10 to \$18. There is a limit of six tickets per patron. Campus Events can be reached at (909) 335-4046.

## Wildlights at the Living Desert

### PALM DESERT / INDIAN WELLS

The Berger Foundation's WildLights Holiday Festival at The Living Desert Zoo and Gardens will open the yuletide season with a festive light display beginning Thanksgiving weekend, **November 26, 27, and 28**, from 6pm to 8:30pm. This event, in its 12th season, is presented by the City of Indian Wells and runs through January 2, 2005.

The Living Desert is a 1,200 acre private, non-profit zoological park and



In addition to the Wildlights event and zoo attractions, the Living Desert also hosts an LGB model train exhibit.

botanical garden that aims to educate the public in an enjoyable way about the delicate balance of life found in desert ecosystems around the world.

More than 260,000 twinkling lights illuminate the park after dark, turning the desert into a holiday winter wonderland. North American and African animals as well as traditional holiday scenes are depicted in lighted displays. This year there will be many new animated scenes

**MURRIETA**  
D A Y S P A

## The Escape Package

European Facial  
Swedish Massage  
Spa Pedicure  
Body Glow  
Lunch  
**\$249**

Gift Certificates  
delivered by mail, fax, E-mail

Nuzzled in the foothills of Old Towne Murrieta  
41885 Ivy Street, Murrieta • 951.677.8111

ww.murrieta-day-spa.com

## Musical Holiday Memories

Sunday December 19, 2004  
3:00 pm

Celebrate the season with a blend of Mozart masterpieces and Holiday Classics. You may also sing along with the San Bernardino Symphony and the CSUSB Symphonic Choir during selections from Handel's Messiah.

W.A. Mozart Ave Verum Corpus, k 618  
W.A. Mozart Piano Concerto no. 21, k 467

George F. Handel Selections from the Messiah  
With the CSUSB Symphonic Choir

Mozart wrote his Ave Verum Corpus, late in life, as he returned to devotional compositions. His Piano Concerto no. 21 is among the most technically demanding of all of Mozart's concerti. In fact, the composer's own father, Leopold Mozart, described the Concerto no. 21 as "astonishingly difficult". Finally, you will have the opportunity to raise your own voice, with those of the Chorus and accompanied by the San Bernardino Symphony Orchestra, in a traditional Christmas sing-along to Handel's Messiah. This special holiday concert should not be missed!

**The San Bernardino Symphony**  
California Theatre of Performing Arts • 562 W. Fourth St. • San Bernardino  
Full season and individual concert tickets available. Call 909.381.5388 for information.

and the return of the ever-popular giant red teddy bear and tunnel of lights. Extra acreage has been added for touring pleasure with lots of other desert plant and animal displays all glowing with thousands of holiday lights.

Highlighting the event will be a nightly visit by Santa who will hear those special holiday wishes. Santa's Corner has been enhanced with a backdrop to take photos.

The popular LGB model train exhibits will run decked out in holiday splendor. This year the exhibits have been expanded with well over a mile of track, including the world's longest wooden model train trestle that extends over 200 feet. The new Rocky Mountains exhibit is open with a waterfall and suspended bridge. Seven trains run through rural communities and farms, Native American pueblos, logging and mining towns, the Grand Canyon and a European Alpine Village with bullet trains and cable cars. There is even a replica of the historical Coachella Valley Indio Rail Depot.

WildLife at WildLights, a nighttime version of the popular Wildlife Wonders live animal show, has a new show this

season that will occur every evening at 6:30pm in the park's Tennynt Amphitheater. These informative shows highlight animals from the world's deserts.

Cozy, wood-burning fireplaces, hot apple cider, hot chocolate, barbecued hot dogs and hamburgers and many other treats are available on the Palm Garden Patio.

Special entertainment will open the event during Thanksgiving weekend beginning at 7pm. Bob and Donna, an interactive musical duo, will play a wide variety of contemporary music (keyboard and sax combo) while involving the audience with props and interactive comedy. They will appear on Friday, November 26 and again on Sunday, November 28.

On Saturday, November 27, entertainment will be provided by the Evaros, a high energy, variety dance band with music that spans from the 50's to the present.

Other nightly entertainment will be provided by favorites Magic Mike, Judy Lunn, Mariachi Foundation of the Desert and the ever popular Barking Pupfish

along with local school choirs, bands and ensembles.

Visit the Plaza Gift Shop for a selection of holiday gifts. All purchases help to support the care and feeding of over 400 animals that call The Living Desert home.

This year WildLights will have a collection barrel for toys to benefit the Marines Toys for Tots Foundation program. To contribute, bring a new, unwrapped toy to brighten a child's holiday season.

WildLights admission is \$6.75 adults, \$5.00 children (ages 3-12), Living Desert members \$5.50. Advance tickets may be purchased at the Admissions Booth during regular park hours, 9am to 4pm.

WildLights is open the following nights: November 26, 27, 28 (Friday, Saturday, Sunday); December 3, 4, 5 (Friday, Saturday, Sunday); December 10-23 (Dark Christmas Eve and Christmas Day); December 26-Jan. 2 (3rd Annual Karaoke Contest Night Date TBA).

The Living Desert is located south of State Highway 111 at 47-900 Portola Avenue, Palm Desert. Call 760-346-5694 for additional information or visit their website at [www.livingdesert.org](http://www.livingdesert.org).

## HERITAGE FESTIVAL

Nov. 26, 27 & 28 2004



**FEATURING**  
Cowboy Poets  
The Lost Canyon Rangers  
Ernie Sites  
Kowboy Kal  
Mike Moroff  
Line Dancing by KC Douglas  
Living History Displays

Start your Christmas shopping early at Calico. Calico's annual Christmas Bear Promotion will start during Heritage Festival.

Camping still available!

## CALICO GHOST TOWN

1-800-TO Calico

[www.Calicotown.com](http://www.Calicotown.com)

Sinfonia Mexicana

Nati Cano's

# Fiesta Navidad

A Musical Celebration of Christmas

Featuring

Mariachi Los Camperos de Nati Cano

Ballet Folklorico Ollin

THE SUN Saturday, December 18, 2004 7:30 p.m. tickets from \$22 to \$40.

California Theatre of Performing Arts 562 West 4th Street in San Bernardino, CA  
For Tickets call the Sinfonia Mexicana office at (909) 884-3228 (Toll Free) 1 (866) 687-4284  
Sinfonia Mexicana is located at Arts on 5th Street between "D" and "E" Street.

EDISON

HERITAGE FESTIVAL

## Newport Harbor Christmas Boat Parade

### NEWPORT BEACH

Mixing the beauty of holiday light spectaculars with the splendor of the ocean, the Newport Harbor Christmas Boat Parade is a unique light festival. The parade features as many as 150 boats and is hailed as one of the top ten holiday happenings in the nation by the New York Times.

This year marks the 96th year of the parade, which runs from **December 15th through 19th**.

As the Newport Harbor Christmas Boat Parade moves its way through the Newport Harbor, you can view the parade from almost any place on the shore free of cost. With thousands of people viewing the parade each evening, please allow extra time for travel and arrive as early as possible. All city parking lots will be open throughout the parade to accommodate viewers.

John Scarpa, credited with the cre-

ation of the annual Parade of Lights, came to Newport Harbor in 1907 from Venice, Italy where he was a singing gondolier. He thought it would be a grand idea to reproduce Italy's Venetian Illuminated Night Water Parade that for seven centuries has glowed along the Grand Canal in Venice. He began the tradition of lighting boats by taking a group of visitors from Pasadena across the bay in a gondola decorated with Japanese lanterns. One year later, on July 4th 1908, the first lighted boat parade took place. Scarpa, along with his fellow small boat operators, put together a loosely organized affair consisting of nine vessels.

The second effort took place in 1913, then called the Illuminated Water Parade, when townspeople staged another water spectacular: vessels were fashioned in the manner of the Rose Parade. The boats were judged and prizes for the best lighted vessels were given.

World War I erupted and a severe depression hit Newport Harbor. It was not until 1919 that Joseph Beek, a pioneer in developing the Newport area,

came to rescue the lighted boat parade. And so began the tradition without interruption until December 7th, 1941. With the bombing of Pearl Harbor, Newport Harbor was closed to all unauthorized craft for the duration of World War II.

The end of the war brought the enthusiasm for the parade back with a flourish. The Newport Harbor Jaycees spearheaded the revival, and soon the holiday tradition began in earnest. A barge was commissioned to cruise the harbor, complete with a giant lighted Christmas tree, and carols were sung by the Jaycees, city employees, and their families. In the late 60's the Commodore's Club of the Newport Harbor Area Chamber of Commerce began the sponsorship of the "Parade of Lights" and it continues in much the same form today.

For information about joining the parade on a boat, call Davey's Locker at (949) 673-1434. For parade information, go online to [www.christmasboatparade.com](http://www.christmasboatparade.com) or call the Newport Beach Chamber of Commerce at (949) 729-4400. **R**

**\$38-\$56**  
Some tickets include a PRESHOW BUFFET

10TH ANNUAL  
**welk** musical  
Christmas

Yuletide cheer fills the air throughout the Welk Resort special...

Starring: Anacani • Mary Lou Metzger • Big Tiny Little

CALL THE BOX OFFICE NOW TO GET YOUR TICKETS!  
**1.888.802.7469**

PLAYING THROUGH  
**2004**  
Nov 11th - Dec 31st

3880 Lawrence Welk Drive  
Escondido, CA 92026  
[www.welkresort.com](http://www.welkresort.com)

**THE LIVING DESERT**  
ZOO & GARDENS

Discover... native & exotic animals, beautiful gardens, scenic trails and something new for the family every time you visit! • Wildlife Wonders Animal Shows • LGB model trains • Gift shops, nursery & cafés • African Village WaTuTu

**THE BERGER FOUNDATION'S WildLights** Holiday Festival  
PRESENTED BY THE CITY OF INDIAN WELLS  
Nov. 26 - Jan. 2\*, 6-8:30pm  
(\*Some restrictions apply)

**THE LIVING DESERT**  
ZOO & GARDENS  
Palm Desert/Indian Wells  
47-900 Portola Ave., Palm Desert  
**760-346-5694**  
[www.livingdesert.org](http://www.livingdesert.org)  
A NONPROFIT ORGANIZATION

# Oh, Christmas Tree!

*A guide to Inland Empire tree farms*



**I**t's time to break the ornament box out of the garage and put up the tree. If you're the type who loves the smell of a real, living tree, and enjoy the fun of getting it yourself, then a Christmas tree farm is for you. Not only do trees freshly cut last longer, but the experience itself can be a load of fun for kids.

Depending on where you live, there is likely a farm near you.



*The Live Oak gift tent offers variety.*

## LIVE OAK CANYON

Yucaipa • (909) 795-8733

If you've been here to get your pumpkin during Halloween, then you already know how good Live Oak Canyon is as a family treat. Kids will enjoy not only picking out and cutting down a tree, but the farm also hosts a wide array of activities, including bouncers, pony rides, and more. There is also food and entertainment, making Live Oak Canyon a great afternoon outing.

## THE GROVE AT TALAMASCA FARMS

Murrieta • (951) 677-3322

Cut your tree fresh or get one already cut for you. The farm also features holiday decorations.



# Fresh Christmas Trees

*The Christmas Tree you want with an experience that will become a tradition*

## Family Fun

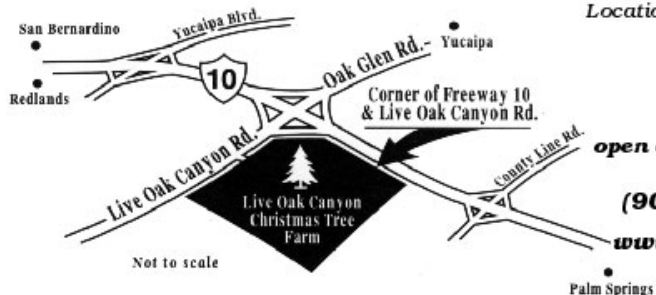
Petting Zoo • Pony Rides • Picnic Area • Slides  
Bounces • Quad Rides • Giant Hay Castle

## Freshest Trees on the West Coast

Our Noble and Grand Fir Trees ranked 1st in moisture (freshness) in a test by Washington State University, Dec. 2002, which tested dozens of Christmas Tree retailers on the West coast

Our Farm Grown Monterey Pine, Aleppo Pine, Sierra Redwood and Leyland Cypress are available to reserve or cut fresh at your convenience

*The Inland Empire's Favorite Christmas Tree Location For Over 20 years!*



### Hours

**7 days a week  
9am to 5pm**

**open evenings Nov. 27 - Dec 12**

**until 8:00 pm**

**(909) 795-TREE (8733)**

**[www.liveoakcanyon.com](http://www.liveoakcanyon.com)**

See coupon on page 30

## Largest Selection

Thousands of Trees • 7 Varieties  
All sizes • Choose and Cut  
Pre Cut • Potted Trees

## Christmas Store

Tree Decorations • Lights  
Stands • Home Decorations  
Gifts • Fresh and Artificial  
Wreaths and Garlands

## Award Winning Quality

Our Farm has won multiple 1st place awards for the high quality Christmas Trees that we grow

# Tips for caring for a real tree



## SAND HAVEN PINES

Woodcrest/Riverside/Perris • (951) 789-8450

Sand Haven offers fresh trees, plus, on the weekends, you can find an active craft fair.

## CHRISTMAS CONIFERS

Colton • (909) 824-6489

Offering a wide selection of more than 2,000 trees to choose from.

## PERRING FAMILY FARM

Riverside • (951) 522-9529

Carries a wide range of sizes, and prices, of trees. Includes a play area for kids.

## THE WICKERD FARM

Menifee • (951) 286-8289

Only one mile from the 215, Wickerd Farm offers a wide range of trees, crafts, petting zoo and hay rides.

*Not only are real trees fun to cut down, but they tend to last longer than pre-cut trees, especially when cared for.*

- Select the freshest tree by gently shaking it, very few needles should fall off.
- Store the tree in water, away from the sun and wind, until ready to put up.
- Cut about a half-inch off the bottom of the tree before installing the stand.
- Keep the stand full of water at all times.
- Don't add anything to the water. Plain tap water is fine.
- Keep the tree away from all heat sources, as these will quicken evaporation.

For more information, visit the National Christmas Tree Association online at [www.realchristmastrees.org](http://www.realchristmastrees.org)

## PERRING FAMILY CHRISTMAS TREE FARM

4785 Chicago (near UCR/Canyon Crest)

### Reserve, Choose and Cut

- Potted Trees • 2.5 Acres of Pine
- All Sizes-All Prices*



Opening Day: Friday Nov. 26, 9am-8pm  
After Nov. 26, open Mon-Fri 4pm-8pm, Sat-Sun 9am-8pm

Fireproofing, Delivery & Set-Up Available

Free Candy Canes and Hot Cider  
Playhouse and Tire Swing for the kids

**\$3.00 DISCOUNT WITH THIS AD.**

**(951) 522-9529**

## The Wickerd Farm

47 acres of Christmas trees and more!

### A Fun Family Experience

Early Christmas Tree reservations:

Nov. 20-21, 10am to 5pm

Farmers Market every Sunday, 9-2

Many Birds Pow Wow, Nov. 6-7



26852 Scott Rd., Menifee

**(951) 286-8289**

See coupon on page 30

## CHRISTMAS CONIFERS II

has a **TREE-Mendous** selection this year  
**2000 Monterey Pines to choose from**



Opens weekends of Nov. 13 -14, Nov. 20-21

Weekend hours: 9am to dark

Open daily thereafter

Starting Friday, Nov. 26, 9am

Weekday hours, 11am to dark

located on Reche Canyon Rd. & Westwood,  
under the powerlines, in Colton

**(909) 824-6489**

**For all your**

**Christmas tree needs!**

See coupon on page 30



Please join us for the Holidays  
Beginning December 1<sup>st</sup> 2004

• Live and Cut Christmas Trees

• Flocking

• Pine Goods, Wreaths and Poinsettias

• Santa with Petting Zoo

• Hot Chocolate & Cider

• 10% off with this Ad

Open Daily 11:00 am to 10:00 pm

Located at: 41541 Ivy Street

Corner of Ivy and Jefferson

Murrieta CA 92562

Phone 951-677-3222



## Seasons Greetings from Sand Haven Pines Christmas Tree Farm

Reservation Opening Nov. 20

Choose 'n' Cut Opening Dec. 1

Open daily (except Thanksgiving Day)

Sat.-Sun. 8-8

Sat. and Sun. 8-5

Weekdays 9-8

Weekdays 9-5

Santa will be here from 10-4 Dec. 4-5, 11-12

### COUPON

Good for **\$3 OFF** any tree

(not good with any other offer or tabletop trees)

Weekend Craft Fair

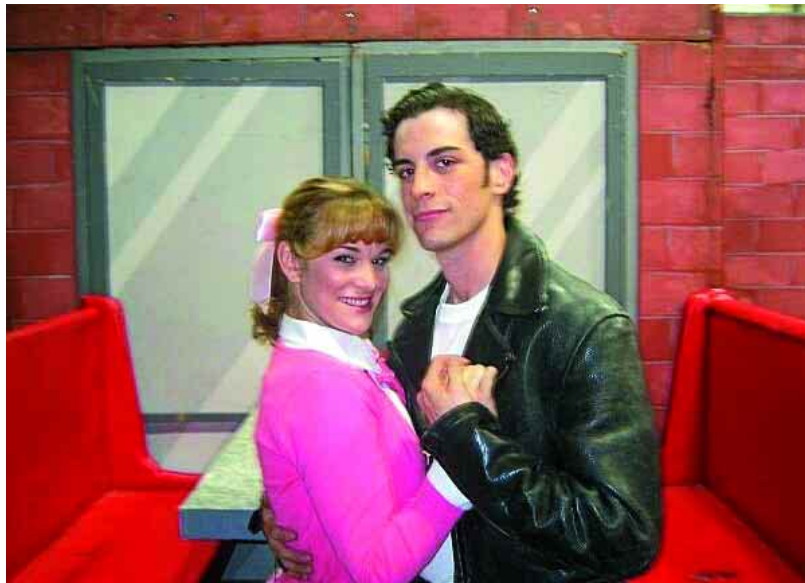
Free coffee and candy canes

Live container trees

**951-789-8450**

Wood Rd. & Cajaleo Rd., Riverside/Perris/Woodcrest areas

# 'Grease' is the word



*Sandy (Melissa Hoff) and Danny (Jeffrey Christopher Todd) reminisce about those "summer nights" in Performance Riverside's production of the 50's Rock-n-Roll musical, Grease, playing November 5-21 at Landis Auditorium. For ticket information call the Box Office at (951) 222-8100 or visit them on the web at [www.performanceriverside.org](http://www.performanceriverside.org).*

pers as "Greased Lightning," "Summer Nights" and "We Go Together," Grease broke the Broadway record for longest running musical in 1979 and the film starring John Travolta and Olivia Newton-John became highest-grossing movie musical of all time.

"It's good to remember a simpler time," says Performance Riverside's Executive Director and Producer Steven A. Glaudini. "And I'm excited to bring younger people in to experience live musical theatre productions."


## Performance Riverside opens 'Grease'

One of the all-time Broadway and movie musical sensations is coming to the Inland Empire as Performance Riverside opens Grease on November 5 in Landis Auditorium. Featuring a hit-laden score with such well-known showstop-

pers as "Greased Lightning," "Summer Nights" and "We Go Together," Grease broke the Broadway record for longest running musical in 1979 and the film starring John Travolta and Olivia Newton-John became highest-grossing movie musical of all time. "It's good to remember a simpler time," says Performance Riverside's Executive Director and Producer Steven A. Glaudini. "And I'm excited to bring younger people in to experience live musical theatre productions." Grease centers around the ultra-cool Danny Zuko, leader of the Burger Palace Boys, who falls for the beautiful new girl at school, Sandy. The familiar storyline, best known to most from the 1978 film, explodes into a non-stop party on stage. The production is directed and choreographed by John Vaughan, already known by Performance Riverside audiences for his party-like atmosphere on stage from last season's hit The Rocky Horror Show. His work also has included the classic beauty of such shows as Oliver! and Camelot.

Jeffrey Christopher Todd, who just moved from the East Coast two months ago, stars as Danny. His credits include Seymour in Little Shop of Horrors, Jesus in Godspell, the lead in Anyone But Me at the Blank Theatre, and an Off-Broadway production of Just Us Boys.

Starring as the innocent Sandy is Melissa Hoff, who appeared as Christine earlier this year in Performance Riverside's production of Phantom. She was also recently seen as Belle in Beauty and the Beast in San Bernardino, Emma in Jeekyll and Hyde at the Starlight Bowl, Marguerite in The Scarlet Pimpernel at Fullerton Civic Light Opera, and the cover for Anne/Fredrika in the Los Angeles Opera production of A Little Night Music at the Dorothy Chandler Pavilion.

Other cast members include Rocky Horror Show veterans Lindi Duesenberg as Frenchy and Renee Liskey as Cha Cha. 

may the universe conspire to make your every wish come true

**Kármína Palace**  
all suite • all inclusive resort  
manzanillo méxico

Like the magic of a deep blue Pacific dream, Kármína Palace's 324 luxurious suites, nestled amongst the tropical beauty of Manzanillo Mexico's Pacific Coast, will bring true pleasure to all the senses.

Our deluxe all inclusive services, come together in this magical combination of fun, leisure and rest.

Fly nonstop  
Alaska Airlines • Continental Airlines  
Manzanillo

For free information and reservations call:  
**1 877 KARMINA**  
[www.karminapalace.com](http://www.karminapalace.com)

**WHEN:** Nov. 5, 6, 12, 13, 19, 20 at 8pm;  
Nov. 7, 13, 21 at 2pm

**WHERE:** Landis Auditorium, 4800  
Magnolia Ave., Riverside

**TICKETS:** \$25, \$28, \$32

For more information, call (951) 222-8100  
[www.performanceriverside.com](http://www.performanceriverside.com)

# Fun holiday shopping

*Winter Fantasy offers a fun Holiday shopping alternative and unique gifts*



The Sawdust Art Festival's Winter Fantasy in Laguna Beach returns for its 14th annual run on Nov. 20. The focus of this nine-day fine arts and crafts show is, of course, the 173 artists from around the west coast who converge at the beautiful Sawdust Art Festival grounds to create one of the Southland's most spectacular holiday events. The original works of art created by the artists include jewelry, paintings, printmaking, ceramics, sculpture, clothing, handblown, fused, and stained glass, wood furniture and accessories, holiday ornaments, and much more.

Over 55,000 holiday lights will embellish the buildings, decks and 3-acre grounds of the Sawdust this year. More than 25 Christmas trees will be purchased and decorated for the event. Twelve trees will be decorated by community youth and art related groups. This will enhance the existing 21 eucalyptus trees and 15 other species of trees found at the Sawdust.

This year a special house



will be built for Santa in the center of the town square area along with a life-size gingerbread playhouse for kids, a 15-foot poinsettia tree, a 12-foot tree decorated by the Sawdust Festival board of directors and an 8-foot fountain designed and installed by Sawdust artist Larry Gill.

Santa tops the entertainment line-up appearing from 10:30am until 5pm each day at the festival. Two of Santa's elves, Rosie and Joe, will take time from their busy schedules to be at the festival on two days. Entertainment ranges from traditional holiday carolers to hand-bell choir, marionette performances, stilt-walking acrobats and everything in-between. **R**

**WHEN:** Nov. 20-21, 26-27, 28, Dec. 5-6, 11-12, 10am-6pm.

**WHERE:** Sawdust Art Festival, 935 Laguna Canyon Rd., Laguna Beach

**TICKETS:** Adult \$4.50 one-day, \$5.50 Season Pass; children 6-12 \$2, free for 5 and under.

For more information, call (949) 494-3030  
[www.SawdustArtFestival.org](http://www.SawdustArtFestival.org)

*Wake Up with Make-Up*

*Beauty & Simplicity at it's Finest!*

**American Beauty Permanent Make-Up**

- Lash enhancement, eyeliner (multi-color or black), shadow, eyebrows • Full lips/liner
- Beauty marks, areola, scarring & corrective procedures • Eyelash perm & tint

**17 Years' Experience!**

Please allow me the pleasure of a private Complimentary Consultation to help you enhance your natural appearance & look your best...

**Gift Certificates Available**

*Call Linda, L.E., C.D.T.*  
**951.687.7571**  
 4616 Pine St. Riverside (Tequesquite @ Brockton Ave.)

**NOVEMBER and DECEMBER**

**"Don't Miss" EVENTS!**

**November - Merchant Fall Sales Throughout the Center!**

**December - Annual Christmas Party**

**Sat. Dec. 11th 11:00-2:00**

- Free Pictures with Santa
- Free Candy Canes & "Gifts" for Children
- Free Children's "Make a Present" Craft Table
- Dickens' Carolers

**CANYON CREST TOWNE CENTRE**

5225 Canyon Crest Dr., Riverside  
 951-686-1222  
[www.canyoncresttownecentre.com](http://www.canyoncresttownecentre.com)

# High-altitude Shopping

*Mountain Holiday Jubilee kicks off at Big Bear Lake*

Let the shopping season begin. The 20th annual Mountain Holiday Jubilee traditionally kicks-off the holiday shopping season at Big Bear Lake. This year's arts and crafts show will take place November 26 - November 28.


The Mountain Holiday Jubilee offers a unique shopping experience featuring handmade and one-of-a-kind items. Sixty-five crafters and artists from throughout the Western United States

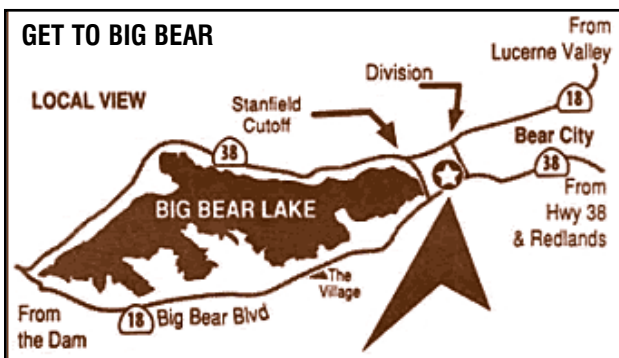
converge in Big Bear Lake for the holiday weekend. From wire-wrap gem jewelry, to hand-thrown pottery, to personalized ornaments, to homemade fudge there are crafts available for every taste and every budget.

Little shoppers looking to fulfill their gift lists can visit the Children's Santa Store and shop on their own. Santa's Store offers gift items priced from a quarter to \$5.00, perfect for those little shopping budgets. The store is open for persons aged 4 years to 12 years only, so parents, aunts and uncles can be surprised come Christmas morning.

In conjunction with this year's Jubilee, Bear Mountain Dog Rescue will host a dog adoption day on Saturday, November 27. All the dogs up for adoption have been res-

cued from the local shelter and are spayed, neutered and have their shots. For more details on Saturday's dog adoption day, log onto [www.bearmountain-dogrescue.com](http://www.bearmountain-dogrescue.com).

Other entertainment includes Big Bear's own Holiday Carolers - the BVD's. The Carolers will be appearing throughout the weekend to add a special touch of holiday cheer to the event. 



**WHEN:** Nov. 26-28, 10am to 5pm Fri. & Sat., 3pm Sun.

**WHERE:** Convention Center at Big Bear Lake, corner of Division Dr. & Big Bear Blvd.

**TICKETS:** \$3 adults, children under 12 free.

For more information, call (909) 585-3000  
[www.bigbearevents.com](http://www.bigbearevents.com)

## Why wait for the new year to start a new you?



Join Now  
Rest of Year  
**FREE**

Make an early resolution to join Curves. It's easy, fun and fast and just 30 minutes three times a week gets real results.

[www.curvesinternational.com](http://www.curvesinternational.com)

*Curves*

The power to amaze yourself.\*

### BLOOMINGTON

19059 Valley Blvd., #102, (909) 874-1023

### FONTANA

14451 Foothill Blvd., #105, (909) 427-9464  
Corner of Foothill & Cherry

17250 Foothill Blvd. Ste. H  
(909) 823-5440  
Across from Wal-Mart

17122 Slover Ave. #102  
(909) 4-CURVES, (909) 428-7837

### LOMA LINDA

11306 Mountain View Ave., Unit A, (909) 478-9499  
Corner of Barton & Mountain View

### RIVERSIDE

5225 Canyon Crest Dr. #400, (951) 684-1076  
Canyon Crest area

### SAN BERNARDINO

1983 Diners Court, (909) 890-9056  
South area

### UPLAND

96 W. Foothill Blvd., (909) 608-7666  
Sav-On shopping area

\*Offer based on first visit enrollment, minimum 12 mo. C.c program. Service fee paid at time of enrollment. Not valid with any other offer. Valid only at participating locations. Offer valid 11/15-12/19.



## We're Taking Notes

And we'd like to find out a little more about you, our readers, so we can better serve you. Please take a moment to fill out this survey.

### Send this survey to ...

FAX: 951-686-0290

Mail: IER, 5005 LaMart Dr. #204, Riverside, CA 92507

Or, go online at [www.InlandReview.com](http://www.InlandReview.com)

\_\_\_\_\_ name

\_\_\_\_\_ address

\_\_\_\_\_ city

\_\_\_\_\_ state and zip

**The first 50 READERS to reply will receive a free 1-year subscription to Inland Entertainment Review, mailed directly to your home.**

Future articles you would like to see:

\_\_\_\_\_  
\_\_\_\_\_  
\_\_\_\_\_  
\_\_\_\_\_

Where do you get your copy of IER?

\_\_\_\_\_  
\_\_\_\_\_

## VACATION GETAWAY


### Luxury paradise

Looking to get out of town for your next vacation? How about way out of town to a jungle paradise. A luxury Mayan-style resort stands overlooking a bay in Mexico, the culmination of an American dream. Thanks to the vision of Dallas-based hotel developer Robert E. Woolley, Woolley Hotel Company has brought decades of experience in building U.S. hotel empires, Crown Sterling Suites and Embassy Suites to Karmina Palace, its flagship luxury resort on Mexico's Pacific Coast.



The Palace offers an all inclusive vacation getaway. Guests help themselves to all the food and drinks (including wine, beer, premium cocktails, and tequila) they want, and all rooms are spacious suites designed specifically for family and comfort, with full mahogany trim, separate seating areas, two 27-inch televisions, and large marble bathrooms.

Karmina Palace is packed with luxuries and delights, including a wide variety of buffet and sit-down dining options. The energetic Recreation Staff helps guests have a fun-filled time with organized activities, games and entertainment throughout the day.

To learn more go online to [www.karminapalace.com](http://www.karminapalace.com). 

## 20th Annual Mountain Holiday Jubilee

November 26 - 28, 2004

### Let The Shopping Season Begin!

Experience a shopping excursion like no other. Take a trip to the high country and find some of the country's most unique items.

Friday and Saturday  
10:00 a.m. to 5:00 p.m.

Sunday  
10:00 a.m. to 3:00 p.m.

Admission: \$3.00 for adults,  
Children 12 and under Free

Located at the Convention  
Center at Big Bear Lake  
Corner of Big Bear Blvd. and  
Division Drive

Looking for that one special gift for the person who has everything? Come to the mountains and find it!

Featuring artists and crafters from throughout the Western United States.

Little shoppers will enjoy visiting Santa's Store where they can shop on their own offering gifts from \$.25 to \$5.00

Enjoy Carolers and Holiday Treats

**909-585-3000**  
[www.bigbearevents.com](http://www.bigbearevents.com)



## Big Bear Valley Community Arts Theater Society



Book by Burt Shevelove  
& Larry Gelbart  
Music & Lyrics  
by Stephen Sondheim

*Trappist Soliloquy  
Comedy Tonight!  
Sondheim's Send In The Clowns*

### A FUNNY THING HAPPENED ON THE WAY TO THE FOR



Produced, Directed, & Choreographed by  
**KAREN SARGENT RACHELS**

**Nov. 12, 13, 14 mat., 17, 19  
Nov. 20, 21 mat., 23, 26, 27**

Evening Curtain at 7:30 p.m.  
Sunday Matinees: Curtain at 1:30 p.m.  
**\$9.95 - \$18.95 ADULT RES. SEATING**  
**\$8.95 - \$16.95 SENIORS**  
**\$6.95 - \$11.95 STU/CHILD**

Big Bear Lake  
**Performing Arts Center**  
39707 Big Bear Boulevard  
BOX OFFICE (909) 866-4970  
Open Tues-Fri 1-6 p.m. & 1 p.m. Showdays

# Winter fun


*Coming soon: Snow and tubing*



Both locations feature excellent courses and amenities, including uphill lifts to help conserve your energy. Guests just step onto the moving conveyor belt with their inner tubes for an uphill ride that has them back on the snow for high-speed, downhill thrills in no time.

Big Bear Snow Play, which many years ago was a ski area, is the largest inner tubing area in Southern California, with long, wide-open runs. Alpine Slide at Magic Mountain is a full service family favorite that's also home to the signature bobsled-like ride of the same name. The Alpine Slide lets riders experience Olympic-like action as they negotiate sleds they control along a quarter-mile track with banked turns and long straightaways.

The Alpine Slide at Magic Mountain is located on the boulevard in Big Bear Lake, 1/4 mile west of the Village shopping area, home to 60 specialty stores. Big Bear Snow Play is also on the boulevard, three miles east of the Alpine slide next to Motel 6.

Both sites will remain open through the Thanksgiving holiday. 

**G**rab your earmuffs and pull out the winter jackets. Winter is just around the corner and so are the big snows and snow fun. While skiing may be great for adults, there's a way to get the kids skidding down the slopes too. Alpine Slide at Magic Mountain and Big Bear Snow Play, both in Big Bear, offer tubing experiences that should satisfy any thrill-seeking kid, and most adults.

The cold weather is coming, and weather reports indicate a good Winter ahead, making Alpine Slide and Snow Play great family destinations. Weather permitting, the slides may open as early as Nov. 1 this year, and sure to be running by Thanksgiving.

**WHERE:** Alpine Slide at Magic Mountain in Big Bear Lake

**PRICE:** \$20 for all-day pass

For more information, call (909) 866-4626

**WHERE:** Big Bear Snow Play in Big Bear Lake

**PRICE:** \$18 for all-day pass

For more information, call (909) 585-0075

**OFF  
BROADWAY  
PLAY SERIES**



closer  
than  
ever

*a musical review about ordinary life!*

Lyrics by Richard Maltby Jr.

Music by David Shire

Directed by Jodi Julian

Musical Direction by Gregory Nabours

Choreography by Robert Arqueta

with

Robert Arqueta, Sarah Aytte,  
Carlos Bronsal, Evan Davila, Jorge L. Gonzalez Jr., Gregory Nabours,  
Amber Odin, Kelly Ross, Daniel Schultz, Heatherly Stephens

November 19 & 20 at 8pm

November 20 & 21 at 2 pm

McDermont Hall

For tickets call (951) 222-8100

## BERG'S Specialty Services

YOUR LOCAL DEALER FOR  
AMERICAN FIBERGLASS  
POOLS & SPAS

**LOWEST PRICES!!!**



**Now A Full Line  
of Custom Above  
Ground Spas &  
Waterfalls**

- Fiberglass simplifies maintenance on average 80% and costs considerably LESS than concrete pools!
- The Fiberglass Composite is an inert material, which will not affect water chemistry and prohibits algae penetration.
- Choosing a Fiberglass Pool is a Solid investment in your property with long lasting durability

**WOW!**

1st 12 Callers Will  
Receive With Your  
Pool A 30 Day Pool  
Service Plus  
Automatic Pool  
Cleaner (value \$600)

**Call us today for a FREE estimate  
760-256-9190  
or toll free 877-255-9190**

[www.gotwater.com](http://www.gotwater.com)

# Remembering Pearl Harbor

*Planes of Fame honors Dec. 7*

Remembering Pearl Harbor will be the theme of the monthly special event at The Air Museum "Planes of Fame" at the Chino Airport on Saturday, December 4, 2004. The event will begin at 10 am with a seminar on the Japanese surprise attack against Pearl Harbor and, weather permitting, conclude with a flight demonstration of the "Planes of Fame" Japanese Mitsubishi A6M5 Zero fighter.

Although The Air Museum "Planes of Fame" tries to provide a diverse selection of subjects for its monthly special events, the attack against Pearl Harbor is usually the subject of each December event. Even more traumatic than the terrorists attacks of September 11, 2001, the events of December 7, 1941 shocked the United States out of its isolationists policies and vaulted the nation into the forefront of the seemingly never-ending struggle for worldwide peace and freedom.

While the Pearl Harbor attack was initial-

ly a dramatic victory for the Japanese Empire, it awoke a sleeping giant that eventually took the lead in the battle to defeat worldwide Axis tyranny and it set the stage for the United States to become the primary foe of worldwide tyranny in the post-war years as well.

More than any other airplane, the Mitsubishi Zero fighter came to represent Japan's aerial threat in the war over the vast tracts of the Pacific Ocean. Captured on Saipan in 1944, the "Planes of Fame" A6M5 Zero, still powered by its original Sakae radial engine, is currently the only fully authentic flyable Zero fighter in the world and its flight demonstrations are always eagerly anticipated by the public.

The first permanent air museum in the American west, The Air Museum "Planes of Fame" is staffed primarily by a core of dedicated volunteers and supports itself through donations, admission fees and proceeds from the use of its many flyable aircraft in various productions. The museum also has a special membership program available to



the public with the opportunity to actually experience the thrill of backseat orientation flights in genuine warbirds being one of the benefits. At each monthly special event, members in attendance including last-minute sign-ups, can have their names entered into a free drawing for the chance to win a warbird orientation flight. **R**

**WHEN:** Dec. 4, 10am.

**WHERE:** Air Museum

**"Planes of Fame" at the Chino Airport**

**TICKETS:** General \$8.95, 11 & under \$1.95

For more information, call (909) 597-3722

[www.planesoffame.org](http://www.planesoffame.org)

## THE HISTORIC GALLEANO WINERY

Looking for the perfect gift for your family, friends or clients? Let Galleano Winery help. We offer award-winning wines, custom gift baskets and labels personalized with your holiday message.



TASTING ROOM OPEN DAILY  
TOURS SAT. & SUN. OR BY APPT.  
PERSONALIZED WINE LABELS,  
MAIL ORDERS & CUSTOM GIFT  
BASKETS AVAILABLE

4231 Wineville Road, Mira Loma, California 91752  
Phone (951) 685-5376 · Fax (951) 360-9180  
[www.galleanowinery.com](http://www.galleanowinery.com)

Performance Riverside  
Steven A. Glaudini  
Executive Director/Producer  
presents

... it's still the WORD!!!

Book, Music and Lyrics by  
Jim Jacobs and Warren Casey

Musical Director/Conductor  
DOW LE MASTER

Director/Choreographer  
JOHN VAUGHAN

November 5, 8, 12, 13, 19, 20, 2004 at 8 p.m.  
November 7, 13, 21, 2004 at 2 p.m.  
[www.PerformanceRiverside.org](http://www.PerformanceRiverside.org)

Performance Riverside  
Linda Anderson  
Box Office  
4231 Wineville Avenue  
Mira Loma, CA 91752  
(951) 360-9180

A Salute: \$20, \$30, \$50  
• Box Office Hours:  
M-F, 11:30 am - 6:00 pm  
• No advance tickets by phone on the same  
afternoon, call (951) 360-9180  
• Group rates available for 10 or more

THE PRESS-ENTERPRISE  
Local News, Information & Entertainment

# Getting 'Funny' in Big Bear

## CATS presents 'A Funny Thing'

The Big Bear-based Community Arts Theater Society, C.A.T.S., will present one of the funniest musical comedies ever written, "A Funny Thing Happened On The Way To The Forum," for a 10 performance run at the Big Bear Lake Performing Arts Center starting November 12.

The classic "Comedy Tonight" opening number describes what is in store for a delightful evening of laughs and music. A select CATS cast of 18, headed by Brian Adams as Pseudolus, "will employ every device we know in our desire to divert you," incorporating classic American vaudeville, plain old "theatrical schtick" and classical farce.

"A Funny Thing" takes comedy back to its roots, combining situations from 2,000 year-old comedies of Roman playwright Plautus with the infectious energy of classic vaudeville. The riotous script, written in 1962 by Larry Gelbart (of M.A.S.H. &

Tootsie fame) in collaboration with Peabody & Emmy Award winner Burt Shevelove has been critically acclaimed as one of the funniest musical comedies in history. To add to the merriment, the score was written by Stephen Sondheim in his first words-and-music Broadway turn after great success as lyricist with West Side Story and Gypsy. Sondheim, after creating music & lyrics for "A Funny Thing" went on to become the king of Broadway, with shows such as Company, Follies, A Little Night Music, Sweeney Todd and Into The Woods.

Russ Lowery and "Sarge" Rachels co-produce the CATS production, with the set designed by Joanne McMaster. Brian Adams is Music Director and Priscilla Anderson is Costume Designer. **R**



Brian Adams as Pseudolus and a bevy of beauties from the CATS production of "A Funny Thing Happened On The Way To The Forum" opening November 12.


**WHEN:** Nov. 12, 13, 17, 19, 20, 23, 26, 27, 7:30pm; Nov. 14, 21, 1:30pm.  
**WHERE:** Big Bear Lake Performing Arts Center.  
**TICKETS:** Adults \$9.95-\$18.95, Seniors \$8.95-\$16.95; Students & Children \$6.95-\$11.95.

For more information, call (909) 866-4970 • www.bigbeartheater.org

### THE AIR MUSEUM PLANES OF FAME

## Remembering Pearl Harbor

The Air Museum Planes of Fame at Chino Airport will remember the attack on Pearl Harbor with a special exhibit, Dec. 4, 2004.



Captured on Saipan in 1944, the "Planes of Fame" A6M5 Zero, still powered by its original Sakae radial engine, is currently the only fully authentic flyable Zero fighter in the world.

**Seminar Dec. 4 at 10am**

Weather permitting, a flight demonstration will follow of a Japanese Mitsubishi A6M5 Zero fighter.

The Air Museum "Planes of Fame" is open to the public every day, except Christmas and Thanksgiving, from 9 am until 5 pm.

**General admission: \$8.95**  
**Youngsters: 11 and under admitted for \$1.95, admission is free for accompanied children under five.**

(909) 597-3722

www.planesoffame.org

### TELL ME MORE ... about an advertiser in this magazine.

If you wish to learn more about an advertiser or their product, or to place yourself on their mailing/emailing list, fill out this form and return it.

<input type="checkbox"/> 1199 GOLF	<input type="checkbox"/> CARRIAGES BY MARGARET	<input type="checkbox"/> KARMINA	<input type="checkbox"/> RCC DANCE
<input type="checkbox"/> ADAMS CART TRACK	<input type="checkbox"/> CATS	<input type="checkbox"/> KEENWOOD	<input type="checkbox"/> RCC OFF-BROADWAY
<input type="checkbox"/> ALPINE SLIDE	<input type="checkbox"/> CHILD. MUSEUM	<input type="checkbox"/> LAURA'S TRAVEL	<input type="checkbox"/> RIV. CHILDRENS TH.
<input type="checkbox"/> AMERICAN BEAUTY	<input type="checkbox"/> CHRISTMAS CONIFERS	<input type="checkbox"/> LINDMAIR BAKERY	<input type="checkbox"/> RIV. FESTIVAL OF LIGHTS
<input type="checkbox"/> AMERICAN CASINO	<input type="checkbox"/> CURVES	<input type="checkbox"/> LIVE OAK CANYON TREES	<input type="checkbox"/> ROCK CLIMBING
<input type="checkbox"/> ANTHONY THE MAGIC	<input type="checkbox"/> DAVEY'S LOCKER	<input type="checkbox"/> LIVING DESERT	<input type="checkbox"/> SB SYMPHONY
<input type="checkbox"/> ASPIRATIONS	<input type="checkbox"/> EL RANCHO VERDE	<input type="checkbox"/> MILESTONE MEDIA	<input type="checkbox"/> SAND HAVEN TREES
<input type="checkbox"/> AUGUSTINE CASINO	<input type="checkbox"/> FANTASY CASINO	<input type="checkbox"/> MURRIETA DAYSPA	<input type="checkbox"/> SAWDUST FESTIVAL
<input type="checkbox"/> AVI RESORT	<input type="checkbox"/> FIESTA NAVIDAD	<input type="checkbox"/> NC DEALER	<input type="checkbox"/> STARR LIMO
<input type="checkbox"/> BERGS	<input type="checkbox"/> FUN JUMP	<input type="checkbox"/> OAKTREE VILLAGE	<input type="checkbox"/> T AND D SCOOTERS
<input type="checkbox"/> BEST LAID PLANS	<input type="checkbox"/> GALLEANO	<input type="checkbox"/> OHANA	<input type="checkbox"/> TALAMASCA FARMS
<input type="checkbox"/> BIG BEAR CONVENTION	<input type="checkbox"/> HOLIDAY VILLAGE	<input type="checkbox"/> PALM SPRINGS AIR MUSEUM	<input type="checkbox"/> WELK
<input type="checkbox"/> CALICO	<input type="checkbox"/> HOME IMPROVEMENT	<input type="checkbox"/> PERFORMANCE RIV.	<input type="checkbox"/> WICKERD
<input type="checkbox"/> CANYON CREST	<input type="checkbox"/> INLAND DANCE	<input type="checkbox"/> PERRING	<input type="checkbox"/> ZIMBOS
	<input type="checkbox"/> JUST 4 FUN	<input type="checkbox"/> PLANES OF FAME	<input type="checkbox"/> ZOO 4U
		<input type="checkbox"/> RANDY'S PONY RIDE	

Send this form to ... FAX: 951-686-0290 • Mail: IER, 5005 LaMart Dr. #204, Riverside, CA 92507 Or, go online at www.inlandreview.com

name \_\_\_\_\_

address \_\_\_\_\_

city \_\_\_\_\_

state and zip \_\_\_\_\_

email \_\_\_\_\_

# Casinos

Text in RED denotes an event occurring this month.

**AGUA CALIENTE CASINO:** (866) 858-3600. www.hotwatercasino.com. 32-250 Bob Hope Drive, Rancho Mirage

**Bill Medley:** Nov. 12, 8pm. Cahuilla Showroom. Tickets: \$25, \$35, \$45. See article on page 20.

**AUGUSTINE CASINO:** 760-391-9500. www.augustinecasino.com. 84-001 Avenue 54, Coachella.

**Big Game Parties:** Monday nights with football, includes cash drawings.

**Play, Pick and Pay:** Pick the winning football teams each week and win. Call for details.

**Ladies Day:** Tuesday, from 10am-6pm. Ladies receive a coupon for \$2 in slot play, \$2 off any meal priced over \$4 in Cafe' 54, 2 free entries to the cash giveaways every hour from 10am-6pm, \$100 awarded every hour through 5pm. At 6pm one guest will win \$1000 cash. Men are also eligible for the cash giveaways, but get only one free entry.

**Double Point Tuesdays:** All guests receive double points on Tuesdays.

**Triple Point Thursdays:** All day, all points are triple their value.

**Blackjack Tournaments:** On Saturdays. Call for details.

**CAHUILLA CREEK CASINO:** (951) 763-1200. www.cahuilla.com. 52702 Highway 371, Anza

## Chili, Bikes and Blues

The Avi Resort and Casino is offering an unusual combo event from Nov. 26-27. The Chili, Bikes and Blues event combines a chili cookoff with motorcycles and some blues music thrown in for flavor.

The event will feature a poker run, bike games, vendors and lots of hot food.

Live blues music will be provided by Buddy Reed and John Earl.

Advance registration is available for \$5, \$10 the day of the event.

For more information, call 1-866-463-6284.



Continues on page 20

# AVI Resort & Casino

- New River View Rooms
- All Your Favorite Slots, Table Games, Keno, Sports Book & Bingo
- 455 Rooms, 29 Deluxe Spa Suites
- 5 Restaurants
- Best Buffet on the Colorado River
- Full Service & Dry RV Parking
- Brenden 8 Screen Movie Theatres
- 18-Hole Championship Golf Course
- Boat Launch
- Private Beach & Water Sports
- On-Site Kids Quest
- Live Entertainment Nightly
- Advantage Club - Membership Has Its Benefits!
- Promotions
- Special Events

**1-800-AVI-2-WIN**  
10000 Aha Macav Parkway • Laughlin, NV 89029  
[www.avicasino.com](http://www.avicasino.com)

Continued from page 19

**CASINO MORONGO:** (800) 252-4499. www.casinomorongo.com. 49750 Seminole Drive, Cabazon

**FANTASY SPRINGS CASINO:** (800) 827-2946. www.fantasyspringsresort.com.

**PECHANGA RESORT & CASINO:** (951) 693-1819. www.pechanga.com. 45000 Pala Road, Temecula. Box Office (951)

303-2507.

**Lynrd Skynyrd:** Nov. 13, 8pm, Showroom. Tickets: \$55, \$65, \$75.

**Tears for Fears:** Nov. 17-18, 8pm, Showroom. Tickets: \$70, \$80, \$90.

**B. B. King:** Nov. 20, 8pm, Showroom. Tickets: \$50, \$60, \$70.

**The Fab Four:** Nov. 26-27, 8pm, Showroom. Tickets: \$20, \$25, \$30.

**Kansas:** Dec. 3, 8pm, Showroom. Tickets: \$25, \$30, \$25.

**Drifters, Coasters and The Platters:** Dec. 5, 7pm, Showroom. Tickets: \$30, \$35.

**SAN MANUEL INDIAN BINGO AND CASINO:** (909) 864-5050. www.sanmanuel.com. 5797 North Victoria Avenue, Highland

**SOBOBA CASINO:** (951) 665-1000 or (866) 4-SOBOBA. www.soboba.net. 23333 Soboba Road, San Jacinto. Tickets: 1-866-4-SOBOBA, ext. 183.

**King of the Cage:** Nov. 14. Call for tickets and information.

**\$1,000,000 Giveaway:** Soboba Casino is giving away \$1,000,000 on Dec. 16, and \$15,000 every Thursday leading up to the big event. The more entries earned every day, the more chances to win.

**Bingo:** Mon. - Fri: 8 & 10:30 p.m.

**Comedy Nights:** First Wednesday of every month in ACs Lounge. Tickets \$5 with Player's Club, \$7 without, available after 2 p.m. at the box office.

**AC's Lounge:** Live entertainment throughout the week.

**SPA RESORT CASINO:** (760) 323-5865. www.sparesortcasino.com. 401 E. Amado Rd., Palm Springs.

**\$250,000 Fall Cash Blast:** Through November 30, Agua Caliente Casino and Spa Resort Casino are giving away a total of \$250,000 in cash. Each casino will have a \$10,000 cash drawing at 6pm every Sunday through November 28, and \$1,000 cash drawings every Monday through Thursday through November 30. Thanksgiving Bonus: On Thursday, November 25, an additional \$1,000 will be added to the cash prize total at each casino.

**Cruise Night:** Presented by Palm Springs Cruisin' Association, benefiting The Desert Cancer Foundation and, in the month of December, The Bread of Life Charities. The first Saturday of every month from 4pm - 8pm the Spa Resort Casino will host this free spectator event. Car enthusiasts will enjoy over 100 classic cars, muscle cars, hot rods, street rods, corvettes, customs, antiques, restored and original collectable cars, all for free viewing by the general public. If you are not an association member and have your own classic car to display the registration fee is \$5 for the night. For more information, go online to www.palm-springscruisinassociation.com.



## North County Dealer School

**COMPLETE TRAINING**  
in the casino games:  
**Blackjack · Pai Gow Poker  
Mini-Baccarat**

Discount · Murrieta/Temecula area  
Day & Evening Classes · Payment plans available  
**760-432-9622**  
State License #29369597

## SHADES OF FALL GIVEAWAY

The Shades of Fall are Green at Augustine Casino. That's because we're having our Shades of Fall Giveaway, with cash drawings every Wednesday in November. We're giving away \$100 every hour from 12pm to 8pm with multiple drawings at 9pm for \$250, \$500 and \$1,000. Then join us for the Grand Finale on November 28 for hourly giveaways from 12pm to 8pm, and at 9pm when 3 guests will be selected for a chance to win \$500, \$1,000 or \$5,000 respectively.

See the Augustine Field Club for details.



### Augustine Casino 2004

Every Saturday in November and December, lucky players like you will be randomly selected every hour from 10am to 4pm to choose from three pairs of gold and naturally set up to \$100 - just for having your Gold Club card inserted in a slot machine at the time of play. (Excludes December 24, 2004.)



### Holiday Seasonal Sweepstakes

It's the Holiday Seasonal Sweepstakes and it happens every Friday in November and December. A guest will be selected from the drawing drum each hour from 1pm to 4pm to win \$100. This hour type to give one lucky guest will be selected to win \$100 each hour. Winners will also receive Augustine Casino's Holiday Seasonal sweepstakes. In addition any guest who spins 500 points within a 24-hour period will also receive a Holiday Seasonal sweepstakes.

(Excludes November 28, 2004 & December 31, 2004.)

**AUGUSTINE CASINO**

**AVENUE 54 AT VAN BUREN • 760-391-9500**

AUGUSTINE CASINO RECEIVED THE HONOR TO ALTER OR CHANGE ITS PERMITS/REGISTRATION WITHOUT FURTHER NOTICE.

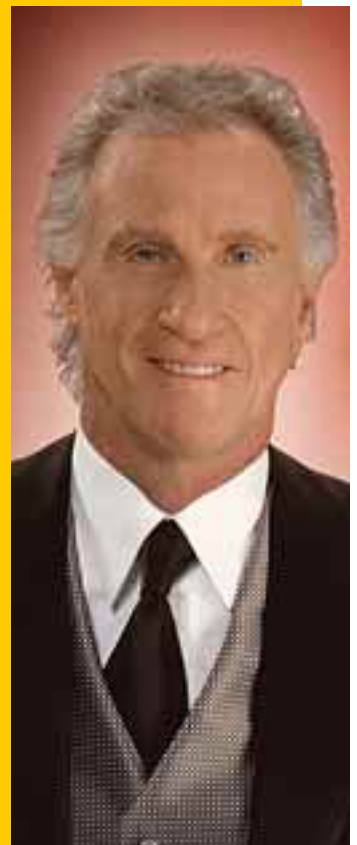
## Bill Medley in Concert

On Friday, November 12, at 8pm, Grammy Award winner Bill Medley will perform live in the Cahuilla Showroom at the Agua Caliente Casino in Rancho Mirage.

Medley is known for his rich and distinctive voice that has been a cornerstone of popular music for over 30 years. Some of his hits with partner Bobby Hatfield include "You've Lost That Lovin' Feeling," "(You're My) Soul and Inspiration," "Unchained Melody" and "Just Once in my Life." His duo with Jennifer Warnes "I've Had the Time of my Life" from the motion picture Dirty Dancing won a Grammy and a Golden Globe award.

Ticket prices are \$25, \$35, and \$45.

For more information, call (866) 858-3600 or go online to www.hot-watercasino.com. Agua Caliente Casino is located at 32-250 Bob Hope Drive in Rancho Mirage.



**TRUMP 29 CASINO:** (760) 775-5566.  
www.trump29.com. 46-200 Harrison Place,  
Coachella

Entertainment in the Spotlight Showroom: Tickets for all shows can be purchased through the casino box office or through Ticketmaster at www.ticketmaster.com or (213) 480-3232.

**DJ Life:** Wednesdays, in the Blue Bar, 8 p.m.-1:30 a.m. Rock, Spanish rock, blues.

**Barry Minniefield (4pc band):** Wednesdays, in the Blue Bar, 9 p.m.- 1:30 a.m. Classic pop to light classical, film and stage.

**Blue Bar:** Disco, blues and rock, Thursday - Saturday, 8 p.m. - 1:30 a.m.

## FEATURED LAUGHLIN CASINOS

**AVI RESORT & CASINO:** (800) AVI-2-WIN.  
www.avicasino.com. 10000 Aha Macav Parkway,  
Laughlin, Nevada.

**Payday Fridays:** Win \$50-\$250 Every 30 Minutes on Fridays, 5pm through 11pm, with a second chance drawing for \$250 at Midnight.

**Time is Money:** \$100 Every 30 Minutes on Sundays, 10am through 8pm, with a second chance drawing for \$250 at 9pm.

**Double Point Thursdays:** 10am-10pm, double points on Advantage Club card.

**Blackjack Tournament:** Tuesdays & Thursdays - \$10 buy-in; \$15 with buffet; \$5 re-buy. Registration begins at noon. Tournament sessions at 5pm, 6pm & 7pm. \$1,200 total prize payout.

**Video Poker:** Wednesdays - Free. Registration begins at 1pm. Tournament starts at 2pm. 1st-\$800, 2nd-\$500, 3rd-\$200.

**5 Buck Bingo:** Monday, Thursday, Sunday, 4pm & 7pm.

**Free Bingo:** Monday through Friday 8am & 11am.  
Gun, Knife & Fishing Show: By popular demand

the Avi is announcing the next dates of this popular gun, knife and fishing show: Friday, Saturday and Sunday, December 17-18-19, 2004. To accommodate this show, the event will be housed in a single 12,000 square-foot venue with up to 300 merchant/vendor tables.

Participants are encouraged to call now to reserve their space at the Avi Resort & Casino's Gun, Knife & Fishing Show. Interested parties should call Fred at 702-535-5536 or Bonnie at 702-535-5518 for additional information.

**PIONEER HOTEL AND GAMBLING HALL:** 2200 South Casino Drive, Laughlin, Nevada 89029. (702) 298-2442, Toll Free (800) 634-3469, www.pioneerlaughlin.com. The Pioneer features a variety of slot machines, table games with \$1 Blackjack and 10X Odds on Craps, Live Keno, 3 Food Outlets, Daily Jet Boats Tours to Lake Havasu City AZ and the London Bridge and a wide variety of tournaments. Features 416 rooms decorated in turn of the century old fashioned victorian furniture with 80 rooms right on the banks of the beautiful Colorado River. They offer wave runner rentals in the summer as well.

**Hard Hat Horsepower Giveaway:** Oct. 1 through Jan. 31, 2005. Win a 2004 Dodge 2500 SLT Quad Cab. Call for details or go to the Player's Club.

**Ladies Only \$10,000 Blackjack Tournament:** Entry is \$50.00 and registrations starts at 9am to High Noon with play beginning at High Noon on Friday, November 5, 2004. To sign up or for more details contact the Table Games Department at (800) 634-3469, or (702) 298-2442.

**The Midas Touch:** November 1st -30th, 2004 Win \$200.00 a day for playing Craps! The person with the most "Consecutive Front Line Passes" for the day Wins! Weekly Winners Too! Stop by the Table Games area for complete rules.

**\$25,000.00 Blackjack Tournament:** December 3rd & 4th, 2004. Tiered entries with or without room stays. For more information, or to register call Matt Hawks, Betty Favery or Shirley Skinner at (800) 634-3469 or (702) 298-2442.

**Doc Holladay's Player's Only Video Poker Tournament:** Every Wednesday & Friday from 7am - 2 pm. Entry only with qualifying play on your Player's Club Card - Bounty Hunter Round Up Club Card. (Player's Club is Free to join) Ask any of our friendly employees for more information.

**Doc Holladay's Little Slot Shoot Out:** Every Thursday 7am - 2pm. Entry only with qualifying play on your Player's Club Card - Bounty Hunter Round Up Club Card. (Player's Club is Free to join) Ask any of our friendly employees for more information.

**Friday Night Seafood Buffet:** Come in and try the Friday Night Seafood Buffet featuring such items as Grilled Lobster, Steaks, Clam, Mussels, Peel & Eat Shrimp, BBQ Shrimp, Fried Chicken, Crab Legs and so much more. Served every Friday 1pm to 11pm and only \$18.95

**Granny's Award Winning Sunday Champagne & Bloody Mary Brunch:** Open Sunday at 9am. Reservations are suggested and must be 21 years of age or older to attend.

**Monthly Gift of the Month program:** Earn bonus points, get free gifts and best of all you get to keep the bonus points

**Pot O' Gold Keno Tournament:** Held every Wednesday starting at 11am in the Keno Korral lounge. 10 Drawings throughout the tournament for a chance to open the Treasure Chest O' Prizes. Complete rules posted in the Keno Korral.

**Keno Kash Tournament:** A popular among the locals held every Saturday starting at 5pm. You play your regular tickets and get a chance to win Keno Kash to spend for future games. Complete rules posted in the Keno Korral. ☑

**The Inland Entertainment Review is now available for yearly subscriptions**



Yes, I don't want to miss a single issue. Send it directly to me each month.

**\$22**

FOR A FULL YEAR OF

**Inland ENTERTAINMENT REVIEW**

Just fill out this form and mail to:  
Word Mill Publishing  
5005 LaMart Dr. #204, Riverside, CA 92507  
Or fax it to: 951-686-0290  
Or subscribe online at www.InlandReview.com

Name

Address

City

State

Zip

You will be billed to the address above.

# Golf

## Riverside County

**CALIENTE SPRINGS GOLF COURSE:** 70200 Dillon Rd., Desert Hot Springs. 9-hole course. (760) 329-8400.

**CANYON SPRINGS GOLF COURSE:** 1097 Murray Canyon Dr., Palm Springs. 18-hole course. (760) 327-2019.

**CRESTA VERDE GOLF CLUB:** 1295 Cresta Rd., Corona. (951) 737-2255. 18-hole public course.

**CROSS CREEK GOLF CLUB:** 43860 Glen Meadows Rd., Temecula. 18-hole public course. (951) 506-3402.

**DIAMOND VALLEY GOLF CLUB:** 31220 Sage Rd., Hemet. 18-hole course. (951) 767-0828.

**EAGLE GLEN:** In Corona, 1800 Eagle Glen Pkwy. 18-hole course. (951) 272-4653.

**EL RIVINO COUNTRY CLUB:** 5530 El Rivino Rd. in Riverside. (951) 684-8905.

**FAIRMOUNT PARK GOLF**

**COURSE:** Historic 9-hole public course, over 3183 yards. 2681 Dexter Dr., Riverside. (951) 682-2202.

**GENERAL OLD GOLF COURSE:** 6104 Village W. Dr., Riverside. (951) 697-6690. 18-hole public course.

**INDIAN HILLS GOLF CLUB:** 5700 Club House Dr., Riverside. 18-hole public course. (951) 360-2090.

**INDIAN WELLS GOLF RESORT:** 44-500 Indian Wells Ln., Indian Wells. 36-hole course. (760) 346-4653.

**JURUPA HILLS COUNTRY CLUB:** 6161 Moraga Ave., Riverside. (951) 685-7214. 18-hole public course.

**PARADISE KNOLLS:** 9330 Limonite Ave., Riverside. (951) 685-7034. 18-hole public course.

**REDHAWK GOLF CLUB:** 45100 Redhawk Pkwy., Temecula. (951) 302-3850. 18 hole public course.

**RIVERSIDE GOLF CLUB:** 1011 N.

Orange St., Riverside, (951) 682-3748. New club house, banquet facilities.

**SKY LINKS GOLF COURSE:** 6720 Van Buren Blvd., Riverside. (951) 688-2563. 18-hole public course.

**TEMEKU HILLS GOLF COURSE:** 41687 Temeku Dr., Temecula. (951) 693-1440. 18-hole public course.

**WHISPERING LAKES GOLF COURSE:** 2525 E. Riverside Dr., Ontario. (909) 923-3673. 18-hole public course.

## San Bernardino County

**BEAR MOUNTAIN GOLF COURSE:** 43101 Goldmine Drive, Big Bear Lake, (909) 585-8002, www.bigbearmountainresorts.com. 9-hole public course

**CLAREMONT GOLF COURSE:** 1550 N. Indian Hill Blvd., Claremont, (909) 624-2748,

www.claremontgolf.com. 9-hole public course.


**COLTON GOLF CLUB:** 1901 West Valley Boulevard, Colton, (909) 877-1712. Public course.

**CREEKSIDE GOLF COURSE:** 3151 E. Riverside Dr., Ontario. (909) 947-1981. 9-hole public course.

**EL RANCHO VERDE GOLF COURSE:** 355 E. Country Club Dr., Rialto. (909) 875-5346.

**EMPIRE LAKES GOLF COURSE:** 11015 Sixth Street, Rancho Cucamonga, (909) 481-6663, www.empirelakes.com. Public course.

**LOS SERRANOS GOLF COURSE:** 15656 Yorba Avenue, Chino Hills, (909) 597-1711, www.losserranoscountryclub.com. Public course.

**PALM MEADOWS GOLF CLUB:** 1964 E. Palm Meadows Dr., San Bernardino. 18-hole course. (909) 382-2002. 



**11-99 Golf Tournament**

**Feb. 4, 2005**

**PLAY GOLF AND HELP LAW ENFORCEMENT FAMILIES IN THEIR TIME OF NEED!**

THE 11-99 GOLF TOURNAMENT BENEFITS THE 11-99 RELIEF FOUNDATION, SERVING THE FAMILIES OF WOUNDED AND FALLEN OFFICERS IN RIVERSIDE COUNTY

**(951) 686-7575**



**EL RANCHO VERDE Golf Club**

**Maniac Mondays**  
**\$22**  
All day long!  
Includes: Cart & Green Fees  
Excludes Holidays  
LIMITED TO AVAILABILITY

**2 For 1 Green Fees**  
Everyday after 10:30 am  
Cart not included

**Senior Tuesdays**  
**\$22**  
All Day Long!

**Sports Bar Now Open**  
7 Days A Week for Breakfast and Lunch  
Hours: 6am - 2pm

**SCRATCH SKINS GAME EVERY TUESDAY 11AM**  
**MOST IMPROVED COURSE IN SOUTHERN CALIFORNIA**

**355 E. Country Club Dr., Rialto, CA**  
**(909) 875-5346**

Offers not valid on tournaments, course holidays or with any other discount or twilight rates. Dress code enforced (no T-shirts). Expires 11-30-04.

# Party Planning Page

**American Casino & Mobile Dj Rentals**

**909-923-6536**

HOME / BUSINESS / HALLS / HOTELS / SCHOOLS



CASINO PARTIES for BIRTHDAYS- HOLIDAYS- FUNDRAISERS  
craps -blackjack -roulette -horse race -money wheel -dealers

**ZIMBO'S**

Jumpers starting at \$49.99

**LEAVE YOUR PARTY TO US!**

Balloons, jumpers, clowns, face painters, and more!  
Now taking reservations for Balloon Bouquets and table & chairs for New Year's parties.

**(909) 882-1488**  
www.zimbosparties.com

**ROCK CLIMBING  
ZIP LINE RENTALS**

*Extreme Fun!*

**WE TRAVEL TO YOU**

**714-448-6075**  
WeTotallyRock.com

www.just4funproductionsmobiledj.com

Weddings, Parties, & Corporate Events

Our Services Include  
Lighting, Wireless Mic, and MC  
With No Hidden Charges

**(909) 229-0898**

**FANTASY 100 CASINO**

For Fun or Fundraising

California's Finest Casino Parties and Event Planning Since 1977

From 5 to 5000 guests

**800 321-7909**  
www.fantasycasino.net

**Zoo4 U**

**A Mobile Zoo For Any Special Occasion**

**(760) 288-4455**  
www.mobilezoo4u.com

**OHANA HULA**

Entertainment for Lu'au's, Birthday Parties, Special Events  
Dance Instruction for ages 4-Adult

www.ohanahula.com  
**(909) 437-5874**  
E-Mail: ohanahula@sbcglobal.net

**BEST LAID PLANS**

Party & Event Planning  
**(909) 641-2672**

Call us for all your party needs. We will find the right location, entertainment, DJ, photographer, caterer and florist.

**No event is too small or too big!!**

**ASPIRATIONS BY ANITA**

**PARTY & SPECIAL EVENT PLANNERS**

- ✓ Weddings
- ✓ Anniversaries
- ✓ Bat & Bar Mitzvahs
- ✓ Quinceaneras
- ✓ Company Picnics
- ✓ Entertainment
- ✓ Disc Jockeys
- ✓ Clowns
- ✓ Caterers
- ✓ Bouncers

Decorations for All Occasions  
**(951) 640-4842**

**One Call We Do It All!**

## PARTY WITH US!

Reach more than 60,000 Inland Empire readers at more than 450 locations throughout the twin counties!

To advertise in the



call (951) 686-7575

## Party Cakes

For All Occasions

### LINDMAIR BAKERY



Mention Paula Lindmair and get a 10% discount on any cake

All cakes baked fresh!!!

**(951) 688-2131**



**ADAMS KART TRACK:** For ages 5 and up. Pro shop, kart track, racing school. 5292 24th St. in Riverside. (951) 686-3826. [www.adamskart-track.net](http://www.adamskart-track.net).

**ALPINE SLIDE AT MAGIC MOUNTAIN:** A full service family favorite that's also home to the signature bobsled-like ride of the same name. The Alpine Slide lets riders experience Olympic-like action as they negotiate sleds along a quarter-mile track with banked turns and long straightaways. Getting to the top is a snap with Magic Carpet uphill lifts. Guests just step onto the moving conveyor belt with their inner tubes for an uphill ride that has them back on the snow. The Alpine Slide at Magic Mountain is located on the boulevard in Big Bear Lake, 1/4 mile west of the Village shopping area, home to 60 specialty stores. 800 Wild Rose Lane. Call (909) 866-4626.

**BOOMERS:** In Upland. Miniature Golf Courses, Go Karts, Bumper Boats, Rock Wall, Ferris Wheel, Spinning Tubs, Airplane Ride, Tiny Tot Cars, Bounce House, Two Arcades, Snack Bar & Cafe. 1500 W. Seventh, Upland. Call (909) 985-1313.

**GROVE THEATRE:** Call for schedule of youth theater productions. Located in historic downtown Upland. (909) 920-4343. [www.grovetheatre.com](http://www.grovetheatre.com).

**HARVEST FAIR:** Nov. 6-7, 13-14, 10am-5pm.

**RIVERSIDE CHILDREN'S THEATRE**  
**BEAUTY AND THE BEAST**  
 Dec. 3, 4, 10 & 11  
 Evenings 7:30pm & Sat. 1:30pm  
 At 7675 Magnolia Ave., Riverside  
 Tickets \$7 presale, \$10 at the door  
**(951) 359-6075**  
 Group Sales (951) 351-9871 or  
 (951) 735-5401  
 Group Tickets \$6 for 10+

## Traveling zoo adds some scaly friends

Something new has been added to the Zoo-4-U attractions. In addition to the Mobile Zoo, a party favorite for special occasions including birthdays, church and school events, Zoo-4-U now offers a Reptile Presentation.

This show, which is great for school functions or parties, includes fascinating reptilian creatures, from frogs and geckos to slithery snakes and monstrous lizards. And you can even watch "Godzilla," the Savannah Monitor, devour a chicken leg

with one bite!

Art True, the owner, has been providing animal presentations for more than 13 years and knows how to make his shows fun and educational for the kids. The "zoo" currently consists of chickens, rabbits, ducks, goats, pot-bellied piglets, Florida tortoises, frogs, snakes and lizards.

The Zoo-4-U mobile unit has air conditioning and lighting for any weather or time. For information, call 760-288-4455.

Take a trip to the Old West in the recreation setting with live musical entertainment, period costumes and food. 8088 Palm Lane, San Bernardino. General admission \$3, children under 7 free. (909) 384-5426.

**LIFEHOUSE THEATER:** "Sherlock Holmes Faces Death," through Nov. 21. Holme's faces his nemesis, Professor Moriarty. "A Little House on the Prairie Christmas," Dec. 4-30. An old-fashioned frontier Christmas. Reservations may be made by calling (909) 335-3037, ext. 21. [www.lifehousetheater.com](http://www.lifehousetheater.com) The theater is located at 1135 N. Church St. in Redlands.

**THE LIVING DESERT:** Zoo featuring flora and fauna of the area's deserts. Located south of State Highway 111 at 47-900 Portola Avenue, Palm Desert. Beginning the weekend of Nov. 26, WildLights Holiday Festival, from 6-8pm. Will run through Jan. 2, 2005, with the zoo lit up in holiday lights. WildLights admission is \$6.75 adults, \$5.00 children (ages 3-12), Living Desert members \$5.50. See article on page 6. 760-346-5694, [www.livingdesert.org](http://www.livingdesert.org).

**MORAN RACEWAY:** Drive high-performance go-carts. Includes driving schools, corporate events and rentals. (951) 522-9302, [www.moranraceway.com](http://www.moranraceway.com).

**OAKTREE VILLAGE:** 39490 Oak Glen Rd., in Oak Glen. Open every day, with entertainment every weekend. Artisans, pony rides, animal park, trout fishing, shops, restaurants and more. (909) 797-4020. [www.oak-tree-village.com](http://www.oak-tree-village.com).

**PLANES OF FAME:** Nov. 6, 10am, at the Air Museum Planes of Fame in the Chino Airport, historical seminar on flight tests and get the chance to

see a Northrop flying wing in action. Dec. 4, 10am, Remembering Pearl Harbor. (909) 597-3722.

**RIVERSIDE CHILDREN'S THEATRE:** Beauty and the Beast, Dec. 3, 4, 10 and 11. 7675 Magnolia Ave., Riverside. (951) 359-6075.

**RIVERSIDE YOUTH THEATRE:** (951) 485-7648 for details. [www.riversideyouththeatre.org](http://www.riversideyouththeatre.org). The Music of Modern Broadway: A Show Choir revue featuring songs from Aida, Hairspray, Movin' Out, The Boy From Oz, Thoroughly Modern Millie and Wicked. Nov. 11, 10am & 7:30pm, Nov. 12, 7:30pm, Nov. 13, 2 pm & 7:30pm, Nov. 14, 2 pm. Performance Location: Cross Winds Community Theatre, 29263 Ironwood Avenue, Moreno Valley (North off the 60 Freeway @ Redlands Blvd., Turn right at Ironwood Avenue). Tickets: \$10.



Kids will love entering the Old West at the San Bernardino Harvest Fair, Nov. 6-7.

**SPECIAL PLACE HANDS-ON MUSEUM:** Children learn through hands-on experience. 1003 E. Highland Ave., San Bernardino. (909) 881-1201. For more fun kids events, such as Beach Activities, Fairs & Festivals, Miniature Golf, Museums, and Theme Parks, see the What To Do section on page 25.

**A Special Place**  
**Children's Hands On Museum**  
 • Children learn through hands-on experience  
 • Exhibits allow both disabled & non disabled children to participate side by side in their learning.  
 • A learning, growing process for children to learn about the world in which they live.  
 • A place that will enrich the lives of all children.

1st Saturday of the Month  
 Grandparents admitted  
 FREE w/ paying child.

Hours: Monday ..... 1-5pm  
 Tuesday-Friday ..... 9-5pm  
 Saturday ..... 11-3pm  
 Closed Sunday & Major Holidays

**Admission: \$2 per person**  
 (Children 2 & under FREE)  
 \$150 Per Person For Groups of 15 or More  
 Advance reservations are required for groups.

Reserve your private Birthday Party date now. Call for more information.

1003 East Highland Ave. San Bernardino, CA 92404 • 909.881.1201

# What to do

Beach Activities 25	Concerts 25	Holiday Celebrations 26	Nightlife/Dining 27	Theme Parks 29
Casinos 19	Dance 25	Kid Stuff 24	Racing 28	Wineries 29
Children's Activities 25	Fairs, Festivals, Events 25	Miniature Golf 26	Snow and Ski 28	
Christian Events 25	Golf 22	Museums 26	Theater/ Ballet/ Opera 28	

Text in **RED** denotes an event occurring this month.

## BEACH ACTIVITIES

**DAVEY'S LOCKER:** Whale watching and fishing trips. Newport Beach, (949) 673-1434. [www.daveyslocker.com](http://www.daveyslocker.com). See coupon on page 30.

**SHELLBACK YACHT CRUISES:** Sail the California coastline to Laguna Beach or Dana Point as a private birthday, anniversary or special event. [www.shellbackdon.com](http://www.shellbackdon.com), 949 632-3736. See coupon on page 30.

## CASINOS

See Casinos on page 19.

## CHILDREN'S ACTIVITIES

See Kid's Stuff on page 24.

## CHRISTIAN EVENTS

### CALIMESA COMMUNITY CONCERTS:

Christian artists headlines the 20th Annual Calimesa Community Concert Series, sponsored by Calimesa Seventh-day Adventist Church. For a brochure on all concerts, call (909) 795-4960 or write P.O. Box 647, Calimesa, CA 92320.

**CHRISTIAN SINGLES EVENTS:** Karaoke, Speedy Introductions & Bunco: Call for upcoming dates. Dinner-Dances at the Spectrum Club, Fullerton, Nov. 20. Christmas Dinner Dance, Dec. 11, Betty H. Reckas Cultural Center, Long Beach. New Year's Eve Dance, Dec. 31, Anaheim Convention Center (alcohol free). Up to 700 attend. 714/210-3337 [ccisingles.com](http://ccisingles.com)

## CONCERTS

**HYUNDAI PAVILION:** In Glen Helen, Devore. (909) 880-6500. (909) 886-8742.

## DANCE

**KINETIC CONVERSATIONS:** Riverside Community College Dance Department presents, Dec. 3-4, at Landis Auditorium. (951) 222-8100.

## FAIRS, FESTIVALS, EVENTS

**CRUISIN' LA VERNE:** 7th Annual cruise with Holiday theme, Nov. 27, 10am-4pm, in old town La Verne. (909) 593-9907.

**FALL PLANT SALE:** Nov. 6-7, at Rancho Santa Ana Botanic Garden, 1500 N. College Ave., Claremont. Large selection of hard-to-find plants. Free admission. (909) 625-8767. See article on page 11.

**HERITAGE FESTIVAL:** Nov. 26-28, at Calico Ghost Town. Cowboy poets, living history displays, line dancing and more. 1-800-TO CALICO, [www.calicotown.com](http://www.calicotown.com).

**HARVEST FAIR:** Nov. 6-7, 13-14, 10am-5pm. Take a trip to the Old West in the recreation setting with live musical entertainment, period costumes and food. 8088 Palm Lane, San Bernardino. General admission \$3, children under 7 free. (909) 384-5426.

**MISSION INN RUN:** Nov. 14, 7:30am-Noon. At Mission Inn Ave. and Market St. (951) 788-9556, [www.active.com](http://www.active.com).

**MOUNTAIN HOLIDAY JUBILEE:** Nov. 26-28, 10am-5pm Fri. and Sat., 3pm Sun. Arts and crafts show offering unique Holiday gifts. Convention Center at Big Bear Lake, corner of Division Dr. & Big Bear Blvd. Tickets: \$3 adults, children under 12 free. (909) 585-3000, [www.bigbearerevents.com](http://www.bigbearerevents.com). See article on page 14.

**SAWDUST ART FESTIVAL 14TH ANNUAL WINTER FANTASY:** A Winter version of the popular art festival, with art, crafts and gifts, plus Santa. Nov. 20-21, 26-28, Dec. 4-5, 11-12, 10am-6pm. 935 Laguna Canyon Rd., Laguna Beach. Tickets: Adult \$4.50 one-day, \$5.50 Season Pass; children 6-12 \$2, free for 5 and under. (949) 494-3030, [www.SawdustArtFestival.org](http://www.SawdustArtFestival.org). See article on page 13.

## GOLF COURSES

See Golf on page 22.

Get your event listed in the

**ENTERTAINMENT  
REVIEW**

## What to do section

If you have an upcoming event that you would like to see listed in these pages, please send the following information:

- Name of the event
- Date and time
- City, location and address
- A contact phone number
- Name of the person submitting the event

Send it in one of the following ways:

EMAIL: [IER@InlandReview.com](mailto:IER@InlandReview.com)

FAX: (951) 686-0290

MAIL: Inland Entertainment Review, c/o Word Mill Publishing, 5005 La Mart Dr. #204, Riverside, CA 92507

WEB: Go online at [www.InlandReview.com](http://www.InlandReview.com) and fill out our online submission form.

Inland Entertainment Review reserves the right to publish or withhold any material sent. Materials mailed will not be returned.

**ANTHONY**  
*the Magic*

Top-notch Las Vegas-style  
professional entertainment!

**ANTHONY HERNANDEZ**  
**(951) 538-4221**

**Yule Be Unique!**



FindItUnique.com

With Gifts from  
**FindItUnique.com**

# CHRISTIAN SINGLES

## FUN EVENTS

Membership not required to attend events - alcohol free. For ages 19 to 91

**KARAOKE, SPEEDY INTRODUCTIONS & BUNCO**  
Call for upcoming dates

**DINNER-DANCES**  
At the Spectrum Club, Fullerton,  
Nov. 20.

**COUNTRY WESTERN & SWING**  
At Spectrum Club, Fullerton.

**WESTERN CARIBBEAN CRUISE & SEMINAR ON ROYAL CARIBBEAN**

**CHRISTMAS DINNER DANCE**  
Dec. 11, Betty H. Reckas Cultural  
Center, Long Beach

**NEW YEAR'S EVE DANCE**  
Dec. 31, Anaheim Convention Center  
(alcohol free), up to 700 attend.

### ONE-ON-ONE INTRODUCTIONS

Make a FREE appointment to view members' pictures & 7-page profile. Members located throughout Southern California.

**CONFIDENTIAL CHRISTIAN INTRODUCTIONS**  
714/210-3337 888/222-8818 WWW.CCSINGLES.COM

# Tournament of Roses Parade

Saturday, January 1, 2005 • Pasadena  
\$98 per person

- Round-trip transportation from Redlands to Pasadena
- Official full color souvenir program
- Grandstand seats at 2000 East Colorado Boulevard
- Juice and donuts on board the bus

Call today to reserve your space...  
(909) 793-7551 • (800) 350-2511  
298 East Citrus Ave., Downtown Redlands  
www.laurastravel.com CST#2007045-10

*Laura's  
Travel Service Inc.*

## Davey's Locker

\$5.00 OFF! with this ad

Sportfishing - Newport Beach

THE MOST CONVENIENT OCEAN FISHING FOR THE INLAND EMPIRE!

1/2 DAY • 3/4 DAY  
TWILIGHT • FULL-DAY  
SKIFF RENTALS  
TACKLE SHOP w/ROD RENTALS

\$5 OFF ADULT FARE ALL TRIPS.  
EXPIRES 11/30/2004

Orange County's Best Sportfishing

INFORMATION & RESERVATIONS  
(949) 673-1434  
www.daveysalocker.com



All Skill Levels Welcome!

- November 6 • Thunder Over the Desert\***  
Air Museum will exhibit 8 Warbirds at the Thermal Regional Airport to celebrate re-dedication of the airport to the Jacqueline Cochran Regional Airport. Free admission to airshow.
- Nov 11 • Dedication of the Distinguished Flying Cross Monument**  
11:00 AM in front of the Air Museum. PSHH Band, special speakers and fly over by the Stearman and B-25.
- Nov 13 • Air Museum Celebrates 8th Anniversary.**  
Special activities throughout the day along with flight demonstrations by the P-51, B-25, P-63 and B-17.
- Nov 20 • Tuskegee Airmen Program**  
With special speakers and music. Flight Demonstration of the P-51 and B-25
- Nov 25 • Closed on Thanksgiving Day (Happy Holiday)!**



**PALM SPRINGS AIR MUSEUM**  
745 N. Gene Autry Trail, Palm Springs  
(between Vista Chino & Ramon Rd.)  
Open daily: 10am-5pm  
www.PalmSpringsAirMuseum.org  
**(760) 778-6262**

## HOLIDAY CELEBRATIONS

### 10TH ANNUAL WELK MUSICAL CHRISTMAS: Nov. 11 through Dec. 31.

Starring Anacani, Mary Lou Metzger, Big Tiny Little. Tickets \$38-\$56. 8860 Lawrence Welk Dr., Escondido. 1-888-802-7469, www.welkresort.com.

**CHRISTMAS TREE FARMS:** See feature on page 10.

**FIESTA NAVIDAD:** A musical celebration of Christmas, featuring Mariachi Los Camperos de Nati Cano. Dec. 18, 7:30pm. California Theatre of Performing Arts, 562 West 4th Street in San Bernardino. For Tickets call the Sinfonia Mexicana office at (909) 884-3228 (Toll Free) 1 (866) 687-4284. Tickets: \$22-\$40.

**HOLIDAY LIGHT CELEBRATIONS:** See article *Bring on the Lights*, page 6.

**MOUNTAIN HOLIDAY JUBILEE:** Nov. 26-28, 10am-5pm Fri. and Sat., 3pm Sun. Arts and crafts show offering unique Holiday gifts. Convention Center at Big Bear Lake, corner of Division Dr. & Big Bear Blvd. Tickets: \$3 adults, children under 12 free. (909) 585-3000, www.bigbearevents.com. See article on page 14.

**NUTCRACKER BALLET:** Dec. 3-4 at 8pm, Dec. 5 at 2:15 pm. In concert with the San Bernardino Symphony Orchestra, presented by Inland Dance Theatre. (909) 383-9595.

**ORANGE BLOSSOM HOLIDAY VILLAGE:** Dec. 1, 7, 15, 22, in downtown Riverside, 10am-2pm. Holiday gifts, entertainment and farmer's market. Free. (951) 715-3400, www.orangeblossomfestival.org.

## MINIATURE GOLF

**CASTLE PARK:** 3500 Polk Ave., Riverside. (951) 785-3000.

**FIESTA VILLAGE:** 1405 E. Washington Ave., Colton. Call (909) 824-1111.

**UPLAND BOOMERS:** Miniature Golf Courses, Go Karts, Bumper Boats, Rock Wall, Ferris Wheel, Spinning Tubs, Airplane Ride, Tiny Tot Cars, Bounce House, Two Arcades, Snack Bar & Cafe. 1500

W. Seventh, Upland. Call (909) 946-9555.

## MUSEUMS

**PALM SPRINGS AIR MUSEUM:** November 6, *Thunder Over the Desert*, exhibit 8 Warbirds at the Thermal Regional Airport to celebrate re-dedication of the airport to the Jacqueline Cochran Regional Airport. Free admission to the air show. Nov 11, *Dedication of the Distinguished Flying Cross Monument*, 11am in front of the Air Museum. PSHH Band, special speakers and fly over by the Stearman and B-25. Nov 13, *Air Museum Celebrates 8th Anniversary*. Special activities throughout the day along with flight demonstrations by the P-51, B-25, P-63 and B-17. Nov 20, *Tuskegee Airmen Program*, with special speakers and music. Flight Demonstration of the P-51 and B-25. 745 N. Gene Autry Trail, Palm Springs. Open daily: 10am-5pm. www.PalmSpringsAirMuseum.org. (760) 778-6262.

**PLANES OF FAME:** Nov. 6, 10am, at the Air Museum Planes of Fame at the Chino Airport, historical seminar on flight tests and get the chance to see a Northrop flying wing in action. (909) 597-3722.

**UNIVERSITY OF REDLANDS, PEPPERS GALLERY:** 1200 E. Colton Ave., Redlands, (909) 793-2121 ext. 3660

**THE ASISTENCIA, AN OUTPOST OF THE MISSION SAN GABRIEL:** 10 a.m. to 3 p.m. Tuesdays through Saturdays, 26930 Barton Road, Redlands, free, donations accepted, (909) 793-5402.

**LINCOLN MEMORIAL SHRINE:** houses thousands of volumes on Abraham Lincoln and the Civil War, 1 to 5 p.m. Tuesdays through Sundays, Smiley Park, 125 W. Vine St., Redlands, free, (909) 798-7636.

**MUSEUM OF HISTORY AND ART, ONTARIO:** 225 S. Euclid Ave., Ontario. (909) 983-3198.

**OAK GLEN SCHOOL HOUSE MUSEUM:** noon to 4 p.m. Saturdays, 1:30 to 4 p.m. Sundays 11911 S. Oak Glen Road, Yucaipa, free, (909) 797-1691.

**SAN BERNARDINO COUNTY MUSEUM,** 2024 Orange Tree

Lane, Redlands, \$6, seniors and students \$5, children 5-12 \$4, (909) 307-2669.

**PALM SPRINGS DESERT MUSEUM:** Weekly art workshops. 101 Museum Drive, Palm Springs, (760) 325-0189, [www.psmuseum.org](http://www.psmuseum.org).

**RIVERSIDE MUNICIPAL MUSEUM:** 3580 Mission Inn Ave., Riverside, (951) 826-5273.

**PLANES OF FAME AIR MUSEUM AND JET FIGHTER MUSEUM:** 9 a.m. to 5 p.m. daily, Cal-Aero Field, 7000 Merrill Ave., Chino, \$8.95, children 5-11 \$1.95, (909) 597-3722.

**BELLA GALLERY:** (951) 471-1144.

**CALIFORNIA MUSEUM OF PHOTOGRAPHY:** 3824 Main St., Riverside, (951) 787-4787. [www.cmp.ucr.edu](http://www.cmp.ucr.edu).

**MUSEUM OF HISTORY AND ART:** 225 S. Euclid Ave, Ontario, (909) 983-3198

**STURGES CENTER FOR THE FINE ARTS:** 780 North E St., San Bernardino, (909) 885-2816

**CABAZON CULTURAL MUSEUM:** Exhibits on the past, present and future of the Cabazon Band of Mission Indians, 10 a.m. to 5 p.m. Wednesdays-Saturdays, noon to 5 p.m. Sundays, 84-245 Indio Springs Parkway, Indio, free, (800) 827-2946.

**COACHELLA VALLEY MUSEUM:** 10 a.m. to 4 p.m. Wednesdays-Saturdays, 1 to 4 p.m. Sundays, 82-616 Miles Ave., Indio, \$2, seniors and children 5-12 \$1, (760) 342-6651.

**HEMET MUSEUM:** 11 a.m. to 3 p.m. Tuesdays-Sundays, Santa Fe Depot freight house, Florida Avenue and State Street, Hemet, free, (951) 929-4409.

**LA SIERRA WORLD MUSEUM OF NATURAL HISTORY:** 2 to 5 p.m. Saturdays, Cossentine Hall, La Sierra University, 4700 Pierce St., Riverside, free, (951) 785-2209.

**PALM SPRINGS HISTORICAL SOCIETY'S MCCALLUM ADOBE MUSEUM AND CORNELIA WHITE HOUSE MUSEUM:** noon to 3 p.m. Wednesdays and Sundays, 10 a.m. to 4 p.m. Thursdays through Saturdays, 221 S. Palm Canyon Drive, Palm Springs, \$1, children

12 and younger free, (760) 323-8297.

**CORONA HERITAGE PARK & MUSEUM:** 10 a.m. to 2 p.m. Tuesdays through Saturdays, 510 W. Foothill Parkway, Corona, free, (909) 898-0687.

**EDWARD-DEAN MUSEUM & GARDENS:** 10 a.m. to 5 p.m. Fridays-Sundays, 9401 Oak Glen Road, Cherry Valley, \$3, seniors and students \$2, children younger than 12 free, (909) 845-2626.

**RYAN SCHOOL OF AERONAUTICS MUSEUM:** 10 a.m. to 3 p.m. Wednesdays through Sundays, Ryan Field, 4280 Waldon Weaver Road, Hemet, free, (951) 658-2716.

**SAN JACINTO VALLEY MUSEUM:** noon to 5 p.m. Thursdays through Saturdays, 181 E. Main St., San Jacinto, free, (951) 654-4952.

#### NIGHTLIFE/DINING (FEATURED)

**APPLE ANNIES:** Home of the original Mile High Apple Pie. Located at OakTree Village in Oak Glen. (909) 797-7371.

**BABYLON:** Mediterranean cuisine. Every Friday night live entertainment and belly dancers. \$5 cover charge. 4085 Vine St., downtown Riverside. (951) 784-3033.

**BLUE DIAMOND:** Family restaurant. 2964 Rubidoux Blvd., Riverside. Open 5:30 to 9pm. (951) 788-0450.

**BOSSA NOVA GRILL:** South American cuisine. Located in Riverside at 1690 Spruce St. (951) 781-6682.

**CIAO BELLA:** Authentic Italian cuisine. In Riverside, 1640 Spruce St. (951) 781-8840.

**FLABOB AIRPORT CAFE:** 4130 Mennes Ave., Riverside. Open 6:30am to 3pm. (951) 686-6660.

**IGGY'S ROADHOUSE BAR AND GRILL:** Live bands Fri.-Sun., no cover. Classic rock on Friday, country western Saturdays, Jazz Sundays, 8:30pm to 2am. Thursday karaoke 8:30pm to midnight. 34536 Yucaipa Blvd., Yucaipa. 909.790.5644.

**JAGS:** "New American Grill," serving the finest certified Angus Beef and seafood. Live entertainment Fri.-Sat., 7 pm to closing. Located

See coupon on page 30.

## Tour the Christmas Lights with Carriages by Margaret "Exquisite Horse Drawn Coaches"

951-789-1620

Go online to [www.carriagesbymargaret.com](http://www.carriagesbymargaret.com) and click on Festival of Lights for pricing, reservations and news about our New Wood Street residential tours.



Pick up on Main St. & Mission Inn Ave., Riverside

**Riverside Festival of Lights**

Riverside Festival of Lights Switch-On Ceremony  
November 26, 2004, 6:15 p.m.  
A FREE Fun-filled Holiday Tradition!  
Downtown Aglow begins  
Saturday, November 27th

For Information Call (951) 781-5896  
or visit [www.RiversideDowntown.org](http://www.RiversideDowntown.org)

**RIVERSIDE DOWNTOWN PARTNERSHIP**

Photo by Michael Alderman

## Tand D Scooters



Mobility Scooters  
Gas Scooters  
Electric  
Pocket Bikes  
Go Peds

Let us help you get your Scooter Adventure Started!

**Financing and Insurance Available!**

(951) 688-6683

[www.tanddscooters.com](http://www.tanddscooters.com)

6670 VanBuren Blvd., Riverside, CA 92503

**ORANGE BLOSSOM HOLIDAY VILLAGE**

Join us Wednesday afternoons  
December 1, 7, 15, & 22

Downtown Historic Riverside  
10 a.m. - 2 p.m.

- Holiday Gifts
- Live Entertainment
- Farmer's Market

Free to the Public

951-715-3400  
[www.OrangeBlossomFestival.org](http://www.OrangeBlossomFestival.org)



## The Pomona Valley Air Fair

January 8-9, 2005

Tickets:  
 • \$5 adults • \$3 kids 5-13  
 Preschoolers free

Cable Airport, 1749 W. 13th St.,  
 Upland  
**(909) 238-4508**

in Riverside at 1725 Spruce St.  
 (951) 683-1550.

**ROMANO'S:** Live Jazz Friday and Saturday nights at Romano's Restaurant, 5225 Canyon Crest Dr., Riverside. From 9pm-12am, \$5 cover. (951) 781-7662.

**TOAD IN THE HOLE:** Traditional English prime rib, wine cellar, full bar, live music/piano bar, patio dining, banquet facilities and catering. Located in downtown Riverside at the Main St. Mall, 3737 Main St. (951) 369-8792.

### RACING

**ADAMS KART TRACK:** For ages 5 and up. Pro shop, kart track, racing school. 5292 24th St. in Riverside. (951) 686-3826. www.adamskarttrack.net.

**CALIFORNIA SPEEDWAY:** 9300 Cherry Ave., Fontana. Ticket office: (800) 944-7223 (RACE). www.californiaspeedway.com.

**MORAN RACEWAY:** Drive high-performance go-carts. Includes driving schools, corporate events and rentals. (909) 522-9302, www.moranraceway.com.

### SNOW AND SKI

**ALPINE SLIDE AT MAGIC MOUNTAIN:** A full service family favorite that's also home to the signature bobsled-like ride of the same name. The Alpine Slide lets riders experience Olympic-like action as they negotiate sleds along a quarter-mile track with banked turns and long straightaways. Getting to the top is a snap with Magic Carpet uphill lifts. Guests just step onto the moving conveyor belt with their inner tubes for an uphill ride that has them back on the snow. The Alpine Slide at Magic Mountain is located on the boulevard in Big Bear Lake, 1/4 mile west of the Village shopping area, home to 60 specialty stores. 800 Wild Rose Lane. Call (909) 866-4626.

**BEAR MOUNTAIN:** It has a vertical drop of 1,700 feet, 11 chair lifts and 27 trails from beginner to advanced. With their new frequent-skier program, a free day of skiing can be earned with three midweek skiing days. Bear Mountain is on

Moonridge Road in Big Bear Lake. (909) 585-2519.

**MOUNT BALDY:** Just north of Upland and Ontario, Mount Baldy has four lifts serving four mountains on more than 400 acres of terrain and has a 2,100-foot vertical drop. Mount Baldy Village is off Interstate 10 at Mountain Avenue, north of Upland. (909) 981-3344.

**SKI SUNRISE:** Located in Wrightwood near Mountain High Ski Area, this neighborhood resort has one quad chair and two pull-man lifts on 100 acres of terrain, with an 800-foot vertical drop. About half the runs are intermediate and the rest are either advanced or beginner. Ski Sunrise is in Wrightwood along Highway 2. (619) 249-6150.

**SNOW SUMMIT:** Extensive renovations at Snow Summit include a new high-speed quad chair, the All-Mountain Xpress, which carries skiers more than a mile to the 8,200-foot peak. There are 12 chair lifts and an 1,175-foot vertical drop with beginner through expert runs on 230 skiable acres and 18 miles of runs. Snow Summit is at 880 Summit Blvd., Big Bear Lake. (909) 866-5766.

**SNOW VALLEY:** Located a few miles from Running Springs, Snow Valley has 14 lifts accessing 36 trails on 235 acres of terrain. The largest ski area in the San Bernardino Mountains, with a peak elevation of 7,841 feet, the resort offers a 1,141-foot vertical drop. Also features children's ski center and Alpine dining room. Snow Valley is 5 miles east of Running Springs on Highway 187. (909) 867-2751.

**SILVERWOOD LAKE STATE RECREATION AREA:** I-15 north to the Silverwood/Palmdale exit, then right at the stop sign and follow Highway 138 to the park.

**HUMBER PARK:** About 2 1/2 miles north of the Idyllwild Forest Ranger Station in the San Jacinto Mountains. Call (909) 659-2117.

**SNOWDRIFT:** Highway 18, 4 miles above Running Springs and 1 mile below Snow Valley Ski Resort.

### THEATER/ BALLET/ OPERA

**BEN BOLLINGER'S CANDLELIGHT PAVILION DINNER THEATER:**

**Sumptuous comfort & elegance for:**

- Weddings
- Birthdays
- Anniversaries
- Quincenieras
- Team Parties
- Special Occasions

Custom decorations for your event

Optional fully stocked bar

Starlight ceilings

We offer the "Ultimate Party Buses" which give you the feel of elegance and comfort of a private jet.

Up to 22 people with Full Entertainment Center

**1-888-STARR-99**  
 www.starr-al.com

## VIDEO AND FILM PRODUCTIONS

music video  
 multimedia  
 dvd cd-rom  
 broadcast  
 event video  
 duplication  
 film transfer

**milestone media**  
 5997 brockton ave. #c2 riverside, ca. 92506  
**951-788-5880 · film2video.com**

The Inland Dinner Theatre  
 Presents Our  
 Production of Tchaikovsky's

# Nutcracker Ballet

In concert with the  
 San Bernardino Symphony Orchestra  
 Frank Fetta, Maestro

**Fri. Dec. 3, 8pm**  
**Sat. Dec. 4, 8pm**  
**Sun., Dec. 5, 2:15pm**

Tickets: \$18, \$25, \$30

**CALIFORNIA THEATRE**  
 213 Central Mall #D  
 San Bernardino, CA 91781  
 (909) 383-9191  
 (909) 383-0909 Fax

**OUR TOWN**  
 213 Central Mall #D  
 San Bernardino, CA 91781  
 (909) 383-9191  
 (909) 383-0909 Fax

Dinner theater. (909) 626-1254. 455 Foothill Blvd., Claremont.

**CALIFORNIA BAPTIST UNIVERSITY WALLACE THEATER:** *The Miracle Worker*, Nov. 5-6, 8-10pm. (951) 343-4319.

**CHINO COMMUNITY THEATRE:** 13123 Seventh St., Chino. 909-590-1149. www.chinocommunitytheatre.org.

**COMMUNITY ARTS THEATER SOCIETY:** "A Funny Thing Happened On The Way To The Forum," Nov. 12, 13, 14, 17, 19, 20, 21, 23, 26, 27. At the Big Bear Performing Arts Center, 39707 Big Bear Boulevard. (909) 866-4970.

**GROVE THEATRE:** Located in historic downtown Upland. (909) 920-4343, www.grovetheatre.com.

**LASIERRA UNIVERSITY DRAMA PRODUCTIONS:** (909) 785-2016.

**LIFEHOUSE THEATER:** "Sherlock Holmes Faces Death," through Nov. 21. Holme's faces his nemesis, Professor Moriarty. "A Little House on the Prairie Christmas," Dec. 4-30. An old-fashioned frontier Christmas. Reservations may be made by calling (909) 335-3037, ext. 21. www.lifehousetheater.com The theater is located at 1135 N. Church St. in Redlands.

**MCCALLUM THEATRE:** Tickets: (760) 340-ARTS. www.mccallumtheatre.com. 7300 Fred Waring Dr., Palm Desert.

**MURRIETA REPERTORY THEATRE:** At the Murrieta Community Center, 41810 Juniper St., in Old Towne Murrieta. (951) 600-7273. www.murrietarep.org.

**NUTCRACKER BALLET:** Dec. 3-4 at 8pm, Dec. 5 at 2:15 pm. In concert with the San Bernardino Symphony Orchestra, presented by Inland Dance Theatre. (909) 383-9595.

**PERFORMANCE RIVERSIDE:** *Grease*, Nov. 5, 6, 12, 13, 19, 20, at 8pm, Nov. 7, 13, 21 at 2pm. Tickets \$25, \$28 and \$33. At Riverside Community College, Landis Auditorium. For further information or to purchase tickets call the Performance Riverside box office at (951) 222-8100 or www.performanceriverside.org.

**RAMONA BOWL:** Season tickets \$125. 27400 Ramona Bowl Rd., Hemet. (800) 645-4465.

www.ramonabowl.com.

**REDLANDS FOOTLIGHTERS:** For information, call (909) 793-2909 or visit www.redlandsfootlighters.org.

**RCC OFF-BROADWAY PLAY SERIES:** *Closer Than Ever*, Nov. 19-20, 8pm, Nov. 20-21, 2pm. General admission \$15, students \$10. (951) 222-8100.

**RIVERSIDE LITTLE OPERA:** Held at All Saints Episcopal Church in Riverside. (951) 683-8466. www.riversidelittleopera.com.

**SAN BERNARDINO CIVIC LIGHT OPERA:** California Theatre of Performing Arts, 562 Fourth St., San Bernardino. For information call (909) 889-6564.

## THEME PARKS

**CASTLE AMUSEMENT PARK:** 3500 Polk St., Riverside. (951) 785-3000.

**DISNEYLAND/DISNEY'S CALIFORNIA ADVENTURE:** 1313 Harbor Blvd., Anaheim, CA (714) 781-4565

**FIESTA VILLAGE:** Has two miniature golf courses, race cars, the largest batting cage facility in Southern California, amusement rides, arcade and waterpark. 1405 E. Washington St., Colton, (909) 824-1111.

**KNOTTS BERRY FARM:** 8039 Beach Blvd., Buena Park. (714) 220-5200. www.knotts.com.

**LEGOLAND CALIFORNIA:** One Legoland Dr., Carlsbad, CA (877) 534-6526

**OAKTREE VILLAGE:** 39490 Oak Glen Rd., in Oak Glen. Open every day, with entertainment every weekend. Artisans, pony rides, animal park, trout fishing, and more. (909) 797-4020. www.oaktree-village.com.

**PHARAOH'S LOST KINGDOM ADVENTURE PARK:** 1101 N. California, Redlands, CA, 92374. (909) 335-7275. pharaohslostkingdom.com.

**SAN BERNARDINO COUNTY REGIONAL PARKS:** (909) 38-PARKS.

**SAN DIEGO ZOO:** 2920 Zoo Dr., San Diego, CA (619) 634-3153

**SAN DIEGO WILD ANIMAL PARK:** 15500 San Pasqual Vly., Escondido, CA, (760) 767-8702

**SIX FLAGS MAGIC MOUNTAIN:** 26101 Magic Mountain Parkway, Valencia. (661) 255-4111.

**SCANDIA THEME PARK:** I-15 between I-10 and Hwy. 60, Ontario, (909) 390-3092

**UNIVERSAL STUDIOS HOLLYWOOD:** 100 Universal City Plaza, Universal City. Directions: Take I-10 West to Highway 101 North to Universal Studios Boulevard and follow the signs. (818) 622-3801 or (818) 508-9600. universalstudios.com.

## WINERIES

**BAILY VINEYARD & WINERY:** 33440 LaSerena, Temecula, (951) 676-9463.

**CALLAWAY VINEYARD & WINERY:** 32720 Rancho California Road, Temecula, (951) 676-4001.

**CILURZO VINEYARD & WINERY:** 41220 Calle Contento Road, Temecula, (951) 676-5250.

**FILSINGER VINEYARDS & WINERY:** 39050 De Portola Road, Temecula, (951) 302-6363.

**GALLEANO WINERY:** Offering personalized wine bottles and gift baskets. Tasting room open daily. Tours Sat. and Sun. or by appt. 4231 Wineville Road, Mira Loma (951) 685-5376. www.galleanowinery.com.


**J. FILIPPI VINTAGE CO.:** 2803A E. Guasti Road, Guasti (909) 390-6998; 11211 Etiwanda Ave., Fontana (909) 428-8630; 12467 Base Line, Rancho Cucamonga, (909) 899-5755.

**THORNTON WINERY:** 32575 Rancho California Rd, Temecula. (951) 699-0099.

**HART WINERY:** 41300 Avenida Biona Road, Temecula, (951) 676-6300.

**KEYWAYS VINEYARD & WINERY:** 37338 De Portola Road, Temecula, (951) 676-1451.

**MAURICE CARRIE WINERY:** 34225 Rancho California Road, Temecula, (951) 676-1711.

**MOUNT PALOMAR WINERY:** 33820 Rancho California Road, Temecula, (951) 676-5047. 

Reach more than 60,000 Inland Empire readers at more than 450 locations throughout the twin counties!

To advertise in the

**Inland ENTERTAINMENT REVIEW**  
The Inland Empire's Guide to Fun

call (909) 686-7575



Inland Entertainment Review



(909) 795-TREE (8733)  
www.liveoakcanyon.com

**2 FREE RIDES  
ON BOUNCERS  
OR SLIDES**

Not valid with other offers, limit one per customer per visit, expires 12/15/04

Inland Entertainment Review

**CHRISTMAS CONIFERS II**

located on Reche Canyon Rd. & Westwood, under the powerlines, in Colton

(909) 824-6489

**\$3 OFF**

Not valid with other offers, limit one per customer per visit, expires 11/30/04



Inland Entertainment Review

**\$5 off any  
fishing trip**  
(adult fare)

**DAVEY'S LOCKER, NEWPORT BEACH**

(949) 673-1434 • www.daveyslocker.com

Not valid with other offers, limit one per customer per visit, expires 11/30/04

Inland Entertainment Review

**The Wickerd Farm**

26852 Scott Rd., Menifee

(951) 286-8289

**\$3 OFF CHRISTMAS TREE  
OR WREATH**

Not valid with other offers, limit one per customer per visit, expires 11/30/04

Inland Entertainment Review

**20th Annual  
Mountain Holiday Jubilee**

November 26 - 28, 2004

Located at the Convention Center at Big Bear Lake Corner of Big Bear Blvd. and Division Drive

Please present coupon at the door

909-585-3000

www.bigbearevents.com

**2 FOR 1 ENTRY ON  
SUNDAY, NOV. 28**

Not valid with other offers, limit one per customer per visit, expires 11/30/04

Inland Entertainment Review

**20th Annual  
Mountain Holiday Jubilee**

November 26 - 28, 2004

Located at the Convention Center at Big Bear Lake Corner of Big Bear Blvd. and Division Drive

Please present coupon at the door

909-585-3000

www.bigbearevents.com

**2 FOR 1 ENTRY ON  
SUNDAY, NOV. 28**

Not valid with other offers, limit one per customer per visit, expires 11/30/04

**Arrive N Drive**

**ADAMS KART TRACK**

**\$5.00 each off your 1<sup>st</sup> Race**

**This is where you and your friends can get the most "bang" for your buck!**

**Come out, bring a friend and both of you can Race for \$20.00!**

(Offer valid through 11/30/04 MUST bring coupon • one per customer per visit)

**Arrive N Drive**

**ADAMS KART TRACK**

**\$5.00 each off your 1<sup>st</sup> Race**

**This is where you and your friends can get the most "bang" for your buck!**

**Come out, bring a friend and both of you can Race for \$20.00!**

(Offer valid through 11/30/04 MUST bring coupon • one per customer per visit)

Inland Entertainment Review

**Carriages by Margaret**

*"Exquisite Horse Drawn Coaches"*

951-789-1620

Pick up on Main St. & Mission Inn Ave., Riverside

**\$5 OFF 1/2 & 1  
HOUR TOURS**

Not valid with other offers, limit one per customer per visit, expires 11/30/04

Inland Entertainment Review

**Carriages by Margaret**

*"Exquisite Horse Drawn Coaches"*

951-789-1620

Pick up on Main St. & Mission Inn Ave., Riverside

**\$5 OFF 1/2 & 1  
HOUR TOURS**

Not valid with other offers, limit one per customer per visit, expires 11/30/04

# ADAMS

KART TRACK

5292 24th STREET RIVERSIDE, CA 92509

# 951.686.3826

ADAMSKARTTRACK.COM

## FIND THE RACER INSIDE.

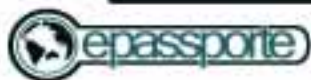


Join the thousands of people that have experienced the thrill of racing for the first time on the world famous Adams Kart Track—the only dedicated outdoor Arrive & Race kart track in Southern California. Don't settle for slow days in average karts. Break away from boredom at Adams Kart track while accelerating up to 50 mph only 2 inches off the ground!

**Race-A-Kart**  
**Arrive & Race program**  
**provides you with**

- True Race Format: Practice, Qualify, Race
- Top of the line Safety Equipment
- Delicious food from our on-site Cafe
- Full service Pro-Shop
- Racing Nightly 5pm-11pm

# \$10 OFF



# 951.686.3826

**THE WINNER'S PREPAID VISA**

Get your ePassporte Prepaid Visa at Adams Kart Track! Pay with your ePassporte Visa and receive: \$10.00 off your 1st Race\*  
\$5.00 off your Future Races\*\*

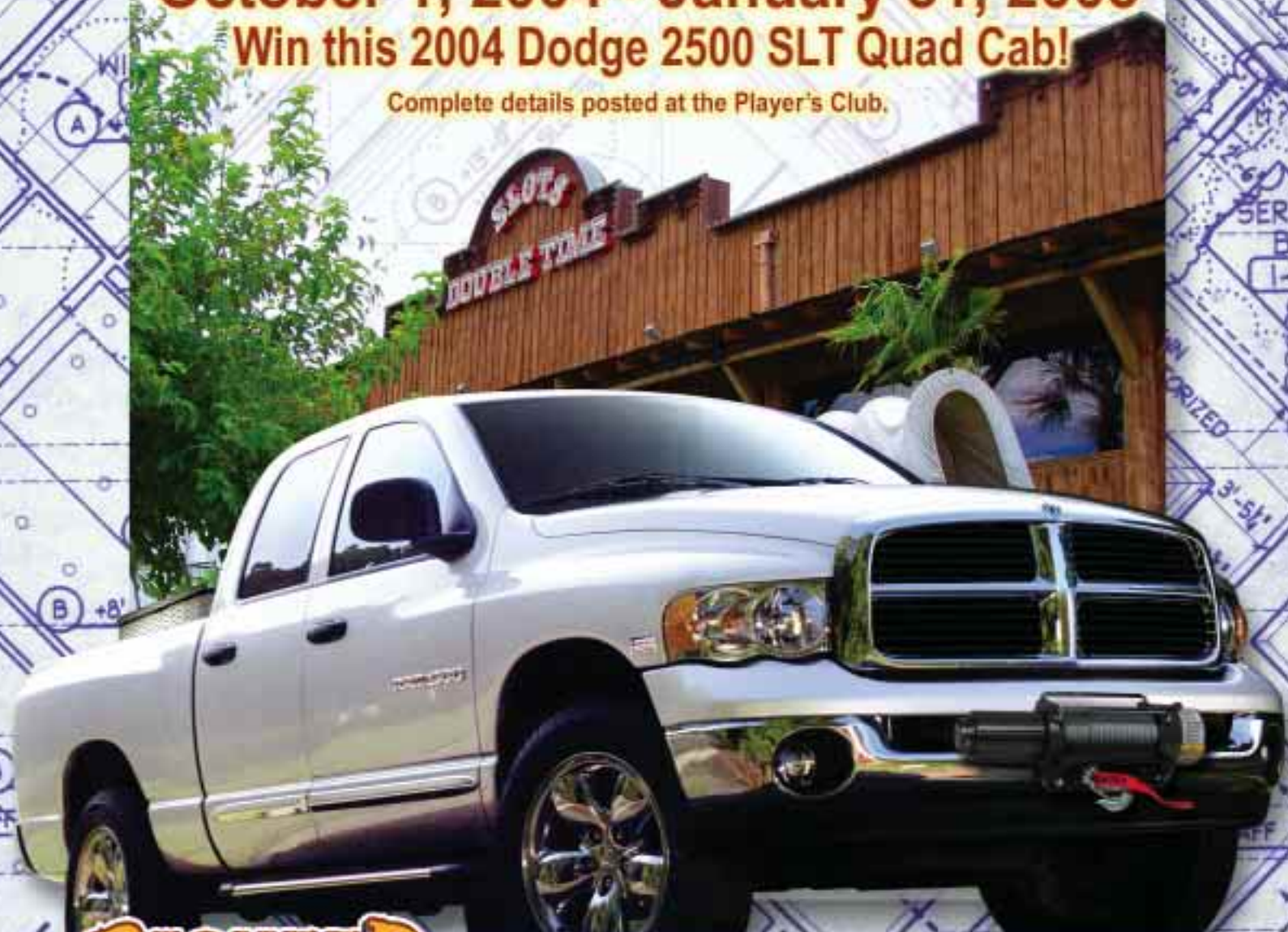
\*With purchase of ePassporte Visa Electron card. \*\*Discount applied when purchasing future races with ePassporte Visa Electron card.

# HARD HAT HORSEPOWER GIVEAWAY

October 1, 2004 - January 31, 2005

Win this 2004 Dodge 2500 SLT Quad Cab!

Complete details posted at the Player's Club.



**PIONEER**  
HOTEL & GAMBLING HALL  
LAUGHLIN, NEVADA

2200 South Casino Drive • Laughlin, Nevada 89029  
(702) 298-2442 • (800) 634-3469  
[www.pioneerlaughlin.com](http://www.pioneerlaughlin.com)