

THEATER • ARTS • EVENTS • FAMILY FUN • CASINOS **FREE**

Inland

ENTERTAINMENT

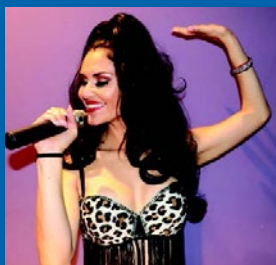
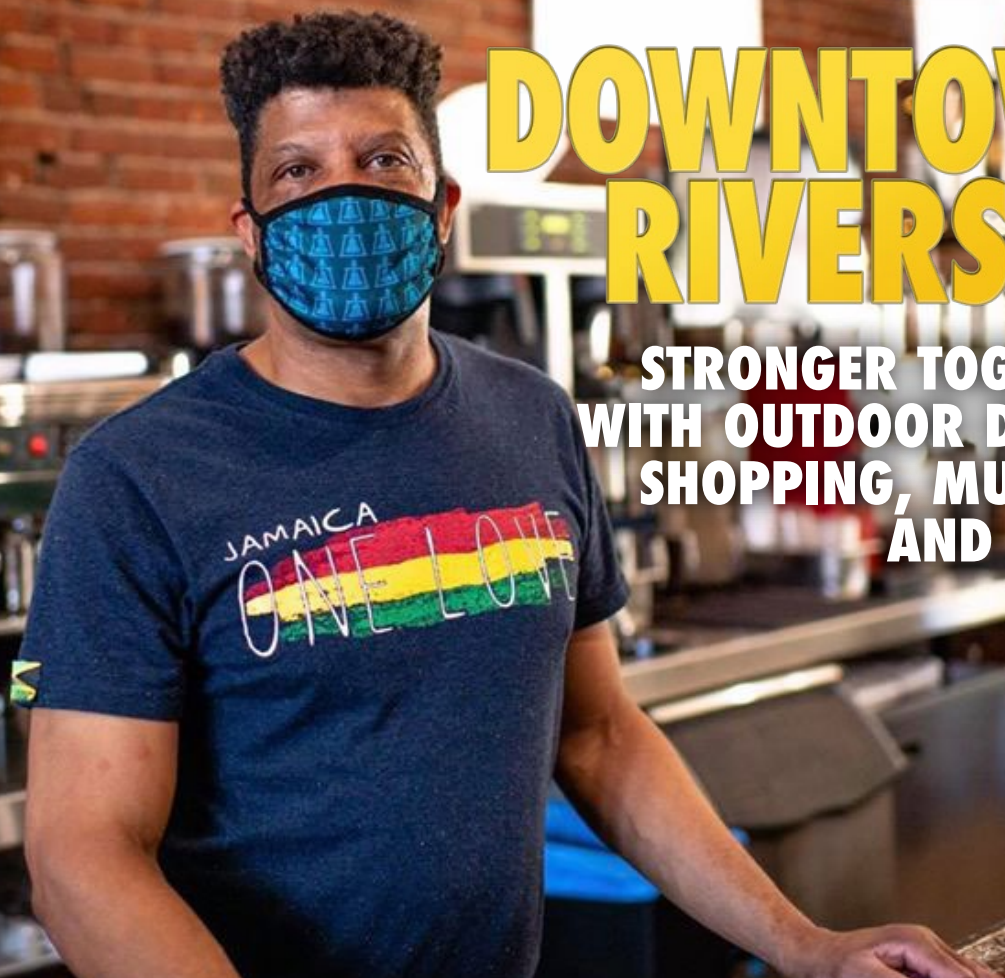
The Inland Empire's Guide to Fun

REVIEW

August, 2020

DOWNTOWN RIVERSIDE

**STRONGER TOGETHER,
WITH OUTDOOR DINING,
SHOPPING, MUSEUMS
AND MORE!**



**Pala's Outdoor
Starlight
Concert Series**



**Big Bear
Alpine Zoo Is
Open**



**Patio Dining At
Canyon Crest
Towne Centre**



**Racing Action
At Big Bear
Speedway**



**Temecula
Rod Run
Cruise Night**

Starlight Outdoor Concert Series

SUPERSTAR IMPOSTORS

SUMMER TRIBUTE BANDS

FRIDAY NIGHT CONCERTS



AUGUST 7
DSB
TRIBUTE TO JOURNEY



AUGUST 14
ONE DROP REDEMPTION
BOB MARLEY TRIBUTE



AUGUST 21
YACHTLEY CREW
TITANS OF SOFT ROCK



AUGUST 28
WAYWARD SONS
TRIBUTE TO 80'S ROCK

\$10* General Admission | Doors Open 7pm | Showtime 8pm

FUNKY FUNK & DANCE MOVES

BIG GROOVES

GET DOWN

SATURDAY NIGHT CONCERTS



AUGUST 15
THE FAMILY STONE



SEPTEMBER 5
ROSE ROYCE



SEPTEMBER 19
WAR
GENERAL ADMISSION \$30

\$10* General Admission | Doors Open 7pm | Showtime 8pm

Domingos de Musica y Baile

SUNDAY NIGHT CONCERTS



AUGUST 2
CORAZÓN DE MANÁ
MANA TRIBUTE



AUGUST 16
DREAMING OF YOU
TRIBUTE TO SELENA



AUGUST 23
VIVA SANTANA
SPECIAL GUEST RAIN BISOU



SEPTEMBER 6
MARIACHI DIVAS

\$10* General Admission | Doors Open 3pm | Showtime 4pm

For tickets visit the Pala Casino Box Office or call (800) 514-3849.

*Privileges Club members get \$5 Back in Added Play at show registration.
Must be 21 or older to attend.

Mention Offer Code **EntertainMe** and receive an additional \$5 in Added Play. Offer valid Sunday – Thursday, August 6 – August 30.

*One offer each month per cardholder.

INSIDE THIS ISSUE

Reach New Heights At The Exciting Big Bear Ropes Course

PAGE 5

Stronger Together: Support Downtown Businesses

PAGE 7

Big Bear Alpine Zoo Now Open To The Public

PAGE 9



Enjoy Patio Dining At Canyon Crest Towne Centre

PAGE 11

Pala's Starlight Outdoor Concert Series August Lineup

PAGE 13

Escape The Heat At Alpine Slide

PAGE 15



Get On The Speedway

PAGE 16

Temecula Rod Run Cruise Night Only

PAGE 18

What To Do

PAGE 19

August, 2020

Editor In Chief Tana Pigeon
 Publisher Word Mill Publishing

WWW.INLANDREVIEW.COM

Inland Entertainment Review is published monthly and can be found online at www.inlandreview.com, as well as on social media through Twitter, Facebook, and Instagram, reaching about 23,000 people locally in Riverside and San Bernardino Counties.

Inland Entertainment Review brings you the best in Inland Empire Entertainment.

Inland Entertainment Review is not responsible for incorrect pricing or information listed or for loss or damage of unsolicited materials. Opinions expressed by writers and advertisers are their own and do not necessarily represent those of the publisher. Redistribution in whole or in part is prohibited.

Copyright 2020 by Word Mill.
 All rights reserved.

CONTACT US

For mail correspondence:
Inland Entertainment Review
 5055 Canyon Crest Dr.,
 Riverside, CA 92507

Advertising or Editorial inquiries
 (951) 686-7575

IER@InlandReview.com
www.InlandReview.com

Word Mill
 graphic design

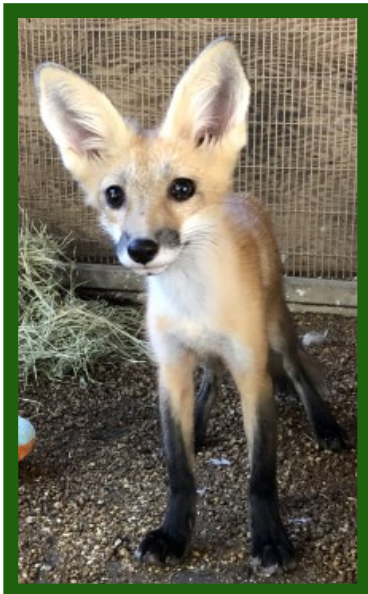
Word Mill Publishing,
 creating quality publications since 1992



ABOUT THE COVER

DISCOVER DOWNTOWN RIVERSIDE'S restaurants and shops that are open for outdoor dining and business.

Read about it on page 7.



*Connecting people to wildlife through
rescue, rehabilitation, and education*

Open Daily (weather permitting)
43285 Goldmine Dr., Big Bear Lake, CA
909-584-1299 / www.BigBearAlpineZoo.org

Visit Our Website at
www.BigBearAlpineZoo.org
for more information



Reach New Heights At The Exciting Big Bear Ropes Course

A state-of-the-art aerial adventure in the mountains

Big Bear Lake introduced a new recreation feature that reaches new heights with a high-octane obstacle course that towers 35 feet off the ground! Big Bear Ropes Course is a state-of-the-art aerial adventure designed to give families an exhilarating yet challenging experience all bundled into one.

Big Bear Ropes Course is far from an ordinary family day at the park. Instead, this two-story obstacle course that spires high above Big Bear allows participants of varying ages, from young children to adult, to face an array of challenges and features.

There are a variety of suspension bridges, some with wide-open gaps, some with nothing but two-inch round cables to scramble across, yet another that overhangs on a curving structure with dangling ropes to grasp onto.

All in all there are 37 different obstacles on this towering two-level ropes course. There is even an airborne element added to the equation for those who wish to experience the joy of flying. The Sky Rail Zipline stretches 80 feet and bananas out onto a ledge, enhancing the overall excitement.

“Nothing but thrills! We’re bringing a whole new excitement to Big Bear. Think American Ninja Warrior or The Titan Games, but on a family-friendly level that is especially designed for kids,” said Big Bear Ropes Course Manager Shannon Wilson. “Best of all, our ropes course is engineered to ensure the highest standards of safety.”


While some features teeter and other features wobble, participants need not fret about falling, because they’re at the utmost level of protection. Each participant is fully secured on Big Bear Ropes Course’s advanced safety system, which includes a five-point, full-body harness connected to a safety line, with a slider puck that is inserted into a continuous belay track system. Each participant is fully secured at all times from start to finish. The slider puck can only be inserted or taken out of the track by a certified operator at the entrance and exit of the ropes course.

There are certified operators on the ropes course at all times in case any participant requires assistance.

Big Bear Ropes Course is normally open all-year round (weather-dependent). Participants must be at least 42” tall. Participants 42” to 48” must be accompanied by an adult 18 years or older. Maximum weight for an individual cannot exceed 300 lbs.

The cost is \$12 per person, per 20 minute session. Guests are encouraged to call ahead for operating hours, as operating hours change throughout the year. Big Bear Ropes Course is located at 42825 Big Bear Blvd. (the same location as Big Bear Speedway / Big Bear Snow Play).



For more information call (909) 585-0075 or visit BigBearRopesCourse.com. 

Alpine Slide at Magic Mountain

**NEW SOARING
EAGLE RIDE**



**YEAR
ROUND
FAMILY
FUN**



**ALPINE SLIDE
1/4 Mile Track**



GO-KARTS



**At Alpine
Slide**

**You only pay if
you play!**

**Video Games
Snack Bar &
Old Fashioned
Ice Cream
Counter**

**WATER
SLIDE**

**All
Summer
Alpine Water Slide**

Take a ride in the crystal blue
waters. Turning and banking on
the way to the 3 1/2' deep
pool of inviting water.



909-866-4626

HOURS:

Sunday - Thursday 10am - 6pm

Friday & Saturday 10am - 9pm

www.alpineslidebigbear.com

Stronger Together

Support Downtown Businesses



DOWNTOWN EATERIES: *Heroes Restaurant.*



DOWNTOWN EATERIES: *Fufus at the Food Lab.*

Downtown Riverside may not be fully open to entertain and serve you but certain restaurants are offering outdoor dining, while a number of businesses are open and offer delivery, pick-up and takeout. All customers and patrons are asked to wear face coverings and observe social distancing both in and outside of establishments.

OUTDOOR DINING

You can enjoy outdoor dining with specialty cocktails at Fire Up Grill, The Lobby, and Mezcal/Palenque, along with great food at ProAbiton, Retro Taco, and Mario's Place. For Mexican food, try Tio's Tacos, Taco Station, or Dona Timos. If you prefer vegetarian/vegan – try Plant Power with drive-through.

SHOPPING

If you need a shopping fix - Sweet Vintage Décor, Salvaged Treasures, and Downtowne Bookstore can fill that need. Perennial favorites Mrs. Tiggy Winkles

and Mission Galleria are also open. Treat yourself while supporting them and other downtown businesses.

MUSEUMS AND MORE

Many of downtown's attractions and amenities will not open until the fall or later under State guidance. You can still enjoy downtown museums and cultural institutions through virtual performances, exhibits, and classes. With no geographical limitations with virtual tours – the world is the limit! Once they can reopen fully, they'll be waiting for your visit with all Downtown has to offer.

It is critical to slow, if not stop, the spread of the virus. They urge everyone to "Mask Up, Riverside. It's easy. It works. It's required." **IER**

FOR MORE INFORMATION

FOR MORE INFORMATION VISIT
WWW.RIVERSIDEDOWNTOWN.ORG AND SIGN UP
FOR THEIR MONTHLY EVENTS NEWSLETTER.
ALSO FIND THEM ON FACEBOOK.

CELEBRATING MORE THAN 40 YEARS!

Canyon Crest Towne Centre

We're more than a shopping centre!



Businesses & Restaurants Are Open

Come and enjoy outdoor dining in our beautiful patio areas!

**Thank you for
supporting
our merchants
during this time!**

Please remember
to wear a mask and
engage in social
distancing.

5225 Canyon Crest Drive, Riverside, CA 92507
951.686.1222

For more information on our wonderful businesses and activities, please check our website at

www.shopcanyoncrest.com

Big Bear Alpine Zoo Now Open To The Public

The Zoo Has Been Saving Wildlife And Connecting A Mountain Community To Wilderness Since 1959



The Big Bear Alpine Zoo reopened to the public on June 12. The new Zoo hours are 10am to 4pm. Facemasks are required and physical distancing is strongly encouraged for all visitors.

The Big Bear Alpine Zoo got its start as the result of a local fire. Back in 1959, a black bear and two bobcats were rescued, treated and given a permanent home after it was deemed they were too injured to be returned to the wild. Since then, Big Bear Alpine Zoo has made it part of their mission to be a mountain facility with a multifaceted purpose.

A zoo spokesperson summed it up, “We rescue animals who could not survive on their own in the wild. We rehabilitate injured, orphaned, or sick animals and release them back into the wild as healthy animals. More importantly, we educate the public about the positive and negative roles that humans play in our interaction with nature.”

Throughout the year, the Big Bear Alpine Zoo receives orphaned, sick, or injured wildlife. Often, these animals are too compromised to survive in the wild on their own; the direct result of negative human impact.

“Our primary goal is to help these animals achieve a state of independence so that they

can survive independently in the wild,” the spokesperson added.

Unreleasable animals take on a new role becoming ambassadors and helping to connect the public to wildlife. “Our ambassadors help us to educate the public about the uniqueness of their species and habitat. This is where we emphasize that the good that we do as a rescue and rehab facility cannot be achieved alone. We rely on partnerships in mountain stewardship.”

As a sky island, Big Bear maintains several unique species not seen at sea level. Cisneros explained, “a natural disaster could have a catastrophic effect on the population of Humboldt’s flying squirrels here in Big Bear. Our goal is to introduce our guests to this cute, adorable, flagship species so that our guests will join us in making a difference for wildlife and wild places.”

A trip to the zoo in Big Bear will expose you to many majestic animals native to our mountain, and a few others like snow leopards, snowy owl, and arctic fox that are native to other alpine climates.

If you plan on visiting the zoo during the summer months, you may be fortunate to visit the zoo’s brand new 5.5-acre facility. With an expected opening date by the end of 2020, the

zoo will boast a modern design with more space for the animals, emphasizing both maximum animal welfare and maximum guest experience.

If you want to know more about the facility and the animals in their care, check out the website at bigbearzoo.org. 



**BIG BEAR
ALPINE ZOO**

The Big Bear Alpine Zoo is operated and owned by the Big Bear Valley Recreation and Park District, a Special District of the County of San Bernardino. The zoo is open daily from 10am through 4pm.

Located at 43285 Goldmine Drive, Big Bear Lake, the zoo is right across the street from Bear Mountain Ski and Board Resort.

Each day at noon there is an animal presentation done by one of their keepers and three animal enrichment talks at 1pm, 2pm, and 3pm.

GENERAL ADMISSION

Adults 10-59 \$12

Children 3-9 \$9

Military active duty or retired with ID \$9

Seniors 60 and over \$9

Children 2 and under Free

Support Downtown Businesses

Order by phone
or online for
delivery, pick-up,
or takeout.



Thank you for helping to keep us healthy. Downtown Riverside may not be fully open to entertain and serve you, but a number of businesses are open for delivery, pick-up, and takeout, while certain restaurants are offering outdoor dining. Treat yourself, while supporting them. And once we can reopen fully, we'll be waiting for your visit with all Downtown has to offer.



3666 University Ave., Ste. 100 951.781.7335
www.RiversideDowntown.org


FIND US ON

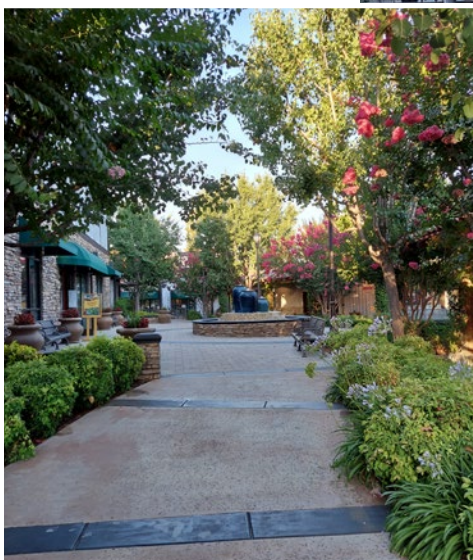


Sign Up for our monthly
Events Newsletter at
RiversideDowntown.org

Enjoy Patio Dining At Canyon Crest Towne Centre

Canyon Crest Towne Centre in Riverside offers a lovely destination for outdoor, patio dining. Businesses and restaurants are open at the Centre, with a wide variety to choose from. Canyon Crest Towne Centre is located at 5225 Canyon Crest Drive, in Riverside. For more information, call (951) 686-1222 or go online to www.shopcanyoncrest.com.

Located near UCR and the Canyon Crest neighborhood, Canyon Crest Towne Centre, celebrating more than 40 years, provides a great family atmosphere, and invites you to visit and enjoy its ambience -- Always Something Happening at Canyon Crest Towne Centre. It's More Than a Shopping Centre! 



CANYON CREST TOWNE CENTRE INFORMATION

For more information, visit www.shopcanyoncrest.com or call (951) 686-1222



**NEED SPEED?
GO KARTING!**

909-585-0075

**Get Your
Race On!**

Up to 30 MPH

Experience the thrill of straight
aways and tight turns

**42825 Big Bear Blvd.
Big Bear Lake**

(Located 3 miles east of the
Alpine Slide, next to Motel 6)

HOURS:

Sunday - Friday 10am - 6pm

Saturday 10am - 9pm

www.bigbearspeedway.com

**S-Curves
Hairpin Turns
Fifth-of-a-Mile
Course**



**Real Gear...
Real Track...
REAL
Racing!**



**NEW
State-of-the-art
Ropes Course**

**2 STORIES TALL
37 OBSTACLES
INCLUDING SKY RAIL™
ZIPLINE**



PALA'S STARLIGHT OUTDOOR CONCERT SERIES

AUGUST LINEUP

Pala Casino Spa & Resort continues shows at its new outdoor concert series events in the Starlight Theater with Superstar Impostors tribute bands on Friday nights, Funky Funk & Get Down on Saturday nights, and Domingos de Musica y Baile on Sunday nights.

All shows will be held outdoors at the Starlight Theater, guests must be 21 years of age or older to attend. Admission is \$10 and guests who sign up for or have a players card will receive \$5 back in Added Play (\$5 Added Play valid the day of event only). Doors open 1 hour prior to start of show.

Guests will be asked to wear facial coverings and practice safe social distancing.



THE FAMILY STONE: *Performing Aug. 15.*

UPCOMING SCHEDULE OF SHOWS

Superstar Impostors

Select Fridays at 8pm

Aug. 7 - DSB (tribute to Journey)

Aug. 14 - One Drop Redemption (Bob Marley tribute)

Aug. 21 - Yachtley Crew (titans of soft rock)

Aug. 28 - Wayward Sons (tribute to 80's rock)



Funky Funk & Get Down

Select Saturdays at 8pm

Aug. 15 - The Family Stone

Sept. 5 - Rose Royce

Sept. 9 - War



Domingos de Musica y Baile

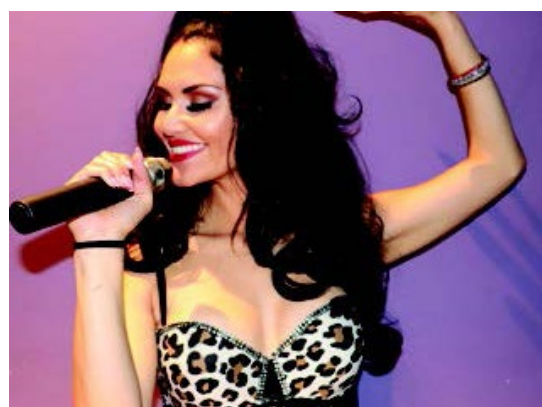
Select Sundays at 4pm

Aug. 2 - Corazón De Maná (Mana tribute)

Aug. 16 - Dreaming of You (Selena tribute)

Aug. 23 - Viva Santana (special guest Rainbisou)

Sept. 6 - Mariachi Divas



DREAMING OF YOU: *Selena tribute, Aug. 16.*

ABOUT PALA CASINO SPA & RESORT

Pala Casino Spa & Resort includes a Las Vegas-style casino with 2,000+ slot machines, 84 table games, eight poker tables and a 15,000-square-foot smoke-free casino area; a 507-room hotel; five swimming pools with two hot tubs and 14 luxury cabanas; a 10,000-square-foot, full-service spa and salon that features 17 treatment rooms, two cabanas and a state-of-the-art fitness center.

Pala also offers nine restaurants and 40,000 square feet of meeting and convention space. Pala Casino Spa & Resort is an AAA Four-Diamond Award winner for 15 consecutive years.

For more information, visit www.palacasino.com, www.facebook.com/palacasino, or www.twitter.com/palacasino. **IER**



YACHTLEY CREW: *Performing Aug. 21.*

Tickets are on sale now, with no service charge, at the Pala Box Office, www.palacasino.com and **1-877-WIN-PALA (1-877-946-7252)**. Tickets are also available at www.etix.com and **1-800-514-3849**.

All events and promotions are subject to cancellation without notice. Learn more about the upcoming events at Pala Casino Spa & Resort by visiting www.palacasino.com/entertainment



Find The
Inland Empire's Magazine for Things To Do
online at
InlandReview.com

FOLLOW US ON SOCIAL MEDIA
TO KEEP UP WITH THE
LATEST FUN EVENTS IN THE
INLAND EMPIRE



ESCAPE THE HEAT AT ALPINE SLIDE

Escape the sweltering heat in the cities this summer with a day of play in the cool spray on the double water slide at Alpine Slide in nearby Big Bear Lake.

Enjoy cooler temperatures in the mountains while splashing and splashing on Alpine Slide's two flumes of cascading water, which take riders down long straightaways and through numerous turns before depositing them in the solar-heated pool at the bottom.

WATER SLIDES

Water slide rides are inexpensive – just \$20 for an all day pass, 10 rides for \$15, or two bucks each. Season passes are \$69 for an anytime pass, and \$49 for a Sunday-Friday pass. This is a great way to beat summer heat, and parents who don't want to play don't get soaked either since they don't have to pay to get in, unlike at many other water parks. Spread a blanket out on the grass or take a seat on one of two outdoor sun decks and soak up the rays while the kids play.

BOBSLEDS

Alpine Slide is famous for its Olympic-style bobsleds which are in season all year long. Snow is never needed since the sleds have Teflon runners and ballbearing wheels, and the two quarter-mile long tracks with banked turns are cement.

Riders control their own speed with the brake, and unlike any amusement park ride, each trip down is a completely unique and interactive experience.

SOARING EAGLE

The New Soaring Eagle ride, the first one in California, treats riders to spectacular views of the lake and a thrilling 500 ft. descent during a zipline-type experience with a couple notable differences. Riders sit instead of lie down and ride up to the top tower backwards! And what a ride it is, dropping almost two



football fields in distance during a 125 foot descent that reaches speeds up to 26 mph.

Double seat belts secure up to two riders and they shoot to the top in the opposite direction they come down, almost as exhilarating as the descent itself.

Soaring Eagle zips down above the tree tops and riders hit top speed as they approach the bottom before the attraction comes to a stop. Photos and video of the experience can also be purchased.

GO-KART & MINI GOLF

Feed the need for speed on the Putt'N Around go-kart track before taking a few swings on the reconfigured 18-hole miniature golf course.

SNACK BAR

When it's time for a break from the fun, head to the base lodge for the family-priced snack bar including ice cream counter, cotton candy machine, video games, and more.

New this summer, season pass holders get a free upgrade to a large soda with a medium soda purchase!

SCHEDULE & MORE

Alpine Slide is now open daily for the summer. Alpine Slide is located at 800 Wildrose Lane in Big Bear Lake, ¼ mile west of the village shopping area, home to 60 specialty stores.

For more information, call (909) 866-4626 or go online to www.alpineslidebigbear.com. **IER**



Real Racing

Get On The Speedway

Feed your need for speed at Big Bear Speedway, where racers negotiate high-tech Sodi Karts around a one-fifth mile Grand Prix-style track filled with hairpin turns and S-curves during an authentic racing experience.

Tires squeal in the turns, engines roar, and drivers push race car-like karts to the limit in a true GoPro-worthy ride as they hit speeds up to 30 mph. Tecpro barriers used in Formula 1 and circuits around the world line the track to make the experience even more realistic.

Sodi's RT8 Kart is really a mini-race car with features straight from the automotive

industry, like self-adjusting hydraulic brakes and vacuum fuel pumps. The leader in the kart racing craze sweeping the country, Sodi Karts offer speed and safety with Four Point seat belts. It's a realistic experience that allows everyone to get a taste of Formula 1 racing!

The karts handle like race cars with pinpoint steering and the Honda Whisper Motors generate amazing power, enough for cars to lay rubber on the paved track through the many turns. Sodi RT8 Karts sport design elegance and fully adjustable patented pedals. Up to 11 karts are allowed on the track at one time as racers compete against the clock with the first lap not timed so guests can get a feel of their kart and the track.

Drivers get two to two-and-a-half miles of racing per heat depending on how fast they go. After their heat driv-

ers can get a printout of their time and the six fastest times in the heat.

Big Bear Speedway has 17 single karts and six doubles that have two steering wheels and two brake pedals for training or parents riding with a child. Safety is always the primary focus with racers required to wear professional grade helmets that are disinfected after each use.

Active law enforcement, fire and military personnel get 2-for-1 racing during Badge Days each Monday through Thursday (nonholiday). Just show proper ID and get two Speedway passes for the price of one, a \$15 value. **VERI**

RATES

Single Kart Race - \$15

Double Kart Race - \$20

SUMMER SEASON

Big Bear Speedway is now open daily for the summer.

MORE INFORMATION

Big Bear Speedway is at Big Bear Snow Play (42825 Big Bear Blvd., Big Bear Lake).

Call (909) 585-0075 or go online to www.bigbearspeedway.com.

Big Bear Speedway has implemented new cleaning and disinfecting procedures along with social distancing practices, and looks forward to welcoming back guests this summer.



Graphic Design & Publishing Services

29 years of professional design,
for print and electronic media

Word Mill Graphic Design specializes in print and electronic media, including print publication design and publishing, advertising design for both print and digital media, website construction and maintenance, logo design, postcards, brochures, and flyers.

We work with all sizes of companies, from individuals with projects to large companies and organizations looking for a consistent brand identity, to those in need of someone with the know-how to produce a full size, regularly published publication.

PRINT SERVICES

Typesetting & Layout
Magazine Production
Special Event Programs
Desktop Publishing
Print Advertising
Catalogs
Flyers
Conference Materials
Business Cards
Letterhead
Books & Covers

DIGITAL SERVICES

Graphic Design
Logo Design
Social Media Materials
Digital Advertising
Photo Manipulation
E-Books

MARKETING & SUPPORT SERVICES

Writing & Editing
E-Mail Marketing
Advertising Sales

(951) 686-7575
WWW.WORDPR.COM



Temecula Rod Run Cruise Night Only

AUGUST 28




The City of Temecula will host a modified Temecula Rod Run Cruise Night only for preregistered participants on Friday, August 28, beginning at 6pm. In accordance with the guidelines issued by the Riverside University Health Systems – Public Health and the State of California, the City of Temecula's Community Services Department has canceled the traditional Saturday Show and Shine Car Show,

but will continue with the Friday Night Cruise.

A new Cruise route has been relocated within Temecula's city limits and expanded beyond Old Town for proper physical distancing and safe public health protocols for all participants and spectators. All participants must follow normal traffic laws, as there will be no formal road closures.

At the conclusion of the event, participants and spectators are encouraged to cruise on over to the wide-variety of local restaurants for an enjoyable dining experience outdoors.

Join us the #ShopYourBlock efforts which ultimately support Temecula's merchants.

For more information, follow @TemeculaParksAndRec on social media, or visit [TemeculaCA.gov](https://temeculaca.gov) regularly for new updates and to experience the Rod Run Online Gallery. 

TEMECULA ROD RUN CRUISE NIGHT

FOR MORE INFORMATION, VISIT
[TEMECULACA.GOV/RODRUN](https://temeculaca.gov/rodrun).

What To Do

EVENT GUIDE

Send your events to ier@inlandreview.com or go online to www.inlandreview.com.

Get your event listed in the



"What To Do" Section

If you have an upcoming event that you would like to see listed in these pages, please send the following information:

- Name of the event
- Date and time
- City, location and address
- A contact phone number
- Name of the person submitting the event

Send it by:

EMAIL: IER@InlandReview.com

MAIL: Inland Entertainment Review
c/o Word Mill Publishing
5055 Canyon Crest Dr.
Riverside, CA 92507

WEB: Online at InlandReview.com and send us an email from the "Contact Us" form.

Inland Entertainment Review reserves the right to publish or withhold any material sent. Materials mailed will not be returned.

CASINOS

AGUA CALIENTE CASINO, PALM SPRINGS

(760) 323-5865.
www.sparesortcasino.com.
401 E. Amado Rd.,
Palm Springs.

AGUA CALIENTE CASINO, RANCHO MIRAGE

(866) 858-3600.
www.hotwatercasino.com.
32-250 Bob Hope Drive,
Rancho Mirage.

AUGUSTINE CASINO

760-391-9500.
www.augustinecasino.com.
84-001 Avenue 54, Coachella.

CAHUILLA CASINO

52702 Highway 371, Anza.
(951) 763-1200.
www.cahuillacasino.com.



FANTASY SPRINGS RESORT CASINO

For tickets and information, call
(760) 342-5000,
(800) 827-2946 or visit
fantasyspringsresort.com.
ROCK YARD: Live music, free and outdoors.

LAKE ELSINORE CASINO

20930 Malaga Rd., Lake Elsinore.
(951) 674-3101.
lercasino.com.

MORONGO CASINO

(800) 252-4499.
morongocasinosort.com.
49750 Seminole Dr., Cabazon.



PALA CASINO RESORT SPA

Box Office (877) 946-7252
Palacasino.com
11154 Hwy 76, Pala, CA 92059
(760) 510-5100
STARLIGHT OUTDOOR CONCERT SERIES: See article on page 13.
CORAZÓN DE MANÁ (MANA TRIBUTE): Aug. 2.
DSB (TRIBUTE TO JOURNEY): Aug. 7.
ONE DROP REDEMPTION (BOB MARLEY TRIBUTE): Aug. 14.
THE FAMILY STONE: Aug. 15.
DREAMING OF YOU (SELENA TRIBUTE): Aug. 16.
YACHTLEY CREW (TITANS OF SOFT ROCK): Aug. 21.
VIVA SANTANA (SPECIAL GUEST RAINBISOU): Aug. 23.
WAYWARD SONS (TRIBUTE TO 80'S ROCK): Aug. 28.
ROSE ROYCE: Sept. 5.
MARIACHI DIVAS: Sept. 6.
WAR: Sept. 9.

PECHANGA RESORT & CASINO

(951) 693-1819.
www.pechanga.com.
45000 Pala Road, Temecula.
Box Office (951) 303-2507.

SAN MANUEL INDIAN BINGO AND CASINO

(909) 864-5050.
www.sanmanuel.com
5797 North Victoria Avenue,
Highland.

SOBOBA CASINO

(951) 665-1000 or (866) 4-SOBOBA.
www.soboba.com.
23333 Soboba Road, San Jacinto.

SPOTLIGHT 29 CASINO

46-200 Harrison Place, Coachella.
www.spotlight29.com.
(800) 585-3737 or (760) 775-5566.

DESTINATIONS & EVENTS



CANYON CREST TOWNE CENTRE

Shop, dine, relax and enjoy at the Towne Centre, located at 5225 Canyon Crest Dr. in Riverside. (951) 686-1222. www.cctownecentre.com. Outdoor events are weather permitting. See article on page 11.



RIVERSIDE FARMERS' MARKETS

A wide variety of novelty and fresh food. www.riversideca.gov.

DOWNTOWN RIVERSIDE: Main Street between 5th and 6th Streets, every Saturday in downtown Riverside, 8am to 1pm.

GALLERIA AT TYLER: Every Sunday, 8:30am to 12:30pm, at the Galleria at Tyler parking lot in front of Barnes & Noble, 1299 Galleria at Tyler, Riverside.

KAISER PERMANENTE: Every Friday, 10am to 2pm, at the Riverside Medical Center, 10800 Magnolia Ave., in Riverside.

COUNTY OF RIVERSIDE: Every Wednesday, 8:30am to 1:30pm, at the County Administration Center, 4080 Lemon St., in Riverside.



DOWNTOWN RIVERSIDE

Outdoor dining, shopping, museums, and more in Downtown Riverside. www.riversidedowntown.org. See article on page 7.

EVENT GUIDE

Send your events to ier@inlandreview.com or go online to www.inlandreview.com.



TEMECULA ROD RUN CRUISE NIGHT

Aug. 28. This year's modified Rod Run will only feature the Cruise Night. See article on page 18.



TEMECULA VIRTUAL COMMUNITY SERVICES

The city of Temecula has compiled community resources on the web and is taking their June events online this year. temeculaca.gov/VirtualCS

MOUNTAIN ACTIVITIES



ALPINE SLIDE AT MAGIC MOUNTAIN & BIG BEAR SNOWPLAY

Enjoy fun in Big Bear. Bobsled-like ride, go-karts, miniature golf, Soaring Eagle ride, the new Mine Shaft Coaster, water slides, and more. Alpine Slide at Magic Mountain is located in Big Bear Lake, 800 Wild Rose Lane. Call (909) 866-4626. Also nearby is Big Bear Snow Play, on Big Bear Blvd., (909) 585-0075. www.alpineslidebigbear.com. See article on page 15.



BIG BEAR ALPINE ZOO

A wildlife alpine collection of more than 190 animals. Open Mon.-Fri., 10am to 4pm, and Sat. & Sun. 10am to 5pm, weather permitting. (909) 584-1299. www.bigbearalpinezoo.org. See article on page 9.



BIG BEAR ROPES COURSE

High octane obstacle course towering 35 feet off the ground. 42825 Big Bear Blvd. in Big Bear. (909) 585-0075. www.bigbearropescourse.com. See article on page 5.



BIG BEAR SPEEDWAY

Go Karting in Big Bear Lake. 42825 Big Bear Blvd. www.bigbearspeedway.com. See article on page 16.



LAKE ARROWHEAD VILLAGE

Shopping, dining, and plenty of year-round entertainment and activities for all ages. For more information, go online to www.thelakearrowheadvillage.com.

MUSEUMS



PALM SPRINGS AIR MUSEUM

Over 28 flyable planes and interactive exhibits housed in 60,000 square feet of climate-controlled hangars. 745 N. Gene Autry Trail, Palm Springs, (760) 778-6262. www.PalmSpringsAirMuseum.org.



PLANES OF FAME AIR MUSEUM

www.planesoffame.org
14998 Cal Aero Drive, Chino
909-597-3722
Open Wednesdays - Sundays 10AM - 4PM. Closed Monday & Tuesday. Tickets - \$8 per Adult, \$4 per Child, 4 years & under free.



SOUTHERN CALIFORNIA RAILWAY MUSEUM

Explore the West's largest collection of railway locomotives, passenger and freight cars, streetcars, interurban electric cars, buildings and other artifacts dating from the 1870's. 2201 S. A St., Perris. (951) 943-3020. socalrailway.org.

THEATRE & ARTS

ART DEPOT GALLERY

In the Helen Putnam Historical Plaza, in downtown Fontana. Visual arts programs, gallery exhibits and events. 16822 Spring St., (909) 349-6900. arts.fontana.org.

COACHELLA VALLEY REPERTORY THEATRE

The CVRep Theatre is located in the Atrium 69-930 Highway 111 in Rancho Mirage. To order tickets or for more information, call (760) 296-2966 or visit cvrep.org. **THEATRE THURSDAYS:** Thursdays at 6pm, online.

FALLBROOK ART CENTER

Sculpture, painting, printmaking, wildlife, glass, ceramic, and photography fine art shows. 103 S. Main St., Fallbrook. fallbrookartcenter.org. (760) 728-1414. **IER**

Inland ENTERTAINMENT

The Inland Empire's Guide to Fun

REVIEW



The Inland Empire's Magazine for Things To Do

Available free online

www.InlandReview.com • (951) 686-7575