

THEATER • ARTS • EVENTS • FAMILY FUN • CASINOS **FREE**

Inland

ENTERTAINMENT

The Inland Empire's Guide to Fun

REVIEW

April, 2020

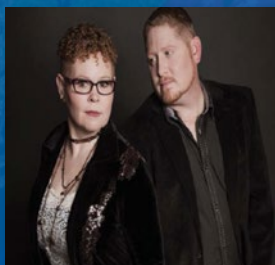


THE 97TH ANNUAL

RAMONA

TRADITION INTERRUPTED

**ALL EVENTS LISTED ARE SUBJECT TO CHANGE IN RESPONSE TO COVID-19 PUBLIC HEALTH CONCERNS
CHECK WWW.INLANDREVIEW.COM FOR UPDATES**



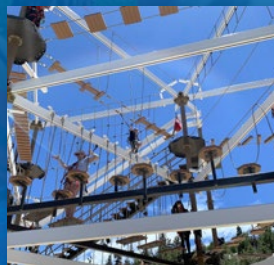
**Bluegrass In
The Spring At
Calico**



**Easter
Celebration &
Egg Hunt**



**Get Away To
Big Bear At
Alpine Zoo**



**Aim High At
The Big Bear
Ropes Course**



**Inland Empire
COVID-19
Notices**

Tradition Interrupted - Ramona Cancelled



CALIFORNIA'S OFFICIAL OUTDOOR PLAY
Ramona

*With a Very Heavy Heart
We Announce the
Cancellation
of This Time Honored
Tradition*

We Have a Donor Willing to Match All Donations We Receive



The Ramona Bowl is a non-profit organization that survives only on our ticket sales, sponsorships and donations. We cannot do our signature event *Ramona* that sustains us all year long nor can we do other events anytime soon. **WE HAVE A DONOR WILLING TO MATCH DOLLAR FOR NET DOLLAR ANY DONATIONS THAT WE RECEIVE.**

We are a Non-Profit 501(c)3 Donations of any size are very much appreciated!

You can double your donation with our donor's matching funds

To Donate go to RamonaBowl.com or Call 951-658-3111

Or mail your donation to: Ramona Bowl Amphitheatre, 27400 Ramona Bowl Road, Hemet, CA 92543

INDEX OF SPECIAL SECTIONS

SECTION	PAGE
<p>Theater and the Arts Stage events around the Inland Empire</p> 	18
<p>What To Do A wide range of events and activities across the IE</p> 	22



ABOUT THE COVER: A TRADITION IS INTERRUPTED as the coronavirus pandemic causes the cancellation of the 97th Annual Ramona Festival. Read about it on page 18.

April, 2020

Editor In Chief **Tana Pigeon**
Publisher **Word Mill Publishing**

WWW.INLANDREVIEW.COM

Inland Entertainment Review is published monthly and can be found at more than 400 locations throughout the Inland Empire (Riverside and San Bernardino Counties), including select Albertsons, restaurants, convenience stores, and other locations (the print edition is suspended for the April, 2020 issue). Inland Entertainment Review brings you the best in Inland Empire Entertainment.

Inland Entertainment Review is not responsible for incorrect pricing or information listed or for loss or damage of unsolicited materials. Opinions expressed by writers and advertisers are their own and do not necessarily represent those of the publisher. Redistribution in whole or in part is prohibited.

Copyright 2020 by Word Mill. All rights reserved.

CONTACT US

For mail correspondence,
or to send advertising materials:
Inland Entertainment Review
5055 Canyon Crest Dr., Riverside, CA 92507
Advertising or Editorial inquiries
(951) 686-7575
IER@InlandReview.com
www.InlandReview.com



Word Mill Publishing, creating quality publications since 1992

Alpine Slide at Magic Mountain and Big Bear SnowPlay will be closed until further notice.
Please check Facebook or Website, AlpineSlideBigBear.com and BigBearRopesCourse.com, for updates on reopening.

Alpine Slide at Magic Mountain

New Soaring Eagle Ride



YEAR ROUND FAMILY FUN



ALPINE SLIDE
1/4 Mile Track

SNOW MAKING



Covered Magic Carpet
NO MORE WALKING!

At Alpine Slide
You only pay if you play!

Video Games
Snack Bar &
Old Fashioned
Ice Cream
Counter

909-866-4626

WINTER: Monday-Friday 10am-4pm
Saturday & Sunday 10am-Dusk

EVENINGS:
Friday, Saturday & Holidays 5-9pm

www.AlpineSlideBigBear.com

Winter Fun & Snow Play

Hop aboard our Magic Carpet for an easy ride to the top and a fun packed day of tubing!



TUBING November 'till Easter

Reach New Heights At The Exciting Big Bear Ropes Coarse

A state-of-the-art aerial adventure in the mountains

Big Bear Lake introduced a new recreation feature that reaches new heights with a high-octane obstacle course that towers 35 feet off the ground! Big Bear Ropes Course is a state-of-the-art aerial adventure designed to give families an exhilarating yet challenging experience all bundled into one.

Big Bear Ropes Course is far from an ordinary family day at the park. Instead, this two-story obstacle course that spires high above Big Bear allows participants of varying ages, from young children to adult, to face an array of challenges and features.

There are a variety of suspension bridges, some with wide-open gaps, some with nothing but two-inch round cables to scramble across, yet another that overhangs on a curving structure with dangling ropes to grasp onto.

All in all there are 37 different obstacles on this towering two-level ropes course. There is even an airborne element added to the equation for those who wish to experience the joy of flying. The Sky Rail Zipline stretches 80 feet and bananas out onto a ledge, enhancing the overall excitement.


“Nothing but thrills! We’re bringing a whole new excitement to Big Bear. Think American Ninja Warrior or The Titan Games, but on a family-friendly level that is especially designed for kids,” said Big Bear Ropes Course Manager Shannon Wilson. “Best of all, our ropes course is engineered to ensure the highest standards of safety.”

While some features teeter and other features wobble, participants need not fret about falling, because they’re at the

utmost level of protection. Each participant is fully secured on Big Bear Ropes Course’s advanced safety system, which includes a five-point, full-body harness connected to a safety line, with a slider puck that is inserted into a continuous belay track system. Each participant is fully secured at all times from start to finish. The slider puck can only be inserted or taken out of the track by a certified operator at the entrance and exit of the ropes course.

There are certified operators on the ropes course at all times in case any participant requires assistance.

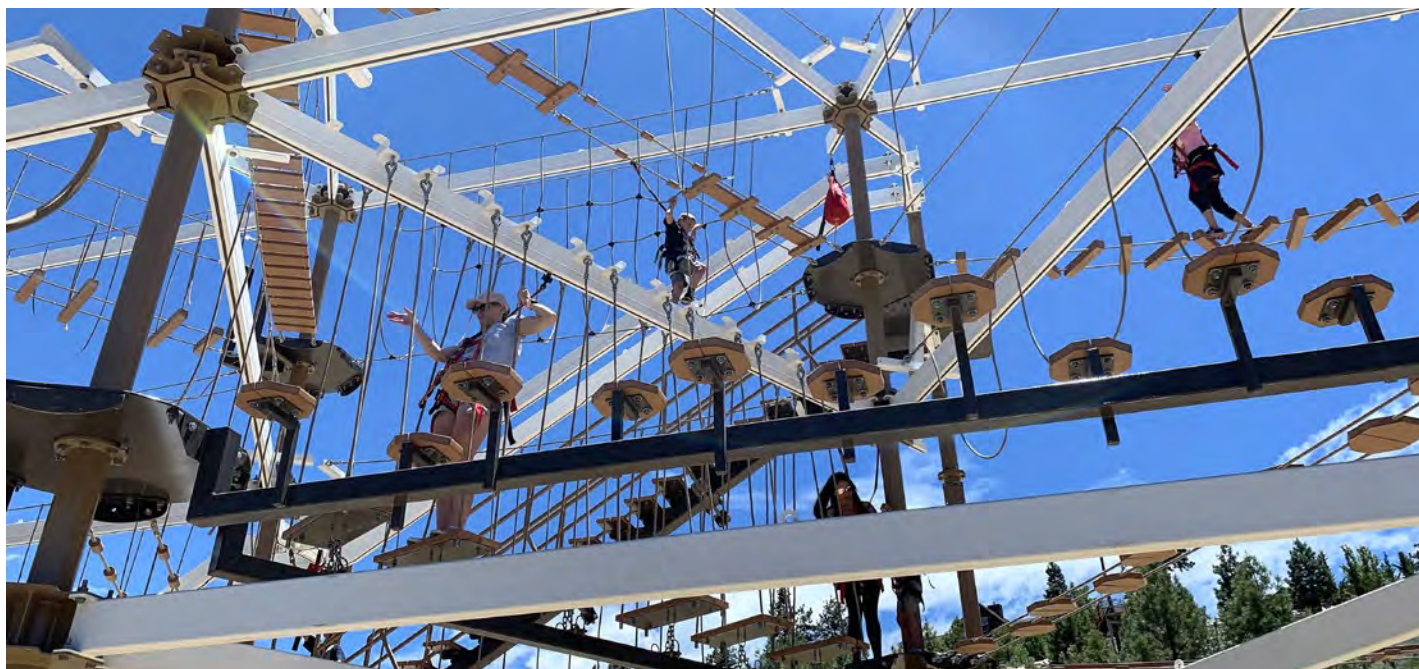
Big Bear Ropes Course remains open all-year round (weather-dependent). Participants must be at least 42” tall. Participants 42” to 48” must be accompanied by an adult 18 years or older. Maximum weight for an individual cannot exceed 300 lbs.

For more information call (909) 585-0075 or visit BigBearRopesCourse.com. 

Big Bear Ropes Coarse

The cost is \$12 per person, per 20 minute session. Guests are encouraged to call ahead for operating hours, as operating hours change throughout the year.

Big Bear Ropes Course is located at 42825 Big Bear Blvd. (the same location as Big Bear Speedway / Big Bear Snow Play).



BLUEGRASS IN THE SPRING

May 9 & 10, 2020

MUSIC PERFORMANCES BY:

THE CALICO STRINGS

THE BILLHILLYS

GRASSLANDS

LILIES OF THE WEST

VIRTUAL STRANGERS

HOT OCTOBER

ROSE'S PAWN SHOP

NU-BLU

LOCATION:

GHOST *Calico* TOWN

36600 Ghost Town Road, Yermo, CA 92398

**FRIDAY NIGHT
CAMPERS' JAM**

OTHER ENTERTAINMENT:

BON FAMILY CLOGGERS

COOK'S RACING HOGS & DOGS

CALICO GUNFIGHTERS

BLACKSMITH DEMOS

FAMILY CONTESTS & GAMES

SHOPS & ATTRACTIONS

FREE KIDS CRAFT ROOM



CAMPING STILL AVAILABLE!

Regional Parks

760-254-1123 calicotown.com

\$10 Adult

\$5 Youth (4-11)

Minutes north of Barstow, I-15 exit Ghost Town Road

FREE 3 & under



SAN BERNARDINO
COUNTY

BIG BEAR ALPINE ZOO:

SAVING WILDLIFE AND CONNECTING A MOUNTAIN COMMUNITY TO WILDERNESS SINCE 1959



“OUR PRIMARY GOAL IS TO HELP THESE ANIMALS ACHIEVE A STATE OF INDEPENDENCE SO THAT THEY CAN SURVIVE INDEPENDENTLY IN THE WILD.”

The bush fires in Australia may have spelled doom for the Kangaroo Island dunnart, a small nocturnal pocket-sized carnivorous marsupial found on Kangaroo Island. With their population size less than 500, the fate of this small mammal may be dismal. Sadly, no one will probably notice its demise except for naturalists and researchers. After all, this little marsupial is not as well known as the kangaroo, platypus, koala, or even kookaburra, but they still play a role in maintaining the balance of a delicate ecosystem.



As nocturnal carnivores, they actively hunt during the night, catching and eating beetles, crickets, spiders, small reptiles, amphibians, and even small mammals. During a period of sustained drought, natural disasters can have catastrophic results on both wildlife and wild places.

Although nowhere near the catastrophic proportions as Australia, The Big Bear Alpine Zoo got its start as the result of a local fire. Back in 1959, a black bear and two bobcats were rescued, treated and given a permanent home after it was deemed they were too injured to be returned to the wild. Since then, Big Bear Alpine Zoo has made it part of their mission to be a mountain facility with a multifaceted purpose.

Zoo Curator Bob Cisneros summed it up, “We rescue animals who could not survive on their own in the wild. We rehabilitate injured, orphaned, or sick animals and release them back into the wild as healthy animals. More importantly, we educate the public about the positive and negative roles that humans play in our interaction with nature.”

Throughout the year, the Big Bear Alpine Zoo receives orphaned, sick, or injured wildlife. Often, these animals are too compromised to survive in the wild on their own; the direct result of negative human impact.

“Our primary goal is to help these animals achieve a state of independence so that they can survive independently in the wild,” Cisneros added.

Unreleasable animals take on a new role becoming ambassadors and helping to connect the public to wildlife. “Our ambassadors help us to educate the public about the uniqueness of their species and habitat. This is where we emphasize that the good that we do as a rescue and rehab facility cannot be achieved alone. We rely on partnerships in mountain stewardship.”

The fires in Australia are a good reminder of how delicate the balance of life is in specialized habitats. As a sky island, Big Bear maintains several unique species not seen at sea level. Cisneros explained, “a natural disaster could have a catastrophic effect on the popula-

tion of Humboldt’s flying squirrels here in Big Bear. Our goal is to introduce our guests to this cute, adorable, flagship species so that our guests will join us in making a difference for wildlife and wild places.”

A trip to the zoo in Big Bear will expose you to many majestic animals native to our mountain, and a few others like snow leopards, snowy owl, and arctic fox that are native to other alpine climates.

If you plan on visiting the zoo during the summer months, you may be fortunate to visit the zoo’s brand new 5.5-acre facility. With an expected opening date by early summer, the zoo will boast a modern design with more space for the animals, emphasizing both maximum animal welfare and maximum guest experience.

If you want to know more about the facility and the animals in their care, check out the website at bigbearzoo.org or like them on their facebook page. [IER](#)

The Big Bear Alpine Zoo is operated and owned by the Big Bear Valley Recreation and Park District, a Special District of the County of San Bernardino. The zoo is open daily from 10am through 5pm during the summer and 10am through 4pm during fall, winter, and spring months.

Located at 43285 Goldmine Drive, Big Bear Lake, the zoo is right across the street from Bear Mountain Ski and Board Resort.

Each day at noon there is an animal presentation done by one of their keepers and three animal enrichment talks at 1pm, 2pm, and 3pm.

GENERAL ADMISSION

Adults 10-59 \$12

Children 3-9 \$9

Military active duty or retired with ID \$9

Seniors 60 and over \$9

Children 2 and under Free

EASTER

CELEBRATION & EGG HUNTS

Sunday, April 12th

9 am - 5 pm

\$8 per Adult

\$5 per youth 4-11

EGG HUNTS BY AGE

2 & UNDER

3-4 YEARS OLD

5-7 YEARS OLD

8-12 YEARS OLD

(WRISTBAND REQUIRED. SPACE LIMITED
DETAILS ON REVERSE)

Calico Ghost Town

36600 Ghost Town Rd.

Yermo, CA 92398

Bring
Your
Own
Basket

Crafts,
Music,
Games
& Fun!

Get Your Photo
Taken with the
Easter Bunny!



Regional Parks

For more information 760-254-1123 or events@parks.sbcounty.gov

Calico Ghost Town Easter Celebration

Sunday, April 12

Calico Ghost Town (36600 Ghost Town Rd., in Yermo) hosts an Easter Celebration & Egg Hunts on April 12, 9am to 5pm. Admission is \$8 per adult, \$5 per child ages 4-11. Enjoy crafts, music, games, and more, including getting your photo taken with the Easter Bunny. SEE THE EVENT SCHEDULE BELOW FOR DETAILS.



8:30 a.m. Wristband Station opens for morning hunts ONLY

9 a.m. Calico Ghost Town shops open.

10 a.m. & 2 p.m. EASTER EGG HUNTS* (No Pushing! No Running! No Adults!)

10:30 a.m., 12:30 p.m., & 3 p.m. Twinkle Time- Popstar for Kids on Main Street Stage

11 a.m. "Egg Toss" (all ages welcome) in front of Lane's General Store-SPACE LIMITED

11:30 a.m., 1 p.m., & 3:30 p.m. Calico Mountain Volunteer Gunfight in front of Lil's Saloon

12 p.m. "Egg on a Spoon" relay game (12 yrs. and younger welcome) in front of The Calico Craft Corner- SPACE LIMITED

12:30 p.m. Wristband Station opens for afternoon hunts ONLY

1:15 p.m. "Chubby Bunny" game (all ages welcome) in front of The Calico Craft Corner-first 40 participants only; 20 for kids contest 12 and younger; 20 for adults Contest 13 and older

4 p.m. "Carrot Toss" game (12 yrs. and under welcome) in front of The Calico Craft Corner

5 p.m. Calico Ghost Town closes!

(All activities subject to change without notice)

*All children participating in the egg hunts will need to obtain a wristband prior to start of hunt. Hunts will be divided based on age. Space is limited to 200 bands per hunt. No saving or selling bands. Child must be present at wristband station when requesting a wristband. All hunts will take place in open lot across from Calico House Restaurant, one following the next.

For more information, call (760) 254-1123 or email events@parks.sbcounty.gov. 

Alpine Slide at Magic Mountain and Big Bear SnowPlay will be closed until further notice.

Please check Facebook or Website, AlpineSlideBigBear.com and BigBearRopesCourse.com, for updates on reopening.



Open Daily
Nov. - April
10 a.m. - 4 p.m.

THE LARGEST TUBING HILL
IN SOUTHERN CALIFORNIA

- Snow Tubing on 8 Runs • Unlimited Rides
- 2 Magic Carpet Lifts (easy ride to the top!)
 - Snowmaking • Nightly Grooming
 - Heated Base Lodge • Free Parking

909-585-0075 • BigBearSnowPlay.com
42825 Big Bear Blvd. (next to Motel 6)



Plus...

Glow Tubing

Open Every

Friday, Saturday,

& Holiday Nights

5 p.m. - 9 p.m.



Big Bear Ropes Course
Open All Year 'Round!

Located at Big Bear SnowPlay

- 2 Stories Tall
- 6,400 sq. feet of Challenges
- Sky Rail Zipline
- Great Family Adventure!

BigBearRopesCourse.com

New Attraction Soars Like An Eagle

Big Bear's Soaring Eagle Offers Families A New Adventure This Winter

Alpine Slide at Magic Mountain's newest attraction is the Soaring Eagle. This one-of-a-kind ride is not seen anywhere else in California. The Soaring Eagle is a family-friendly, dual seated zipline ride that gives guests the sensation of flying high above Big Bear's snow-covered forest floor.

The Soaring Eagle is designed for all ages (must be at least 42 inches tall to ride). It can carry two riders at a time on comfortable side-by-side seats equipped with safety buckles. This exhilarating amusement style ride is 500-foot long with a 100-foot vertical drop.

The Soaring Eagle starts at the base of Alpine Slide at Magic Mountain, and lifts riders backwards on a zipline cable to a 70-foot tall launch tower that is situated on a hillside. The backwards ride to the towering peak is a delight in itself offering spectacular views of Big Bear Lake and surrounding mountain vistas.

Once the Soaring Eagle reaches the top, it pauses for a brief moment so riders can take in the unsurpassed beauty below. The most exciting part of the ride is when it catapults forward at speeds up to 26 mph, on a 100-foot long vertical drop, that travels 500 feet back to the base.

"The Soaring Eagle is on a zipline cable. However, it's different from traditional harness-style ziplines. It maintains the same excitement as traditional ziplines, but provides flying with the greatest of ease for two people at a time," said Alpine Slide at Magic Mountain Manager Julie Eubanks. "The main advantage of course is it gives guests outstanding views of Big Bear valley."

The Soaring Eagle is open all-year round (weather-dependent). Riders must be at least 42" tall to ride. Riders 42" to 48" must be accompanied by an adult 18 years or older. Maximum weight for an individual cannot exceed 300 lbs., and maximum combined weight of two riders cannot exceed 450 lbs. The cost is \$12 per person, per ride.

Alpine Slide at Magic Mountain is open daily from 10am to 4pm for the Soaring Eagle Zipline, as well as snow tubing, the Alpine Slide toboggan run, mini-golf and go-karts. **LER**



FOR MORE INFORMATION

800 Wildrose Lane (just off Big Bear Blvd.)

(909) 866-4626

Hours: Open Daily 10 AM – 4 PM

www.AlpineSlideBigBear.com

THEATER • ARTS • EVENTS • FAMILY FUN • CASINOS **FREE**

Inland ENTERTAINMENT

The Inland Empire's Guide to Fun **REVIEW**

March, 2020



Saving Wildlife At Big Bear's Alpine Zoo



Michael Carbonaro At Pala Casino



Ramona Returns To Hemet



High Flying Thrills In Big Bear



Sister Act At Lewis Family Playhouse

Inland ENTERTAINMENT

The Inland Empire's Guide to Fun **REVIEW**

is available for home delivery with an annual subscription

A full year for only \$12

Mail in this form or fill it out online at www.inlandreview.com

Name

Address

City

State

Zip

Email

You will be billed to the address above.

Fill out this form and mail to:
Word Mill Publishing: 5055 Canyon Crest Dr., Riverside, CA 92507
Or subscribe online at www.InlandReview.com

BLUEGRASS IN THE SPRING

May 9-10 at Calico Ghost Town

Bluegrass in the Spring, featuring bluegrass music, cloggers, old time games, gunfight shows, and more, is scheduled to be held Saturday, May 9, and Sunday, 10, at Calico Ghost Town.

All San Bernardino County Regional Parks are currently closed in response to the COVID-19 outbreak. As of this writing, they were rescheduled to open on April 3, but check the website at www.calicotown.com and www.inlandreview.com for updates on this evolving situation.

MUSIC INCLUDES

PERFORMANCES BY:

- The Calico Strings
- The Billhillys
- Grasslands
- Lilies of the West
- Virtual Strangers
- Hot October
- Rose's Pawn Shop
- Nu-Blu

PLUS OTHER

ENTERTAINMENT:

- Bon Family Cloggers
- Cook's Racing Hogs & Dogs
- Calico Gunfighters
- Blacksmith Demos
- Family Contests & Games
- Shops & Attractions
- Free Kids' Craft Room
- And, on Friday night there will also be a Campers' Jam! 



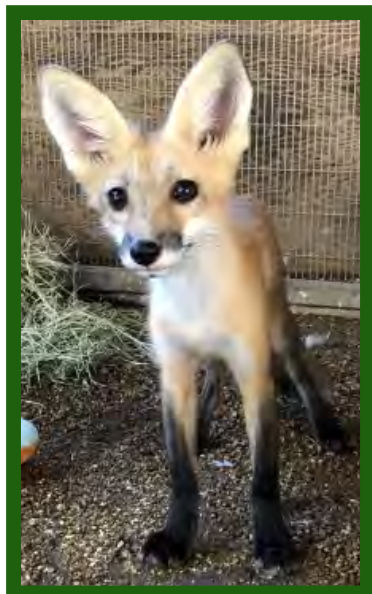
BLUEGRASS IN THE SPRING: *Conditions permitting, come enjoy bluegrass by such performers as Nu-Blu at Calico Ghost Town in Yermo.*

BLUEGRASS IN THE SPRING

This event is sponsored by San Bernardino County Regional Parks. For information contact 760-254-1123, or go online to www.calicotown.com.

Tickets: \$10 for adults; \$5 youth (4-11); Free, 3 and under.

Calico Ghost Town: 36600 Ghost Town Road (minutes north of Barstow, 1-15, excite Ghost Town Road), Yermo.



*Connecting people to wildlife through
rescue, rehabilitation, and education*

Open Daily (weather permitting)

43285 Goldmine Dr., Big Bear Lake, CA

909-584-1299 / www.BigBearAlpineZoo.org

Big Bear Alpine Zoo

Tentative 2020 Events Calendar

Earth Day
APRIL 18

Bear Awareness
MAY 23

**Bowling For
The Zoo**
JUNE 7

**National
Zookeepers Week**
JULY 19 TO JULY 25

Ice Cream Safari
AUGUST 15

**Village
Fundraising Walk**
SEPTEMBER 5

Flashlight Safari
ALL FRIDAYS &
SATURDAYS IN
OCTOBER

Wolf Awareness
OCTOBER 24

Boo In The Zoo
OCTOBER 31

Santa Claws
DECEMBER 12 AND 19

Visit Our Website at

www.BigBearAlpineZoo.org

for more information





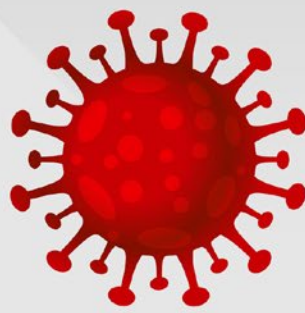
Find The
Inland Empire's Magazine for Things To Do
online at
InlandReview.com

FOLLOW US ON SOCIAL MEDIA
TO KEEP UP WITH THE
LATEST FUN EVENTS IN THE
INLAND EMPIRE



CORONAVIRUS COVID-19

Inland Empire Entertainment GUIDE



All of us at the Inland Entertainment Review wish you and your family well, and hope you are staying safe and healthy in this difficult time.

This Resource Guide contains news and information about canceled and postponed events, as well as important information related to the COVID-19 outbreak.

**Find The Latest
Riverside County
Updates
At
[RIVCOPH.ORG/
CORONAVIRUS](http://RIVCOPH.ORG/CORONAVIRUS)**

APRIL TROUT DERBIES AT SAN BERNARDINO COUNTY PARKS CANCELED

The California Department of Fish & Wildlife has issued a bulletin to cancel all derbies until April 30th, following the Governor's statewide order.

For more information and updates, visit www.sbcounty.gov/parks.



CITY OF RIVERSIDE OPEN FOR BUSINESS INTERACTIVE MAP



The City of Riverside has created a map that will allow residents to see the essential businesses that are open for business during the Governor's Stay at Home order.

These are difficult times for all of us and many local business owners and operators are our friends and neighbors. By rallying together to support our business community whenever possible, we can save local jobs, keep our tax dollars circulating locally, and help Riverside emerge from the COVID-19 crisis with the least negative impact possible.

TO VIEW THE MAP, CLICK HERE.

**Find The Latest
San Bernardino County
Updates At
[WP.SBCOUNTY.GOV/DPH/
CORONAVIRUS/](http://WP.SBCOUNTY.GOV/DPH/CORONAVIRUS/)**

TEMECULA VALLEY BALLOON & WINE FESTIVAL RESCHEDULED TO SEPT. 25-27

Due to the unprecedented outbreak of COVID-19 (the Coronavirus), the Temecula Valley Balloon & Wine Festival (TVBWF) has been rescheduled to September 25-27, 2020.

"While we remain hopeful that the drastic moves made by our state and local governments will curtail the outbreak, the health and safety of the community, Festival guests, participants, and partners is our number one priority," stated the Festival's executive director Stacey Ellison. "It is out of an abundance of caution that we are rescheduling the 2020 event to September. The Temecula Valley Balloon & Wine Festival will return to its traditional dates for 2021."

The event is held each year at Lake Skinner Recreation Area in the heart of Southern California Wine Country. The event includes sunrise hot air balloon launches, evening balloon glows, concerts on two stages, and tastings of wine, craft beers, mead and local distilled spirits.

For more information and updates regarding the rescheduling, visit www.tvbwf.com or the Festival's Facebook Page at www.facebook.com/TVBWF/



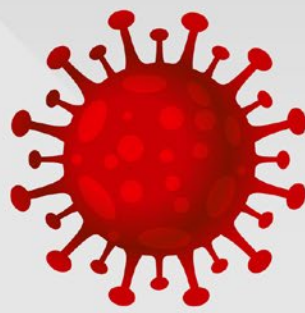
TEMECULA LAUNCHES VIRTUAL COMMUNITY SERVICES WEBPAGE

The City of Temecula has compiled a number of valuable and timely resources on a new TEMECULA VIRTUAL COMMUNITY SERVICES webpage (TemeculaCA.gov/VirtualCS) to keep our community healthy and safe by remaining active, engaged, and connected.

Please note that any information is subject to change. For the latest, see our website at www.inlandreview.com.

CORONAVIRUS COVID-19

Inland Empire Entertainment GUIDE



2020 Garden Grove Strawberry Festival Canceled Due To Coronavirus Covid-19

Christine Ball, President of the Garden Grove Strawberry Festival Association, announced that the 2020 Garden Grove Strawberry Festival will be canceled for this year, saying: "Due to the current worldwide outbreak of the Coronavirus COVID-19 pandemic, it is with great

regret the board of the Garden Grove Strawberry Festival Association has made a unprecedented decision to cancel this year's 2020 Garden Grove Strawberry Festival, which was slated to happen in Garden Grove, CA on Memorial Day Weekend, May 22 – 25, 2020."

Ball continued, "It is our social responsibility and duty to comply with the recommendations of the US Centers for Disease Control and Prevention and our elected political officials to prevent the spread of the Coronavirus. Our highest priority now is to protect the lives and health of all our Festival vendors, staff, volunteers, and the hundreds of thousands of dedicated Festivalgoers who turn out annually to support our free Festival."

Ball added, "Our Festival's mission will always be to support our community of Garden Grove. This year the Festival awarded \$100,000 to non-profit organizations, which serve the citizens of Garden Grove, CA, and we will continue to serve our community moving forward. We apologize for this little unexpected bump in the road which none of us were anticipating. But rest assured, we will be back next year in full force to present our rescheduled 62nd Annual Garden Grove Strawberry Festival on Memorial Day Weekend, May 28 – 31, 2021, so please Save The Dates!"

Additional information about next year's Garden Grove Strawberry Festival will be announced soon. For updates, visit the website, www.strawberryfestival.org.



THEATER EVENT GUIDES

For information about venues across the Inland Empire, don't forget to also check out Theater and Arts Guide and What To Do Guide, in this issue. You can find them on pages 18 and 22.

PALA CASINO

PALA BAND OF MISSION INDIANS ANNOUNCES TEMPORARY CLOSURE OF PALA CASINO TO PREVENT THE SPREAD OF COVID-19

In an effort to protect the health and safety of guests and team members and to further prevent the spread of novel coronavirus (COVID-19), the Pala Band of Mission Indians announced the temporary closure of Pala Casino Spa & Resort on Friday, March 20.

"After careful consideration, the Pala Band of Mission Indians felt that the decision to temporarily close Pala Casino is absolutely necessary as we work to protect our guests and team members and further prevent the spread of the coronavirus," said Pala Band of Mission Indians Chairman Robert Smith. "We are thankful for the dedicated medical professionals who are working tirelessly to contain this pandemic and send our sympathies to all that are directly affected by this tragedy."

For up-to-date information on the latest property and entertainment updates, visit their website at www.palacasino.com.

LEWIS FAMILY PLAYHOUSE CANCELS PRODUCTIONS THROUGH APRIL AND EARLY MAY

Following orders of San Bernardino County officials, in an effort to protect the public from any possible spread of the virus that

causes COVID-19, the Lewis Family Playhouse at Victoria Gardens Cultural Center canceled all programming until the end of April 2020. This includes the following programming:

- Sister Act
- Mummenschanz "you & me"
- Inland Pacific Ballet's The Little Mermaid
- The Miraculous Journey of Edward Tulane

Also canceled: VSPI's Roald Dahl's Matilda (May 8 – May 10)

A statement from the theater states, "The safety of our patrons, volunteers and staff has always been and will continue to be our number one priority. We will continue to keep in touch with updates regarding our operations and future plans."

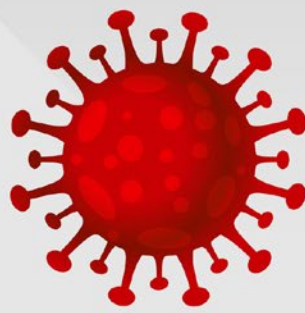
For the most current information, please visit their website, www.VGCulturalCenter.com.



Please note that any information is subject to change. For the latest, see our website at www.inlandreview.com.

CORONAVIRUS COVID-19

Inland Empire Entertainment GUIDE



PLANES OF FAME AIRSHOW CANCELED

Due to the Covid-19 Pandemic the 2020 Planes of Fame Airshow has been canceled. All Airshow tickets can be transferred to their VintageFest Celebration in September 2020, donated to the Museum, or refunded back to you. VintageFest will include aircraft fly-bys, many of which were scheduled for the 2020 Airshow.

For more information, go online to their website at www.planesoffame.org.

Although the Planes of Fame Airshow has been canceled this year, and the Museum remains temporarily closed, you can make a difference and help them “Keep ‘em Flying” by purchasing your very own Limited-edition 2020 Airshow T-shirt.

The museum has custom-designed 2020 Airshow T-shirts in stock. These shirts have become instant collector’s items and are going fast (short-sleeve \$10, long-sleeve \$14).

Planes of Fame Air Museum is a 501.c.3 nonprofit and canceling their biggest program of the year will have a huge financial impact to their operations and mission to preserve aviation history for future generations. Every little bit helps! (These awesome T-shirts make great gifts too.)



RIVERSIDE COMMUNITY PLAYERS RESCHEDULES PLAYS

Riverside Community Players has rescheduled performances of “The Mousetrap” for July 10-July 26 in response to the COVID-19 outbreak. To accommodate this change they are also rescheduling “Laughter on the 23rd Floor” with the goal of it being included as part of their 2020-21 season - full details for next season to be announced soon.

There are no changes to “The Curious Incident of the Dog in the Night-Time” currently planned.

Their 3rd Spotlight Series production of “Oleanna” will be moved to June 20th and 21st.

All of these new dates are pending the approval of licensing houses.

Please contact the box office to discuss options for refunding or replacing tickets affected by these changes. Please contact the theater at rcporg@earthlink.net with any questions.

Riverside Community Players can be found online at www.riversidecommunityplayers.com. For more information, call (951) 686-4030.

CANYON CREST TOWNE CENTRE EATERIES OFFERING TAKE-OUT AND DELIVERY SERVICES

Canyon Crest Towne Centre remains open for essential needs and services during the COVID-19 outbreak. Grocery stores, pharmacies, healthcare providers, gas stations, banks, and restaurants offering drive-thru and pick-up service are working hard to serve our community. Several stores have adjusted their regular business hours to allow time for additional cleaning, disinfecting, and restocking items. Additionally, some stores are offering special shopping times for seniors 65+ and those with special medical conditions.

Eateries offering take-out and delivery options:

& BURGERS: Phone orders, Pick-up and delivery, 11:30-6:00pm (951) 344-4599

CC ICE CREAM & WATER: Open, Call for current hours (951) 675-7385

CARLS JR./GREEN BURRITO: Drive-Thru and Take-out, Dining Room closed

CREST CAFÉ: Inside Dining, adhering to guidelines. Take-out & Delivery. Open 7:00AM-8:00PM (951) 784-2233

DONUT TYME: Take out, Open 4:30AM-8:00PM (951) 788-5043

EAST COAST BAGEL: Take-out (951) 781-0310

ESPETTOS BRAZILIAN GRILL: Take-out & Delivery (951) 534-0250

ISABELLA'S CUPCAKES: Walk-in, take-out, phone orders & deliveries (951) 782-9200

JAMMIN' BREAD: Take-out and delivery (951) 369-1869

MARISA'S ITALIAN DELI: Take-out and delivery, closes at 7:00pm (951) 788-3899

MONARK ASIAN BISTRO: Take-out and Delivery with Postmates. Hours - 11:30AM—8:00PM (951) 683-1073

NEKTER JUICE BAR: Take-out and delivery. Hours 8:00AM-8:00PM (951) 224-9842

PEPITO'S MEXICAN RESTAURANT: Take-out, Limited Dining, Call for hours (951) 783-9444

ROMANO'S RESTAURANT: Take-out, Curbside Pick-up, and Delivery. Hours - Monday 4:00PM-9:00PM Tuesday-Sunday 11:30AM-9:00PM. Ask about cocktail delivery. (951) 781-7662

SMOKEY CANYON BBQ: Take-out, Walk-ins, Phone orders and Grub Hub Deliveries. Hours - Tuesday-Friday 11:00AM-8:00PM, Saturday 9:00AM-8:00PM, Sunday 9:00AM-7:00PM. (951) 782-8808

STARBUCKS: Call for current hours (951) 683-4981

SUBWAY: Take-out and Delivery. (951) 686-3785

TOP GRILL: Take-out and Delivery (951) 530-8668

For more information, visit shopcanyoncrest.com or call (951) 686-1222.



Word Mill

graphic design

Graphic Design & Publishing Services

29 years of professional design,
for print and electronic media

Word Mill Graphic Design specializes in print and electronic media, including print publication design and publishing, advertising design for both print and digital media, website construction and maintenance, logo design, postcards, brochures, and flyers.

We work with all sizes of companies, from individuals with projects to large companies and organizations looking for a consistent brand identity, to those in need of someone with the know-how to produce a full size, regularly published publication.

PRINT SERVICES

Typesetting & Layout
Magazine Production
Special Event Programs
Desktop Publishing
Print Advertising
Catalogs
Flyers
Conference Materials
Business Cards
Letterhead
Books & Covers

DIGITAL SERVICES

Graphic Design
Logo Design
Social Media Materials
Digital Advertising
Photo Manipulation
E-Books

MARKETING & SUPPORT SERVICES

Writing & Editing
E-Mail Marketing
Advertising Sales

(951) 686-7575
WWW.WORDPR.COM

Word Mill
graphic design

Theater & The Arts

Traditions

RAMONA A Tradition Interrupted

Stacey Bailey, Ramona Bowl Amphitheatre President, and
Lori VanArsdale, Ramona Bowl Amphitheatre Past President

Not since World War II has the production of Ramona, California's Official Outdoor Play and our Nation's longest running outdoor drama, been interrupted. With mandates from our local and state governments over the Coronavirus outbreak and our concern for the health of our play attendees as well as the almost 500 members of our cast and volunteers, the Ramona Bowl Board of Directors had to make the heartbreaking decision to cancel our Ramona Season this year.

Presented annually for decades in the beautiful Ramona Bowl Amphitheatre, Ramona is a long lived tradition where hundreds of volunteers from the surrounding community come together to tell the tale of injustices to Native Americans that are as meaningful today as they were when the book was first written by Helen Hunt Jackson in 1884.

STORIED HISTORY

Through the years Ramona has featured actors and actresses who went on to grace the silver screen including Victor Jory, Raquel Welch, and Anne Archer. Victor Jory starred in hundreds of movies, TV shows, and play productions through the decades. He starred as Alessandro in 10 seasons of Ramona and also directed the play along with his wife Jean Innes.

Raquel Welch and Anne Archer both began their careers starring as Ramona and went on to become quite famous.



A FAMILY THING: Three generations of Red Tail Spirit Dancers, Steve, Alexis, and Anthony Alvarez.



RAMONA: Author Helen Hunt's 1884 Ramona is timeless, with the play presented annually in the Ramona Bowl Amphitheatre for decades.

To donate please go to www.RamonaBowl.com or call 951-658-3111.

LOOKING AHEAD

The cast from this year's show were rehearsed and ready. They are so very disappointed we had to cancel but are looking forward to entertaining you next year.

During the time we are closed we will continue the improvements to our Bowl which had begun earlier this year, restoring our Milford Zornes Fresco, remodeling our museum, and building a new gift shop. These improvements were made possible by a generous anonymous donation.

STAYING STRONG

Since our first performance season in 1923 our nation has experienced numerous wars, a great depression, many recessions, and other events that have challenged our lives and shaped our country. This pandemic will again challenge the whole nation. As we work through supporting each other to stay safe and well we are confident that we will all come back and rise together.

YOU CAN HELP

Ramona is our primary event at the Ramona Bowl and sustains us all year long. The Directors are hoping those who have enjoyed the play and the Bowl itself will consider making a donation to offset the tremendous loss of these performances.




CAST AND CREW: *The Ramona cast and crew was rehearsed and ready to go this year, but are looking forward to returning next year.*

// We have a much appreciated offer from a donor to match dollar for net dollar any donations that we receive. //

We have a much appreciated offer from a donor to match dollar for net dollar any donations that we receive. We would sincerely appreciate if you would consider helping us continue this valued California Treasure and Tradition.

RETURNING NEXT YEAR

Please join us at our next year's performances which will be April 17 & 18, April 24 & 25 and May 1 & 2, 2021. 



LEGENDARY PERFORMERS FOR LEGENDARY ROLES:

A number of famous stars have played in Ramona, including (left) Frank Sorrell and Anne Archer (1969), Maurice Jara and Raquel Welch (1959), and Jean Innes and Victor Jory (1930s).

To donate please go to www.RamonaBowl.com or call 951-658-3111.

THEATRE & ARTS EVENT GUIDE

Send your events to ier@inlandreview.com or go online to www.inlandreview.com.

In response to the COVID-19 outbreak, festivals and venues across the Inland Empire have been temporarily closed down. CHECK WITH INDIVIDUAL VENUES USING THE CONTACT INFORMATION BELOW FOR NEWS AND UPDATES OR GO ONLINE TO WWW.INLANDREVIEW.COM.

MANY EVENTS AND VENUES ARE SEEKING SUPPORT TO HELP FUND THEIR OPERATIONS AND EMPLOYEES THROUGH THIS DIFFICULT TIME. IF YOU ARE ABLE, AND WOULD LIKE TO DONATE, PLEASE CHECK THEIR WEBSITES FOR INFORMATION.

Get your event listed in the



"What To Do" Section

If you have an upcoming event that you would like to see listed in these pages, please send the following information:

- Name of the event
- Date and time
- City, location and address
- A contact phone number
- Name of the person submitting the event

Send it by:

EMAIL: IER@InlandReview.com

MAIL: Inland Entertainment Review
c/o Word Mill Publishing
5055 Canyon Crest Dr.
Riverside, CA 92507

WEB: Online at InlandReview.com and send us an email from the "Contact Us" form.

Inland Entertainment Review reserves the right to publish or withhold any material sent. Materials mailed will not be returned.

AGUA CALIENTE CASINO PALM SPRINGS

(888) 999-1995.
www.sparesortcasino.com.
401 East Amado Rd., Palm Springs.
CLOSED AT LEAST UNTIL APRIL 12.

AGUA CALIENTE RESORT CASINO RANCHO MIRAGE

(866) 858-3600.
www.hotwatercasino.com.
32-250 Bob Hope Drive,
Rancho Mirage.
CLOSED AT LEAST UNTIL APRIL 12.

ART DEPOT GALLERY

In the Helen Putnam Historical Plaza, in downtown Fontana. Visual arts programs, gallery exhibits and events. 16822 Spring St., (909) 349-6900. arts.fontana.org.

BRIDGES AUDITORIUM

Pomona College, 450 North College Way, Claremont. www.pomona.edu/administration/bridges-auditorium.
ALL EVENTS CANCELED OR POSTPONED UNTIL THE FALL.

CAL BAPTIST UNIVERSITY THEATRE

At the Wallace Theatre on the Cal Baptist campus in Riverside, www.calbaptist.edu/theatre. Box office: (951) 343-4319.

CALIFORNIA STATE UNIVERSITY SAN BERNARDINO DEPARTMENT OF THEATRE ARTS

(909) 537-5884. theatre.csusb.edu.
LOVE LETTERS: Postponed to the Fall.

CAL STATE UNIVERSITY SAN BERNARDINO ROBERT AND FRANCES FULLERTON MUSEUM OF ART

A nationally recognized museum accredited by the American Alliance of Museums. General admission is free. Suggested donation \$3. Parking is \$6 per vehicle and \$3 on weekends. The museum is open Mon. – Wed. and Sat. 10am-5pm, Thurs. noon – 8pm and closed Fri. and Sun. (909) 537-7373. raffma.csusb.edu.
CLOSED UNTIL FURTHER NOTICE.

CANDLELIGHT PAVILION

455 West Foothill Boulevard, Claremont. (909) 626-1254 ext.1. candlelightpavilion.com.
CLOSED UNTIL FURTHER NOTICE.

CHAFFEY COLLEGE THEATRE

Tickets available at www.chaffey.edu/theatre_tickets.

CHINO COMMUNITY THEATRE

Performances held at the Seventh Street Community Theater, 13123 7th Street, in Chino. Tickets are available through the box office at (909) 590-1149 or online at www.chinocommunitytheatre.org.
UPCOMING PRODUCTIONS HAVE BEEN POSTPONED UNTIL FURTHER NOTICE.

COACHELLA VALLEY REPERTORY THEATRE

The CVRep Theatre is located in the Atrium 69-930 Highway 111 in Rancho Mirage. To order tickets or for more information, call (760) 296-2966 or visit cvrep.org.
CLOSED UNTIL FURTHER NOTICE.

FALLBROOK ART CENTER

Sculpture, painting, printmaking, wildlife, glass, ceramic, and photography fine art shows. 103 S. Main St., Fallbrook. fallbrookartcenter.org. (760) 728-1414.
CLOSED UNTIL AT LEAST APRIL 19.

FANTASY SPRINGS RESORT CASINO

For tickets and information, call (760) 342-5000, (800) 827-2946 or visit fantasyspringsresort.com.
CLOSED UNTIL FURTHER NOTICE.

FONTANA COMMUNITY SENIOR CENTER ART GALLERY

The art gallery is located on the Center's upper level in the Library and Art Gallery Corridor, 16710 Ceres Ave., in Fontana. (909) 349-6975. arts.fontana.org.

FOX PERFORMING ARTS CENTER

In Downtown Riverside, 3801 Mission Inn Ave. Tickets are available at the Fox Box Office, LiveNation.com, ticketmaster.com, or charge by phone at (951) 779-9800. For information, visit venue.riversidepac.com.
AN EVENING WITH THE MONKEES: Postponed.

#UNDEPORTABLES COMEDY SHOW WITH MOMO RODRIGUEZ: Postponed.

UP IN SMOKE - MOVIE EXPERIENCE: Canceled.

AN AMERICAN IN PARIS: May 6.

KATE DEL CASTILLO - ESTOY OKATE: Canceled.

THE ESSENCE OF WHITNEY: May 9. Postponed.

GREASE SING-A-LONG: May 10.
PAW PATROL LIVE! RACE TO THE RESCUE: Canceled.

HISTORIC HEMET THEATRE

www.HistoricHemetTheatre.com. Ticket Office Monday through Friday, 11am to 6pm. (951) 658-5950. 216 E Florida Ave, Hemet.
TRIBUTE TO METALLICA FEATURING MASTERS OF PUPPETS: Canceled.
TRIBUTE TO ABBA: Canceled.
CLOSED UNTIL AT LEAST APRIL 13.

HONDA CENTER

2695 E. Katella Ave., Anaheim. www.hondacenter.com.
FIRST LADY MICHELLE OBAMA: Postponed.
MTV WILD 'N OUT LIVE: Postponed.
GEORGE LOPEZ: Rescheduled to Aug. 22.
OZUNA: Postponed.
MICHAEL BUBLÉ: Postponed.

LEWIS FAMILY PLAYHOUSE

12505 Cultural Center Dr., Rancho Cucamonga. Tickets available at lewisfamilyplayhouse.com, (909) 477-2752.
SISTER ACT: Canceled.
MUMMENSCHANZ "YOU & ME": Canceled.
INLAND PACIFIC BALLET'S THE LITTLE MERMAID: Canceled.
THE MIRACULOUS JOURNEY OF EDWARD TULANE: Canceled.
MATILDA: Canceled.
See article on page 15.

THEATRE & ARTS EVENT GUIDE

Send your events to ier@inlandreview.com or go online to www.inlandreview.com.**MCCALLUM THEATRE**

www.mccallumtheatre.com.
(760) 340-2787.

CLOSED UNTIL AT LEAST APRIL 30.**MORONGO CASINO**

(800) 252-4499.
morongocasinosort.com.
49750 Seminole Dr., Cabazon.

CLOSED UNTIL AT LEAST APRIL 12.**OLD TOWN TEMECULA
COMMUNITY THEATER**

42051 Main St., Temecula.
(866) 653-8696.

www.temeculatheater.com.**SALES ON MOST EVENTS THROUGH
APRIL HAVE BEEN STOPPED AT
THIS TIME.**

PALA
CASINO

PALA CASINO RESORT SPA

Box Office (877) 946-7252
Palacasinocom
11154 Hwy 76, Pala, CA 92059
(760) 510-5100

CLOSED UNTIL FURTHER NOTICE.*See article on page 15.***PALM SPRINGS ART MUSEUM /
ANNENBERG THEATER**

Box Office: (760) 325-4490.

www.psmuseum.org
101 Museum Drive, Palm Springs.

CLOSED UNTIL FURTHER NOTICE.**PECHANGA RESORT & CASINO**

(951) 693-1819.

pechanga.com.
45000 Pala Road, Temecula.

Box Office (951) 303-2507.

CLOSED UNTIL FURTHER NOTICE.**RAMONA****CANCELED***See article on page 18.***REDLANDS SYMPHONY**

(909) 587-5565

redlandssymphony.com.**BRAHMS: PASSION &
TENDERNESS:** Postponed.**CLOSED UNTIL AT LEAST APRIL 6.****RIVERSIDE ART MUSEUM**

3425 Mission Inn Ave., Riverside.

(951) 684-7111.

riversideartmuseum.org.**RIVERSIDE COMMUNITY PLAYERS**

4026 14th St., in Riverside.

(951) 686-4030.

riversidecommunityplayers.com.**CHECK WEBSITE FOR
RESCHEDULED PERFORMANCES.***See article on page 16.***RIVERSIDE MUNICIPAL
AUDITORIUM**

3485 Mission Inn Ave., Riverside.

(951) 779-9800.

venue.riversiderma.com.**KEEP IT LOUD FEST:** Canceled.**ONE DROP REDEMPTION -
TRIBUTE TO BOB MARLEY:**
Canceled.**DJ QUIK & TOO \$HORT:** Postponed.**DOS MAS DOS:** Postponed.**FESTIVAL RANCHERO:** Postponed.**NOCHE DE ROCK EN ESPANOL****WITH TRIBUTE TO MANA:** May 1.**COHEED AND CAMBRIA -****NEVERENDER: NFWT WITH****SPECIAL GUESTS CHON:** May 13.**SAN BERNARDINO SYMPHONY**

Historic California Theatre of the
Performing Arts, 562 W. 4th Street,
San Bernardino.

www.sanbernardiniosymphony.org

(909) 381-5388.

FROM STAGE TO SCREEN:

Postponed.

**SAN MANUEL INDIAN BINGO AND
CASINO**

(909) 864-5050.

www.sanmanuel.com
5797 North Victoria Avenue,
Highland.

CLOSED UNTIL AT LEAST APRIL 11.**SOBOBA CASINO**

(951) 665-1000 or (866) 4-SOBOBA.

www.soboba.com.

23333 Soboba Road, San Jacinto.

CLOSED UNTIL AT LEAST APRIL 30.**SPOTLIGHT 29 CASINO**

46-200 Harrison Place, Coachella.

www.spotlight29.com.

(800) 585-3737 or

(760) 775-5566.

CLOSED UNTIL FURTHER NOTICE.**TEMECULA VALLEY SYMPHONY**

(951) 587-1536.

www.TemeculaValleySymphony.org.**THE WINNERS! - STRAUSS,****MAHLER, MUSSORGSKY AND****2020 CONCERTO WINNERS:**

Canceled.

25TH ANNIVERSARY**CELEBRATION:** Postponed.**TIBBIES CENTER STAGE THEATER**

8463 Sierra Ave., Fontana.

(909) 429-7469.

centerstagefontana.com.**CLOSED UNTIL AT LEAST MAY 1.****TOYOTA ARENA**

4000 E. Ontario Center Parkway,

Ontario. www.toyota-arena.com.**LIT AF TOUR HOSTED BY MARTIN****LAWRENCE:** Postponed.**DISNEY ON ICE:** Canceled.**UNIVERSITY OF CALIFORNIA,
RIVERSIDE, DEPARTMENT OF
THEATRE**

900 University Ave. in Riverside.

For schedules and more

information, go online to

theatre.ucr.edu. **IER**

Inland
ENTERTAINMENT
The Inland Empire's Guide to Fun
REVIEW

To advertise, call (951) 686-7575

**Inland Empire events at your
fingertips every month**
**Reach readers across the
Inland Empire**

What To Do

EVENT GUIDE

Send your events to ier@inlandreview.com or go online to www.inlandreview.com.

In response to the COVID-19 outbreak, festivals and venues across the Inland Empire have been temporarily closed down. CHECK WITH INDIVIDUAL VENUES USING THE CONTACT INFORMATION BELOW FOR NEWS AND UPDATES OR GO ONLINE TO WWW.INLANDREVIEW.COM.

MANY EVENTS AND VENUES ARE SEEKING SUPPORT TO HELP FUND THEIR OPERATIONS AND EMPLOYEES THROUGH THIS DIFFICULT TIME. IF YOU ARE ABLE, AND WOULD LIKE TO DONATE, PLEASE CHECK THEIR WEBSITES FOR INFORMATION.

Get your event listed in the



"What To Do" Section

If you have an upcoming event that you would like to see listed in these pages, please send the following information:

- Name of the event
- Date and time
- City, location and address
- A contact phone number
- Name of the person submitting the event

Send it by:

EMAIL: IER@InlandReview.com

MAIL: Inland Entertainment Review
c/o Word Mill Publishing
5055 Canyon Crest Dr.
Riverside, CA 92507

WEB: Online at InlandReview.com and send us an email from the "Contact Us" form.

Inland Entertainment Review reserves the right to publish or withhold any material sent. Materials mailed will not be returned.

CASINOS

AGUA CALIENTE CASINO, PALM SPRINGS
(760) 323-5865.
www.sparesortcasino.com.
401 E. Amado Rd.,
Palm Springs.
CLOSED AT LEAST UNTIL APRIL 12.

AGUA CALIENTE CASINO, RANCHO MIRAGE
(866) 858-3600.
www.hotwatercasino.com.
32-250 Bob Hope Drive,
Rancho Mirage.
CLOSED AT LEAST UNTIL APRIL 12.

AUGUSTINE CASINO
760-391-9500.
www.augustinecasino.com.
84-001 Avenue 54, Coachella.
CLOSED UNTIL FURTHER NOTICE

CAHUILLA CASINO
52702 Highway 371, Anza.
(951) 763-1200.
www.cahuillacasino.com.
CLOSED AT LEAST UNTIL APRIL 12.

FANTASY SPRINGS RESORT CASINO
For tickets and information, call
(760) 342-5000,
(800) 827-2946 or visit
fantasyspringsresort.com.
CLOSED AT LEAST UNTIL APRIL 12.

LAKE ELSINORE CASINO
20930 Malaga Rd., Lake Elsinore.
(951) 674-3101. lircasino.com.
CLOSED AT LEAST UNTIL APRIL 12.

MORONGO CASINO
(800) 252-4499.
morongocasinosort.com.
49750 Seminole Dr., Cabazon.
CLOSED UNTIL AT LEAST APRIL 12.

PALA CASINO

PALA CASINO RESORT SPA
Box Office (877) 946-7252
Palacasino.com
11154 Hwy 76, Pala, CA 92059
(760) 510-5100
CLOSED UNTIL FURTHER NOTICE.
See article on page 15.

PECHANGA RESORT & CASINO
(951) 693-1819.
www.pechanga.com.
45000 Pala Road, Temecula.
Box Office (951) 303-2507.
CLOSED UNTIL FURTHER NOTICE.

SAN MANUEL INDIAN BINGO AND CASINO
(909) 864-5050.
www.sanmanuel.com
5797 North Victoria Avenue,
Highland.
CLOSED UNTIL AT LEAST APRIL 11.

SOBOBA CASINO
(951) 665-1000 or (866) 4-SOBOBA.
www.soboba.com.
23333 Soboba Road, San Jacinto.
CLOSED UNTIL AT LEAST APRIL 30.

SPOTLIGHT 29 CASINO
46-200 Harrison Place, Coachella.
www.spotlight29.com.
(800) 585-3737 or (760) 775-5566.
CLOSED UNTIL FURTHER NOTICE.

FAIRS, FESTIVALS, EVENTS



BLUEGRASS IN THE SPRING
Scheduled for May 9-10 at Calico Ghost Town. Please check their website at parks.sbcounty.gov for updates and possible rescheduling.
See article on page 11.



CALICO GHOST TOWN EASTER CELEBRATION

Scheduled for April 12 at Calico Ghost town in Yermo. Please check their website at parks.sbcounty.gov for updates and information.
See article on page 8.



CANYON CREST TOWNE CENTRE
Shop, dine, relax and enjoy at the Towne Centre, located at 5225 Canyon Crest Dr. in Riverside. (951) 686-1222. www.cctownecentre.com. Outdoor events are weather permitting.
EATERIES OFFERING DELIVERY AND TAKE-OUT: *See article on page 16.*

EVENT GUIDE

Send your events to ier@inlandreview.com or go online to www.inlandreview.com.

CIRCUS VARGAS PERFORMANCES AT THE TEMECULA PROMENADE AND AT ONTARIO MILLS HAVE BEEN POSTPONED.

www.circusvargas.com/

DOWNTOWN FARMERS' MARKET IN RIVERSIDE

Main Street between 5th and 6th Streets, a wide variety of novelty and fresh food, every Saturday in downtown Riverside, 8am to 1pm. www.riversideca.gov.



DOWNTOWN RIVERSIDE

Shows, restaurants, events and more in Downtown Riverside. www.riversidedowntown.org. See article on page 14.



GARDEN GROVE STRAWBERRY FESTIVAL CANCELED

See article on page 15.

HONDA CENTER

2695 E. Katella Ave., Anaheim. www.hondacenter.com.

FIRST LADY MICHELLE OBAMA: Postponed.

THE ANAHEIM DUCKS SEASON HAS BEEN PAUSED.



RAMONA CANCELED

See article on page 18.

TIBBIES CENTER STAGE THEATER

8463 Sierra Ave., Fontana. (909) 429-7469. centerstagefontana.com.

CLOSED UNTIL AT LEAST MAY 1.

TOYOTA ARENA

4000 E. Ontario Center Parkway, Ontario. www.toyota-arena.com.

ONTARIO REIGN: April 4, 8, 11. KING OF THE CAGE ELIMINATOR II: April 5.

TROUT DERBIES AT SAN BERNARDINO COUNTY PARKS CANCELED UNTIL AT LEAST APRIL 30.

See article on page 14.

MOUNTAIN ACTIVITIES



ALPINE SLIDE AT MAGIC MOUNTAIN, BIG BEAR SNOWPLAY, & BIG BEAR SPEEDWAY

Enjoy fun in Big Bear. Bobsled-like ride, go-karts and miniature golf

and more. Alpine Slide at Magic Mountain is located in Big Bear Lake, 800 Wild Rose Lane. Call (909) 866-4626. Also nearby is Big Bear Snow Play, on Big Bear Blvd., (909) 585-0075.

www.alpineslidebigbear.com.

SOARING EAGLE: Dual seated zipline ride flying high over Big Bear's snow-covered forest floor.

CLOSED UNTIL FURTHER NOTICE.

See article on page 9.



BIG BEAR ALPINE ZOO

A wildlife alpine collection of more than 190 animals. Open Mon.-Fri., 10am to 4pm, and Sat. & Sun. 10am to 5pm, weather permitting. (909) 584-1299.

www.bigbearalpinezoo.org.

CLOSED UNTIL FURTHER NOTICE.



BIG BEAR ROPES COURSE

High octane obstacle course towering 35 feet off the ground. 42825 Big Bear Blvd. in Big Bear. (909) 585-0075.

www.bigbearropescourse.com.

CLOSED UNTIL FURTHER NOTICE.

See article on page 4.

LAKE ARROWHEAD VILLAGE

Shopping, dining, and plenty of year-round entertainment and activities for all ages. For more information, go online to www.thelakearrowheadvillage.com.

MUSEUMS

CABOT'S PUEBLO MUSEUM

In Desert Hot Springs. Museum collection includes Native American pottery and baskets, artifacts and other treasures. cabotsmuseum.org. (760) 329-7610.

CLOSED UNTIL FURTHER NOTICE.

EDWARD-DEAN MUSEUM & GARDENS

9401 Oak Glen Rd., Cherry Valley. (951) 845-2626.

www.edward-deanmuseum.org.

CLOSED UNTIL FURTHER NOTICE.

THE HISTORIC SITE OF THE ORIGINAL MCDONALDS/ROUTE 66 MUSEUM

Toys, collectables, photo memorabilia, vintage road signs. Open 10am-5pm daily. 1398 N. E St., San Bernardino. Free admission. (909) 885-6324.

CLOSED UNTIL FURTHER NOTICE.

THE INLAND EMPIRE MILITARY MUSEUM

WWI, WWII, Korea, Vietnam, Gulf, Iraq and Afghanistan wars military memorabilia. Open Sat. and Sun., 10am-5pm, Mon.-Fri. by appointment. 1394 N. E St. in San Bernardino. Free admission.

(909) 885-6324 or (909) 888-0477.

CLOSED UNTIL FURTHER NOTICE.

LINCOLN MEMORIAL SHRINE

In Redlands, museum of Abraham Lincoln and Civil War-era. Open Tuesday-Sunday, 1-5pm, closed on major holidays.

(909) 798-7632.

www.lincolnshrine.org.

CLOSED UNTIL AT LEAST APRIL 30.

PALM SPRINGS AIR MUSEUM

An educational non-profit organization with over 28 flyable planes and interactive exhibits housed in 60,000 square feet of climate-controlled hangars. 745 N. Gene Autry Trail, Palm Springs, (760) 778-6262.

www.PalmSpringsAirMuseum.org.

CLOSED UNTIL FURTHER NOTICE.

EVENT GUIDE

Send your events to ier@inlandreview.com or go online to www.inlandreview.com.



PLANES OF FAME AIR MUSEUM
With more than 150 aircraft, the Museum spans the history of manned flight from the Chanute Hang Glider of 1896 to the Space

Age of Apollo. Open Sunday through Friday 10am to 5pm, Saturday 9am to 5pm. 7000 Merrill Ave., in Chino. (909) 597-3722. www.planesoffame.org. **PLANES OF FAME AIR SHOW: CANCELED**
See article on page 16.

SAN BERNARDINO COUNTY MUSEUM
A regional museum with exhibits and collections in cultural and natural history. 2024 Orange Tree Lane in Redlands.

www.sbcounty.gov/museum/ (909) 307-2669. **CLOSED UNTIL FURTHER NOTICE.**

SOUTHERN CALIFORNIA RAILWAY MUSEUM
Explore the West's largest collection of railway locomotives, passenger and freight cars, streetcars, interurban electric cars, buildings and other artifacts dating from the 1870's. 2201 S. A St., Perris. (951) 943-3020. www.oerm.org. **CLOSED UNTIL FURTHER NOTICE.**

WALLY PARKS NHRA MOTORSPORTS MUSEUM
Open Wednesday - Sunday 10am-5pm. The Museum features over 80 historical race cars from several venues. Racing memorabilia spanning the History of NHRA, specialty exhibits rotate throughout the year. Huge museum gift shop and so much more! (909) 622-2133. 1101 W. McKinley Ave., Pomona, Gate 1, LA County Fairplex. www.nhrmuseum.org. **CLOSED UNTIL FURTHER NOTICE.**

IER

Inland ENTERTAINMENT

The Inland Empire's Guide to Fun

REVIEW



The Inland Empire's Magazine for Things To Do
www.InlandReview.com • (951) 686-7575



The staff at Inland Entertainment Review would like to extend our support and sympathies to everyone in the Inland Empire community, and beyond, suffering from the many impacts of the COVID-19 pandemic.

We'll all get through this together.